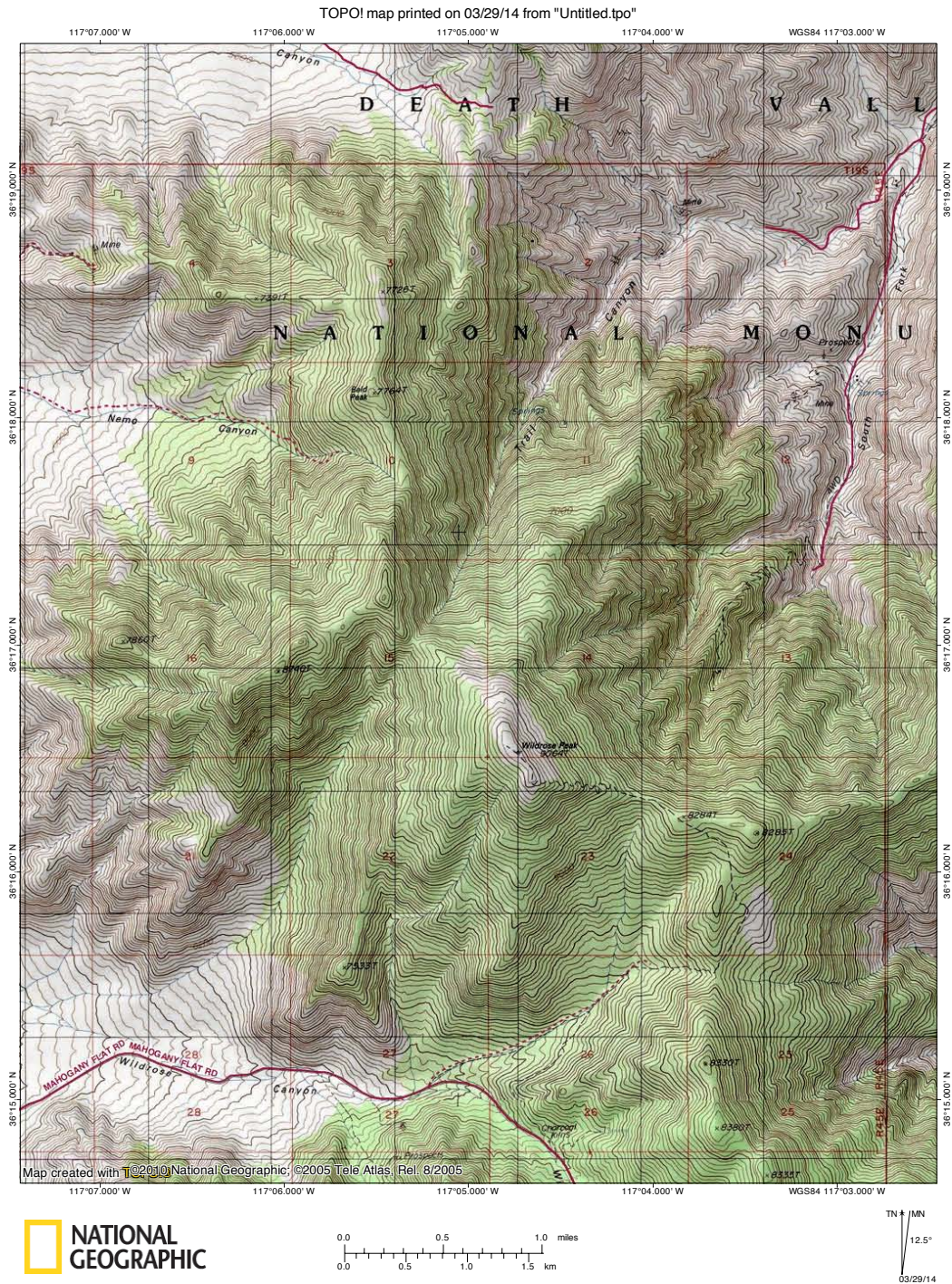


WILDROSE PEAK

The hike to Wildrose Peak is one of the few hikes in Death Valley that has a trail; therefore it is a quite easy hike, requiring no off-trail route-finding and being only 4.2 miles in length.

TOPO map of the trail:



A few wildflowers near the trail as we are starting out on the hike:



Looking down the valley before we round a corner:



Looking ahead to where the trail will go before ascending to the peak:



There are plenty of trees on this part of the hike, with much-appreciated shade in this warm weather:



Looking towards the peak as we start to ascend to the ridge:



A view down the south fork of Trail Canyon once we have reached the ridge:



The trail switchbacks somewhat steeply on the final part of the ascent up to Wildrose Peak, but, although it may seem long, it is not a difficult climb:



Our first glimpse of the actual peak after completing the switchbacks:



The final flat portion of the trail to the peak:



The Wildrose Peak benchmark:



Panorama looking down Trail Canyon and towards Death Valley:



Panorama looking into the Panamint Valley:



Looking towards Rogers Peak, with Bennett and Telescope Peaks just visible behind it:



One final view towards Telescope Peak:



View down the South Fork of Trail Canyon, towards Furnace Creek, from the trail down:



Panorama of the Charcoal Kilns from near the Wildrose Peak trailhead (the kilns are really in a straight line; the distortion is due to the iPhone panorama):



On the way back to Stovepipe Wells we started up the road to Pinyon Mesa and Hummingbird Spring but decided that it was too rough for us to drive too far; it appeared there were sections of pavement on this road, which makes sense as according to Digonnet's *Hiking Death Valley* book the park superintendent's house was located at Pinyon Mesa:

