

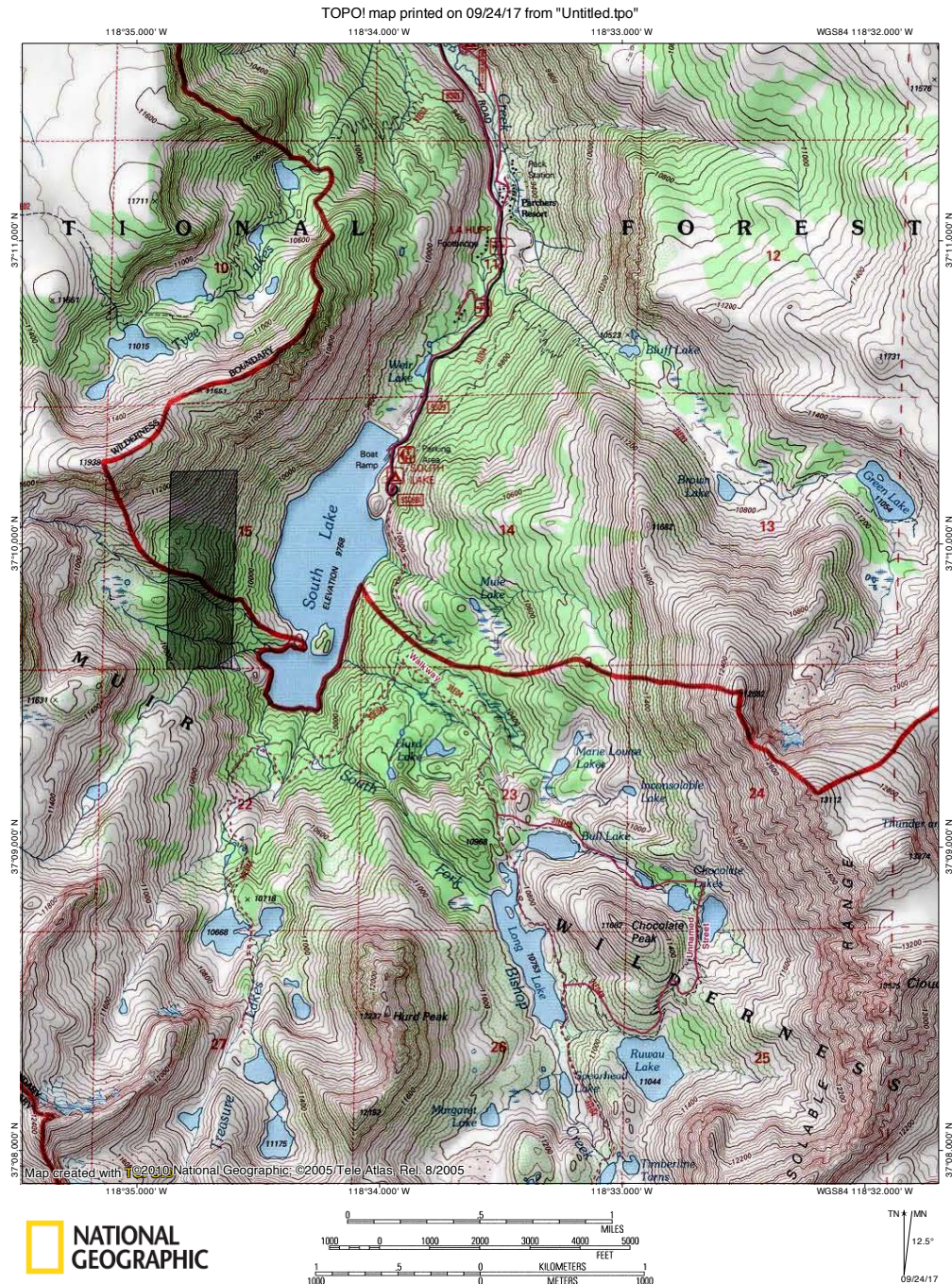
HURD LAKE, SOUTH FORK BISHOP CREEK, CALIFORNIA

Hurd Lake is located near the South Fork of Bishop Creek. We had originally intended to hike to Long Lake, but we were unable to reach this lake because we encountered too much snow on the trail, which made hiking conditions unsafe. I hope to return to this area someday when there is less snow, as there are many lakes here which I would like see (hopefully less snow won't mean more mosquitoes, however!).

On this day, before visiting the Bishop Creek area, we drove the Chalk Bluff Road just north of the town of Bishop, and hiked to the top of the bluffs to get a view of the eastern Sierras.

After our hike near the South Fork of Bishop Creek, we drove to the North Fork of Bishop Creek to see Lake Sabrina. There is also some good hiking in the North Fork. Note that both Lake Sabrina and South Lake are popular for fishing, so finding parking can be difficult.

TOPO map of the trails in the South Lake area, near the South Fork of Bishop Creek.



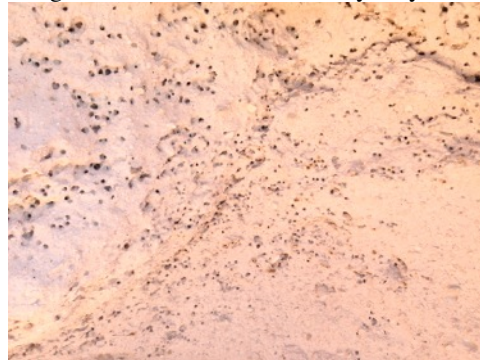
Panorama of the eastern Sierras from a parking area on the Chalk Bluff Road, just north of the town of Bishop.



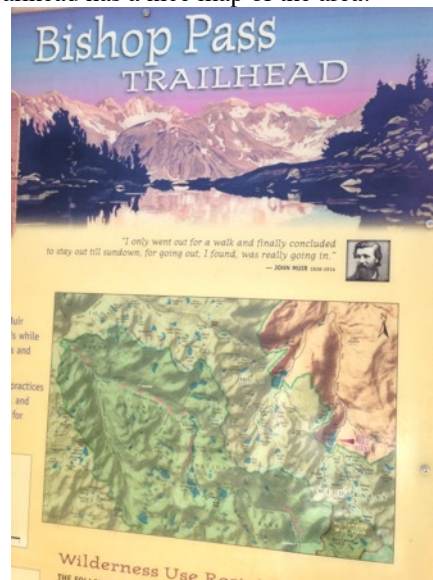
Another panorama, looking towards the Sierras, from atop the Chalk Bluffs.



One of the mud-rocks in this area had these strange holes, which look like they may have been created by bugs.



The trailhead at the South Lake/Bishop Pass trailhead has a nice map of the area.



Looking towards the peaks behind South Lake from the trailhead.



There is a sign at the trailhead warning hikers of black bears.



The trail begins to climb on the eastern side of South Lake. Tyee Lakes, another popular hiking destination in this area, are just over the ridge in the background right of this photo.



The trail briefly enters a patch of trees, providing some welcome shade. Despite there being so much snow on the trail, the June weather while we were here was uncharacteristically hot.



The trail leaves the trees again, and we start to get better views of the peaks which are south of South Lake.



Looking down on the south end of South Lake, with some interesting peaks behind it.



The trail soon switchbacks and starts to climb more steeply. We also begin to encounter small patches of snow.



The small patches of snow alongside the trail here were quite scenic.



At this point, we have lost sight of South Lake and are now hiking in the trees.



This is the fork where hikers can choose to go left to Long Lake or right to the Treasure Lakes (located south of South Lake). Later in the day, we encountered some hikers who informed us that the trail to Treasure Lakes soon became impassible due to a deep stream crossing.



Luckily there weren't a lot of mosquitoes near this small pond alongside the Long Lake trail.



The trail steadily gained elevation, but never felt particularly steep, compared to trails in the Colorado Rockies or the Canadian Rockies.



This tree has grown impressively large despite being so close to this rock.



The trail enters a small meadow and crosses a few small streams. Here we are starting to see more large snow patches.



Soon, we round a corner and lose sight of the trail under this large snowfield. According to another group of hikers who had stopped here, the trail switchbacks up a cliff face which is behind the rock wall seen to the left in this photo. Since this part of the trail was almost entirely under snow, we decided to turn around here.



A short distance back down the trail, we ascended a knoll to the west, which provided excellent views of the surrounding area.



From here, we spotted Hurd Lake (which we didn't actually hike down to).



Panorama looking north (to the left in this photo) and east (right of center in this photo) from here. The major peak seen to the far right in this photo is Hurd Peak.



Looking up this valley towards where Long Lake must be. Notice how there is just enough snow in the wrong places to prevent hikers who are not familiar with snow from continuing.

