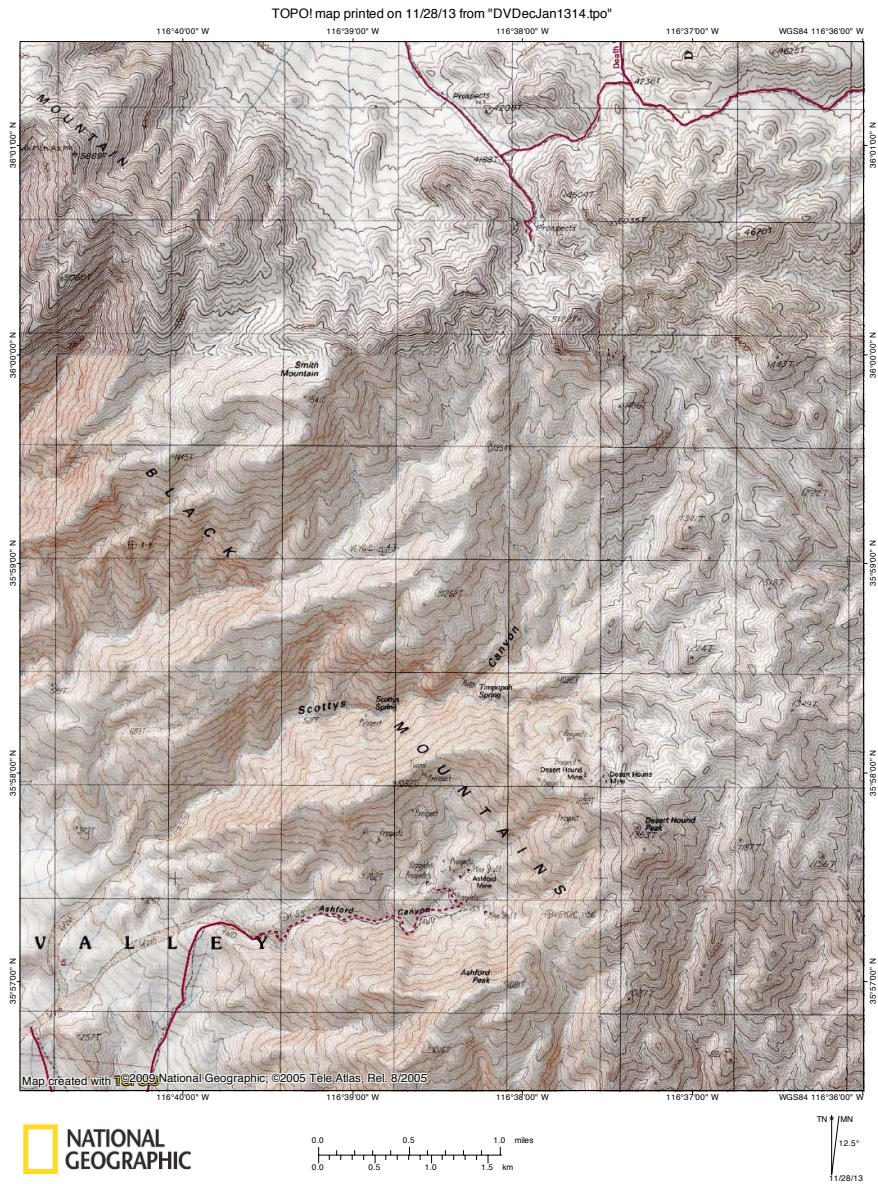


# Upper Scotty's Canyon and Gold Valley Area

TOPO map of this area:



A tight spot in the spur road that heads from the Gold Valley road towards the saddle above Scotty's Canyon:





Nice rock formations in this area:



The route to the ridge above Upper Scotty's Canyon is quite easy to find:



Panorama looking down into Upper Scotty's Canyon from the saddle:



Looking back towards the Gold Valley area from here:





We decided to follow this ridge down to get some views into this canyon and the one just north of it, Blacksmith Canyon:



Panorama of Upper Scotty's and Upper Blacksmith:



Panorama with Smith Mountain on the left and where we hiked up from on the right:



This panorama shows a view into Upper Scotty's and Upper Blacksmith on our way down the ridge:





Upper Scotty's:



Upper Blacksmith:



Panorama of Upper Scotty's:



Looking towards Ashford Peak:





Another panorama of Upper Scotty's and Upper Blacksmith:



One last panorama of Upper Scotty's from where we decided to turn around on the ridge:



From here, we drove down to Upper Willow Creek and did some brief exploring before needing to drive back:

