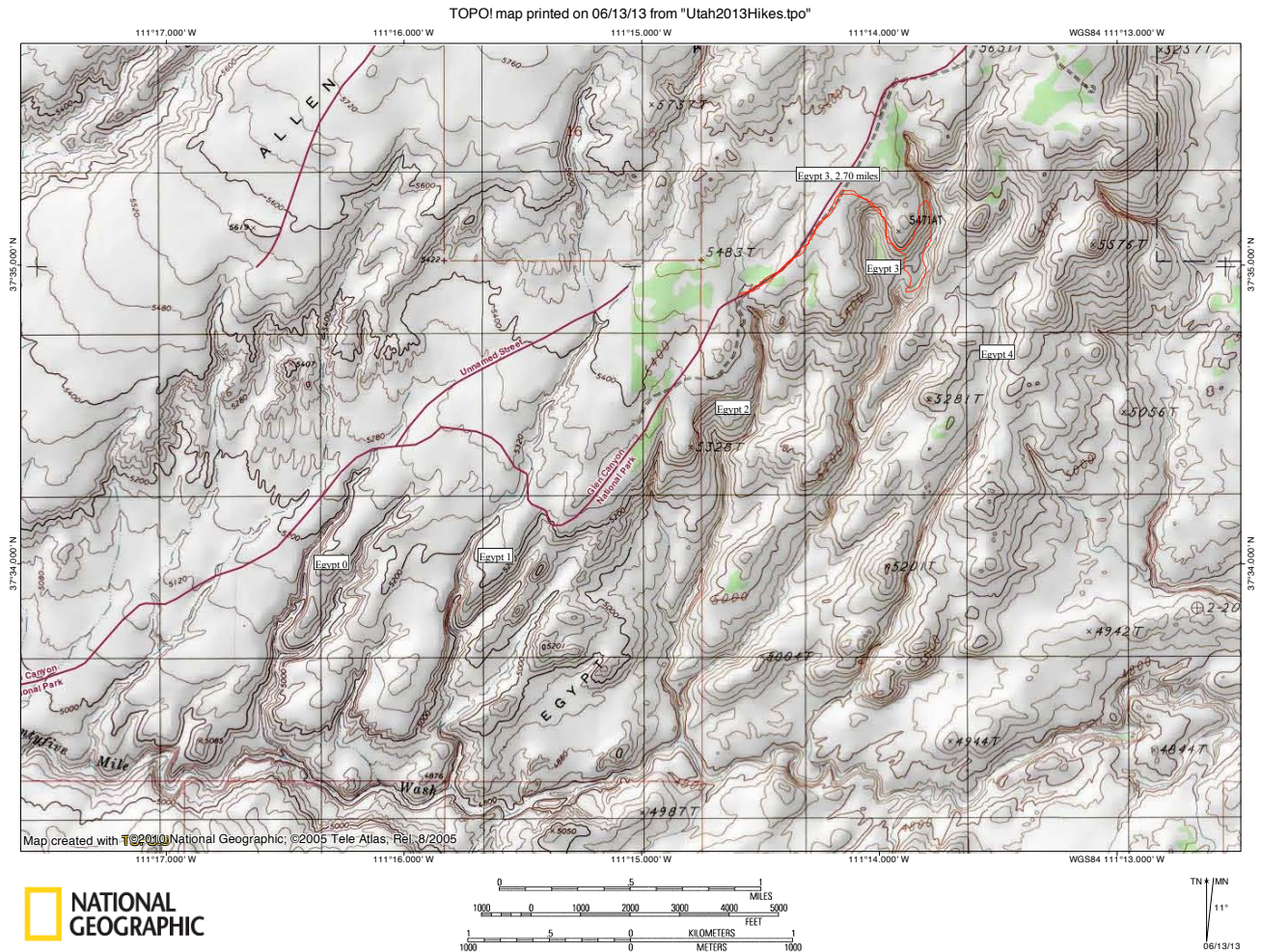


UPPER EGYPT 3 SLOT CANYON IN GRAND STAIRCASE-ESCALANTE NATIONAL MONUMENT

Egypt 3 slot is located on the Egypt Bench Road, about 17 miles down Hole-in-the-Rock Road, then out not quite 10 miles on the Egypt Bench Road. This road is definitely a 4WD/High Clearance road; we stopped at the parking spot for Egypt 2, but there is a difficult spot in the road just past the Egypt 1 parking spot. There are multiple rock "shelves" in the road with sand beneath them. The distance and elevation loss to bypass the impasses in the upper canyon and get to the start of the slot part of this canyon are unclear in the handout from the BLM office, so we did not end up getting to the slot. Note that on a hot day, this is not a straightforward hike!

TOPO map of this hike:



This photo shows one of the “not-so-difficult” parts of the road:



You can just barely see the difficult spot in the road at the top of the photo:



Looking down into Egypt 2 from near where we parked:



The trail takes off from where a metal water pipe goes under the road; it goes to a viewpoint of the large impasse at the top of the west fork of the head of Egypt 3:



Looking down from the top of the impasse:



Looking down from above where the top part of the canyon forks; we went to the left and looked for an easier descent into the canyon (which turned out to be long and hot!), but on the way back we scrambled up the slickrock to the right, which was more difficult but not as long:



This panorama shows the eastern fork of the upper part of the canyon; the slot is very narrow but not very deep:



The route we took down into this slot:



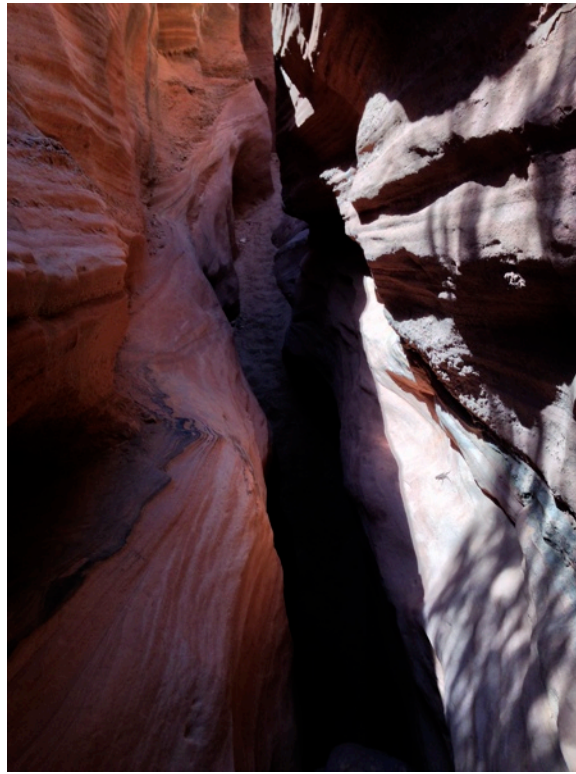
Looking up-canyon once down in the wash:



We followed this slot down to where it joined the main canyon, sometimes walking in the slot and other times on the slickrock. Looking down at a lineup of potholes:



This photo shows one of the deeper sections of the slot:



Panorama of where the two sections of the upper canyon join:



Looking down the main canyon:



As it was getting very hot, and we had not been led to expect quite this far of a distance to the slot by the trip reports we had read, we decided to turn around. Panorama of the route we took up the slickrock back to the car:



We ascended the slickrock in the right-of-middle of the above photo, then followed a ledge to the west until we could ascend from the ledge to the top. This photo shows a boulder pile we climbed up through to get to the top:



On our way back down the Egypt Bench road, we stopped to get a photo looking into upper Egypt 1. This canyon does not have anywhere near as tall of an impasse at the beginning as the other Egypt canyons we saw, but it does not appear to be an easy downclimb due to an overhang:

