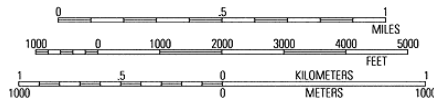
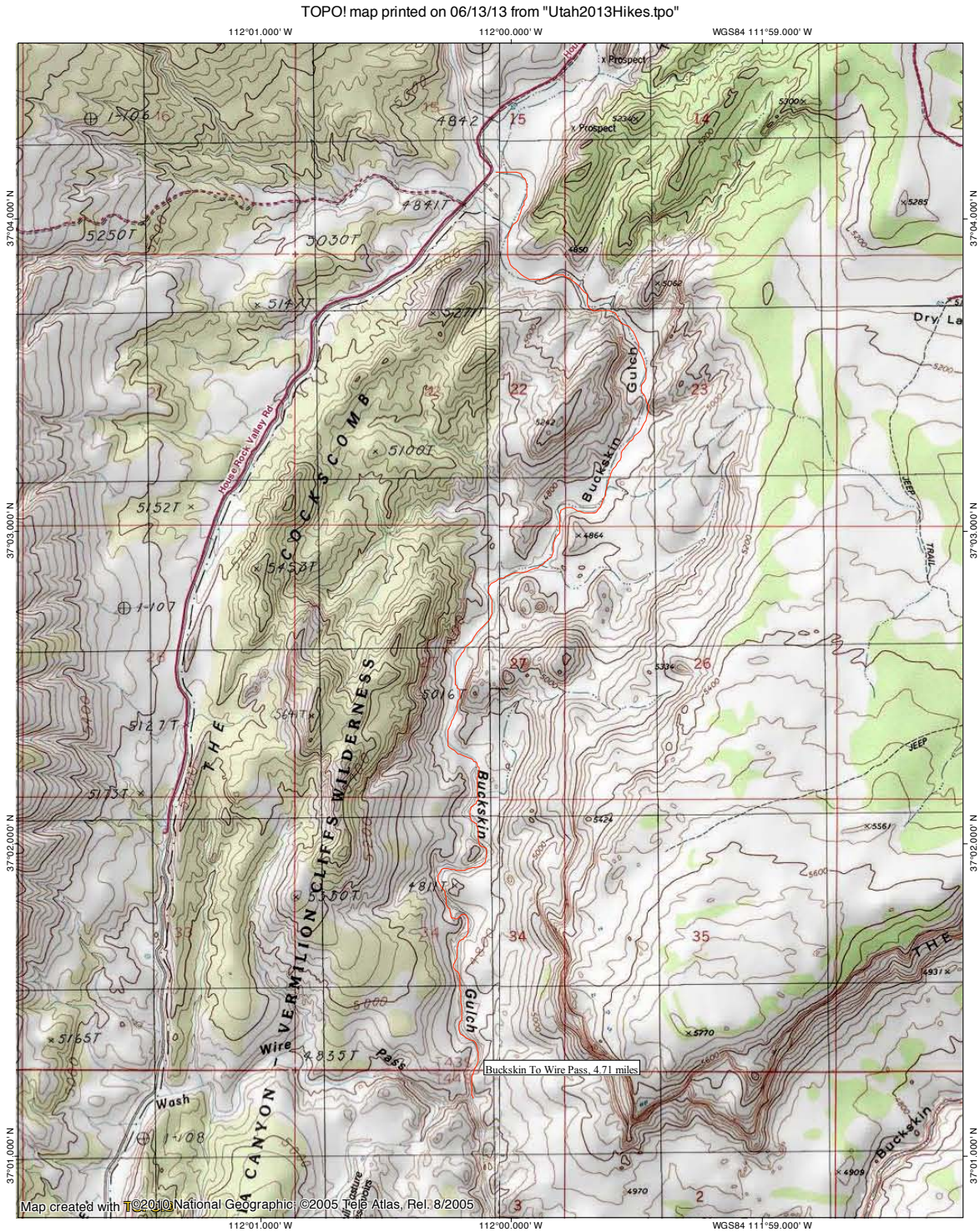


UPPER BUCKSKIN GULCH TO WIRE PASS IN VERMILION CLIFFS NATIONAL MONUMENT

Originally for this hike we had planned to check out some of the rock formations on the east side of the Buckskin Gulch wash, but as it was so hot we opted to hike down the wash to get to the upper Buckskin Gulch slot.

TOPO map of this hike:



The next 4 photos show the hike down the Buckskin wash to the slot:



Panoramas of the amazing nearby rock formations as we continue to head down the wash:





Finally, after a bit longer (and even hotter) of a walk than we had expected, we reached the upper narrows of Buckskin Gulch. The gulch narrows down, then opens up again briefly before finally narrowing down into the famous Buckskin Gulch slot:



The next 9 photos show the incredible narrows of the Upper Buckskin Gulch slot:





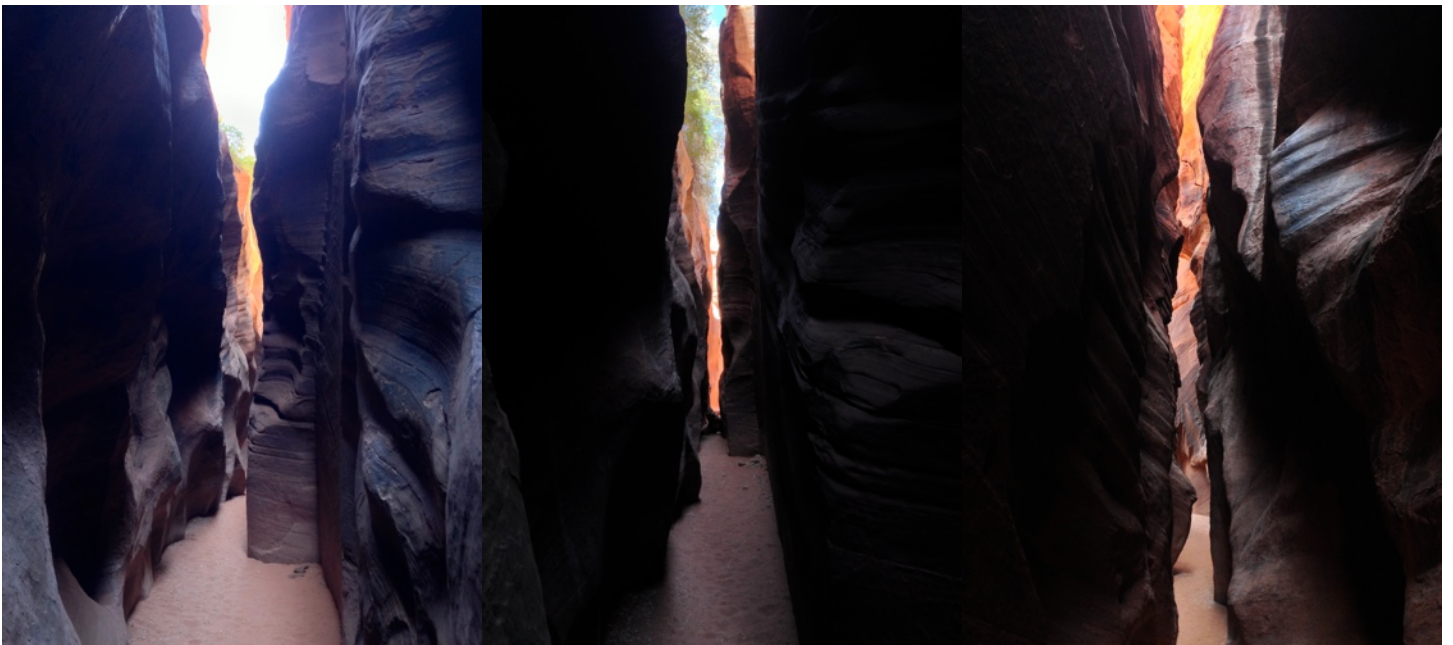
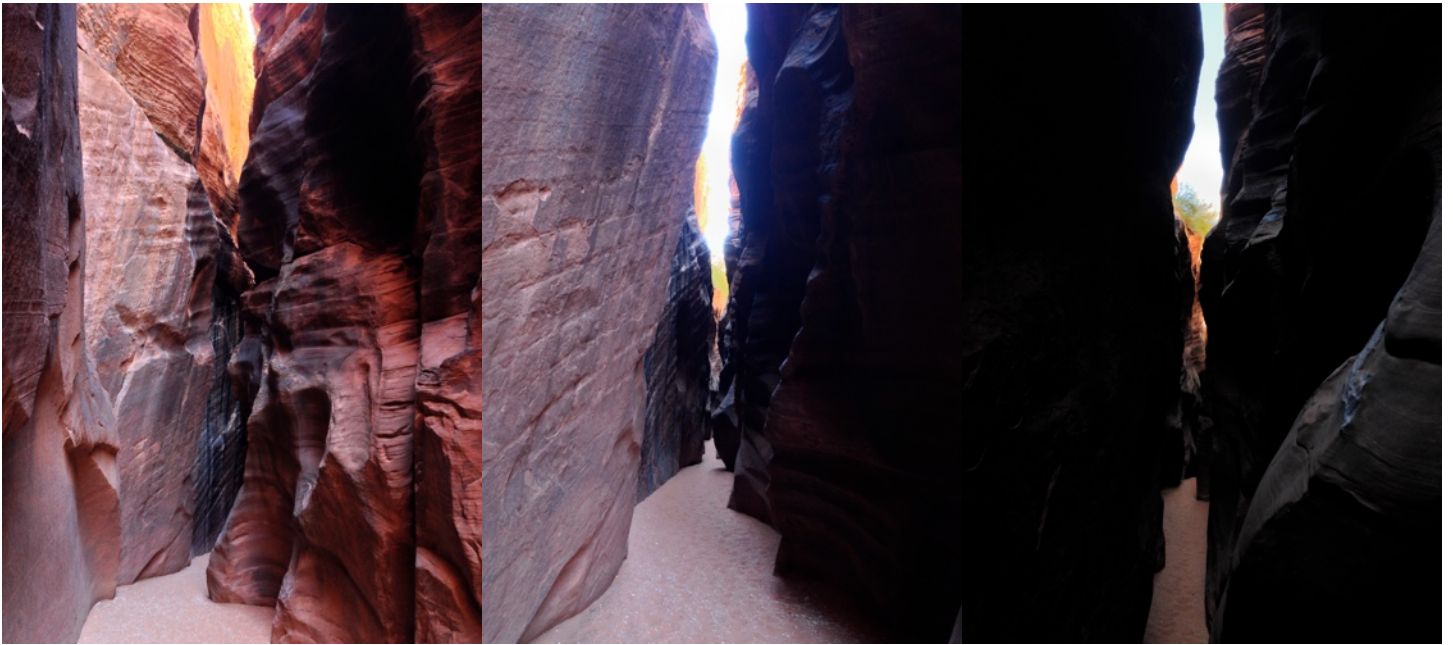
Panorama of where Wire Pass (center of photo) joins Buckskin Gulch:



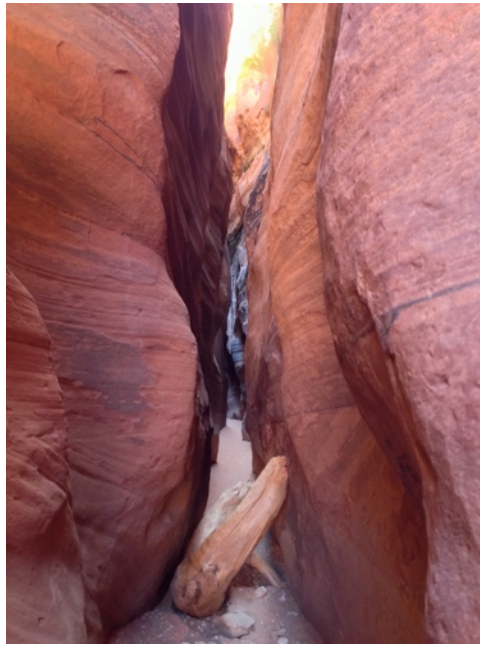
The entrance to Wire Pass; it is an even narrower slot than Buckskin, but it is nowhere near as long:



The next 6 photos show the Wire Pass slot:



Log obstacle in the slot:



We knew from our trip to Buckskin Gulch last year that we had exited the best part of the narrows, so we turned around from here and headed back down to Buckskin:



Looking out at Buckskin Gulch from the entrance to Wire Pass:



An arch high above us on our way back out Upper Buckskin:



More interesting rock formations on our way back up the wash:

