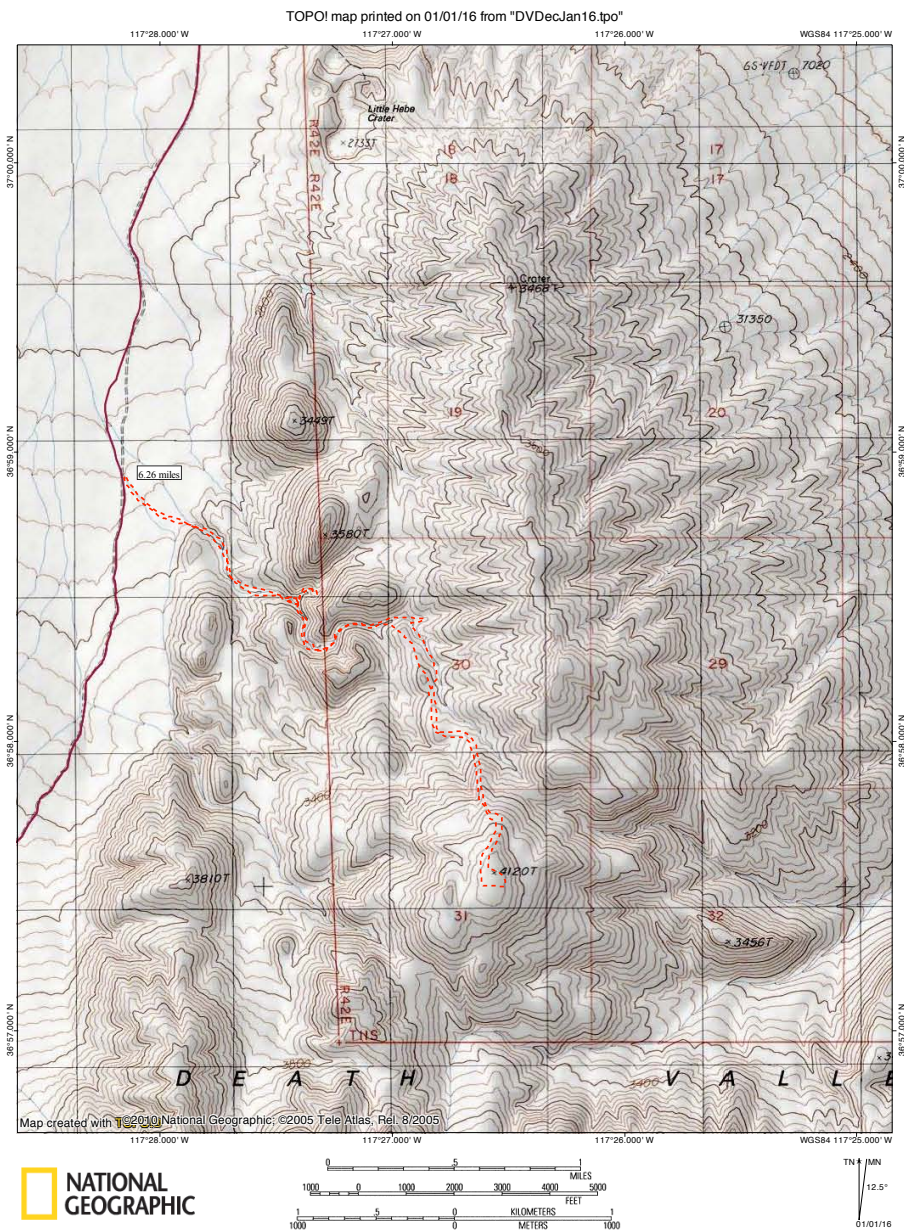


"PEAK 4120" IN THE UBEHEBE CRATER AREA

TOPO map for this hike :



Panorama looking north from where we parked for this hike:



The sun angle looking towards the canyon mouth we were heading to wasn't very good, so better photos of the canyon mouth are at the end of the report, from the hike back:



Shortly after entering the small canyon we were going to follow to get to what I'm referring to as "Peak 4120", we encountered this interesting formation where a small wash joins the main canyon:



Looking through this formation, we could see light coming through from the other side:



So, we climbed up above this formation:



The formation is made of relatively soft rock/mud, so one has to be careful not to disturb it:



There clearly were two formations which water was flowing underneath:



From here, we continued up this nice canyon:



There is a relatively major fork in the wash before reaching the narrow section of the canyon; we took the left fork, as the right fork appeared to have a substantial impasse further along from looking at Google Earth (though this has not yet been confirmed):



There were some spectacular white cliffs to be seen up ahead:



Then, the canyon enters the narrow section which I'd spotted from Google Earth:



Interesting mud formation just before the start of the narrows:



Panorama of the entrance to the narrows; the workaround for the dryfall at the end of the narrows is seen to the left:



The narrows were taller and steeper than I'd expected from looking at maps prior to this hike:



This also made the narrows a lot nicer:



There was a short dryfall in the middle of the narrows, which was about 6 feet tall and easy to climb:



Up ahead, the canyon forks just beyond the relatively major dryfall:



This dryfall appeared to be climbable (I'd estimate it's about 15 feet tall), but we decided it would be safer to check out the potential workaround we had spotted at the entrance to the narrows:



Looking down the narrows from the top of the shorter dryfall:



Looking down into the narrows, and towards the fork in the canyon, from the start of the workaround:



Panorama of the fork in the canyon; note that this part of the workaround is on steep and slippery talus, and is right above the narrow section of the canyon, so extreme caution is required to avoid taking a nasty fall:



Looking down the route back into the canyon:



View down-canyon from the top of the big dryfall:



The left fork, which we explored first, had a small dryfall right away:



The right fork, which we would follow in our route to "Peak 4120", looked to have some nice rock formations:



There were numerous small, easy-to-climb dryfalls in the left fork:



The canyon wound through some narrow sections, though none as long or tall as the previous narrows:



The rock forming the canyon walls was very convoluted:



In this part of the canyon, I expected to encounter a major dryfall, from what I'd seen on Google Earth:



The canyon continued unobstructed further than expected:



But around a bend, we encountered this two-stage dryfall (the first stage is about 15 feet tall, and the second stage is about 12 feet tall and just out of view). The first stage was slippery but climbable, whereas the second stage was quite crumbly. I decided not to climb the second stage, as from Google Earth the canyon appeared to be open and flat beyond that point:



So, we headed back down-canyon to continue up the right fork, which appeared to have no major dryfalls from looking at the Google Earth imagery (this is indeed correct):



The rock walls in this part of the canyon were very interesting:



The canyon did pass through a few narrow sections, some as nice though not as long as the first section of narrows, before the fork:



There was one really impressive bend in the canyon:



Luckily we had a good sun angle for photography during this part of the hike:



Up ahead we are about to enter another nice section of narrows:



The rock forming the narrows in this canyon makes them different from many of the narrow canyons I've hiked in Death Valley:



I was pleasantly surprised by how many nice stretches of narrows were in this canyon:

