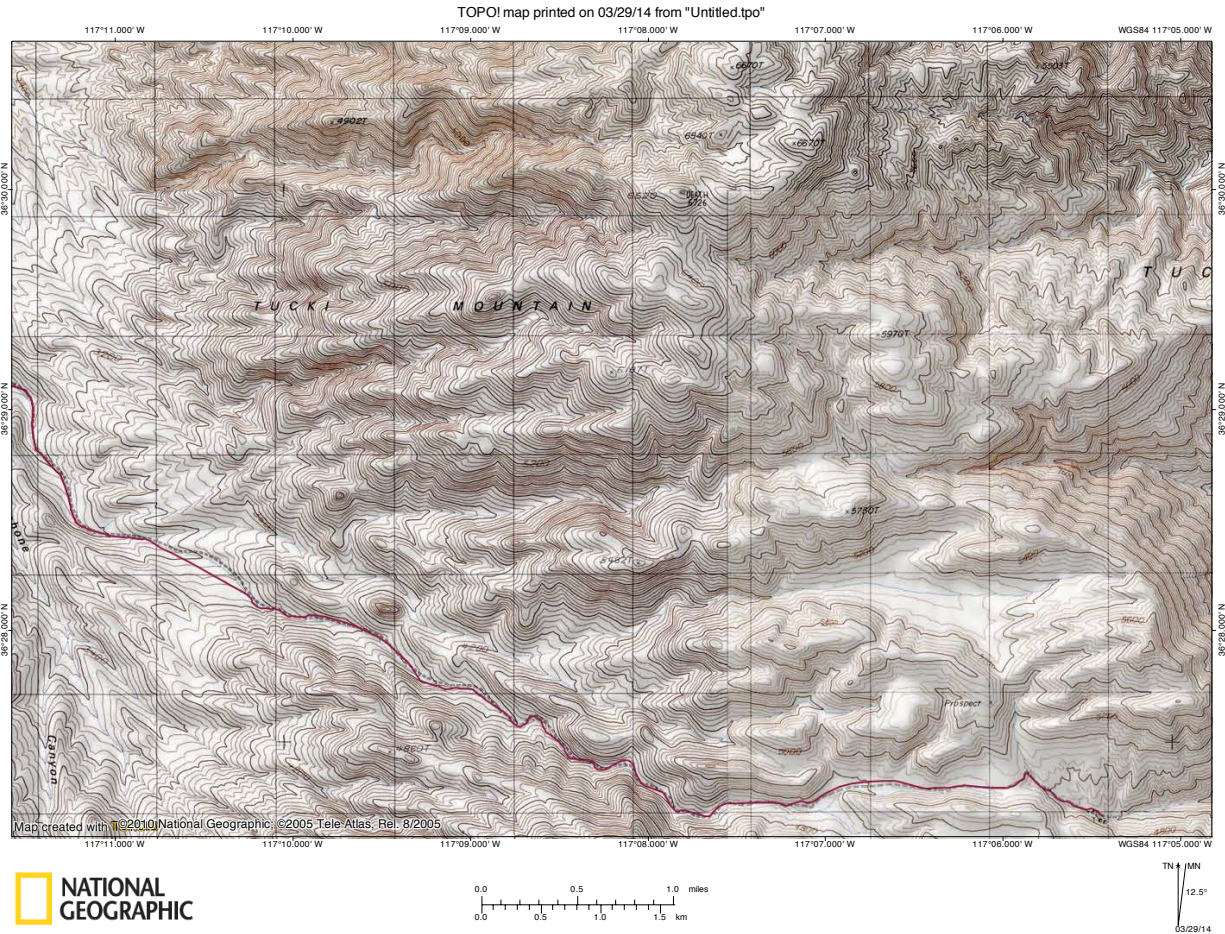


TUCKI MOUNTAIN HIKE START/RECONNAISSANCE

On the day after our hike to Ubehebe Peak, we decided to check out the Tucki Mountain route. As the Tucki Mine Road (Telephone Canyon Road) turned out to be in substantially worse shape than it was in our last trip out there (in April 2011), it took us longer to drive out there than we had planned. So, we started the hike with the intent of getting some good views from whatever high point looked most interesting on our hike.

Map of this area:



The first bad stretch on the road; on previous trips there had been no rock showing here:



One can drive up the road seen in this photo, but we decided to park here and hike it instead:



Not sure what this rusted object near the road is:



Looking back down from near the first high point on the hike up to the ridge:



This appeared to be a mine shaft far below us:



We veered off the road to a small saddle to the right, in hopes of lessening the necessary elevation change; however, by not walking on the road, we were much more concerned about encountering snakes, hence it didn't really save us any time:



Looking back out towards the Tucki Mine area from this saddle:



There were a lot of these strange grooves in the ground through here; I'm not exactly sure what caused them:



Looking across this flat area towards the Martin Cabin:



We rejoined the old road and followed it towards the next ridge:



The road continued further than we expected, so we followed it longer than we should have, until it ended:



Then, we attained the ridge:



From the ridge, we saw that we needed to head essentially back in the direction we had come, but along the ridge:



Panorama looking back down towards the first ridge:



Looking back at the old road now from further along this second ridge:



From here we could see that we would need to drop into this wash, so we decided to instead continue along the ridge we were on to try to get some better views into the main part of the valley:



The canyon draining into the valley from this other side of the ridge looks like it is definitely worth exploring:



We soon reached the highest point on this ridge and could see that we would get good views towards the Cottonwoods from a little further on (and we could already see some snow-capped mountains far in the distance):



Panorama looking towards the Tucki summit and possible routes up to it:



Looking back towards the Old Martin Crossing:



As we followed the ridge, we started to get increasingly good views:



We could also see what appeared to be part of the Skidoo road off to the west:



Panorama along the ridge we were following (in the center), with Tucki off to the right:



Looking down at the Martin Cabin, which can just barely be seen far below:



There were lots of these uplifted rock formations through here:



Finally, we could get a view looking down this wash towards the Cottonwoods:



Nice panorama of the view from here:



Looking towards the route up Tucki:



Looking over towards Telescope Peak:



Another panorama of the surprisingly good view we had from here:



We had seen many horned toads (and no snakes) up until now; this lizard seemed to be interested in posing for the camera:



There were also many of these paintbrush flowers at this higher elevation, so we often stopped to take photos of them:



On our way back, we chose to head straight for the road rather than loop back around the long way that we had come up (and this turned out to be much faster):



The Old Martin Crossing sign, with the Martin Cabin just barely visible in the distance:



Panorama of the ridge we had been hiking on, with the high point seen in the middle of the photo:



It's hard to believe that this stretch of road was once drivable:



Looking back down the not-so-steep part of this road:



This is supposedly a winching cable for getting vehicles back up this road (it's not at all surprising that this would be necessary):



There seem to be a lot of huge barrel cacti in this part of the park:



Looking back at the ridge we were on, and at Tucki Summit far in the distance:



View into the valley from the high point of this road:



There were quite a few of these little purple flowers around here:



We also spotted this friendly horned toad; although we had seen many of them on this hike, this one seemed to be very interested in the camera:



Panorama looking down towards where we had parked:



On the drive back down Telephone Canyon, we tried to spot which wash we would have come out at had we continued following the ridge we had been on down into the nearby wash; I think this is the correct wash:



There were many of these paintbrush flowers alongside, and sometimes in, the road:





This is looking down the 4th rough spot in the road (it's worse than it looks in the photo; compared to many roads in DV and the surrounding area it isn't too bad, but it still requires a bit of care and the right vehicle). Back in April 2011 and our trips out here prior to that, this was the only rough spot, and it was no worse than the 2nd or 3rd rough spots that we encountered on this more recent trip (which were nonexistent on our trips then):

