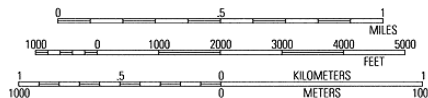
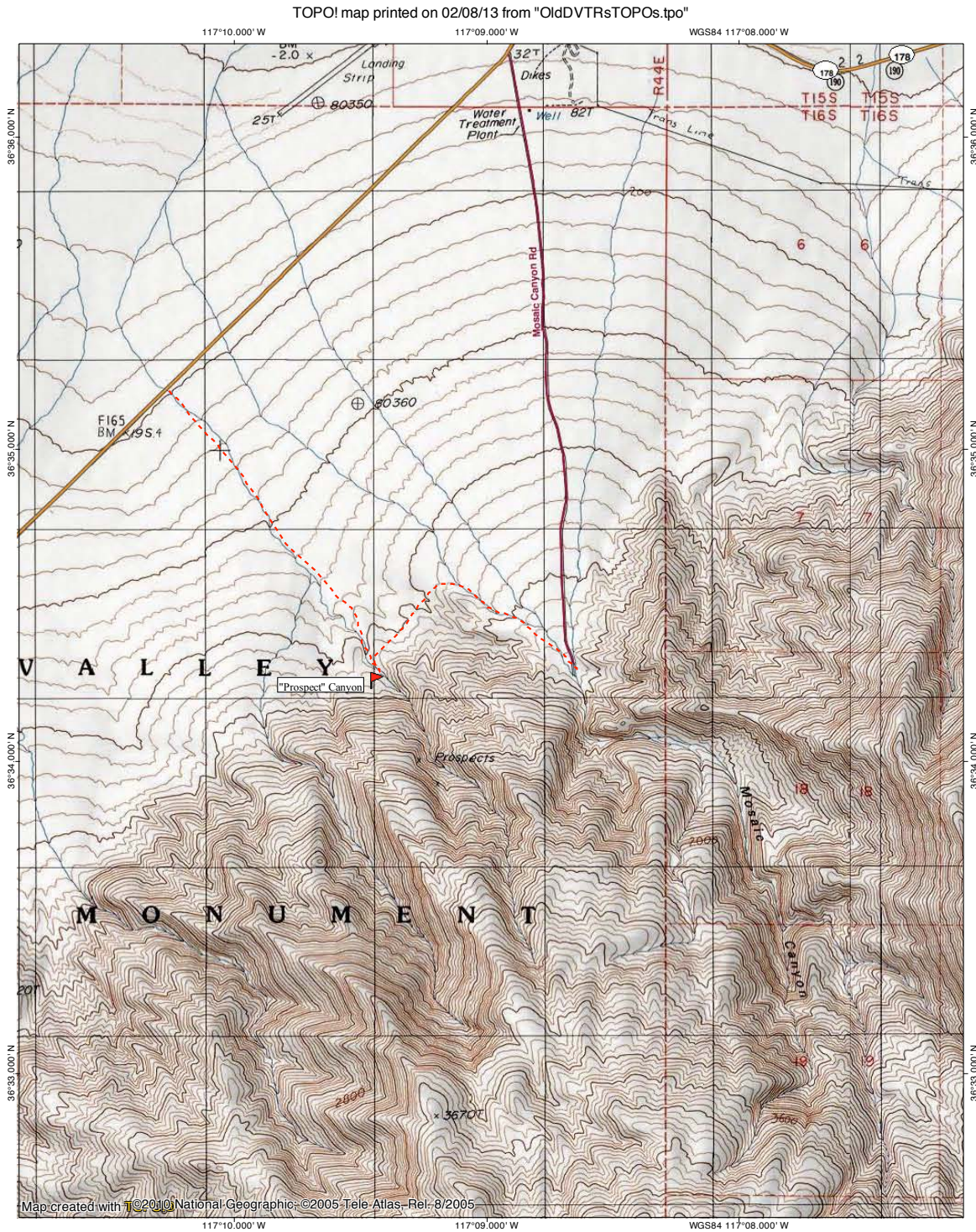


## “PROSPECT” CANYON

I'm calling this canyon “Prospect” Canyon since there are a few marked prospects on the TOPO map of this canyon, as can be seen below. The route we took to the canyon mouth is the route marked from Mosaic Canyon; however, hiking up from the main road might be advisable, as we had some up-and-down hiking to get to the canyon mouth. It is only about 1/4 mile longer to hike from the road to the mouth of the canyon (1 mile versus 1.25 miles):



We encountered what appeared to be a well of some sort on our way to the canyon mouth from the Mosaic Canyon parking lot; it is between some mounds so it is not obvious from a distance:



We also encountered quite a few tall cairns, like the one pictured below, between the Mosaic Canyon parking lot and the mouth of Prospect Canyon



Prospect Canyon is a fairly steep canyon with many boulders and easy-to-climb dryfalls; some of the dryfalls had puddles of water at the bottom which needed to be circumnavigated:



This is a typical view of the canyon, from a bypass of one of the more difficult dryfalls:



Looking back out at the valley from somewhere far up the canyon:



This is one of the more difficult impasses which must be climbed; it is steeper than it looks in the picture:



As the canyon was getting increasingly steep, we decided to turn around. This photo shows the steepness of the upper canyon; note that we did not encounter any sign of prospects in the canyon:

