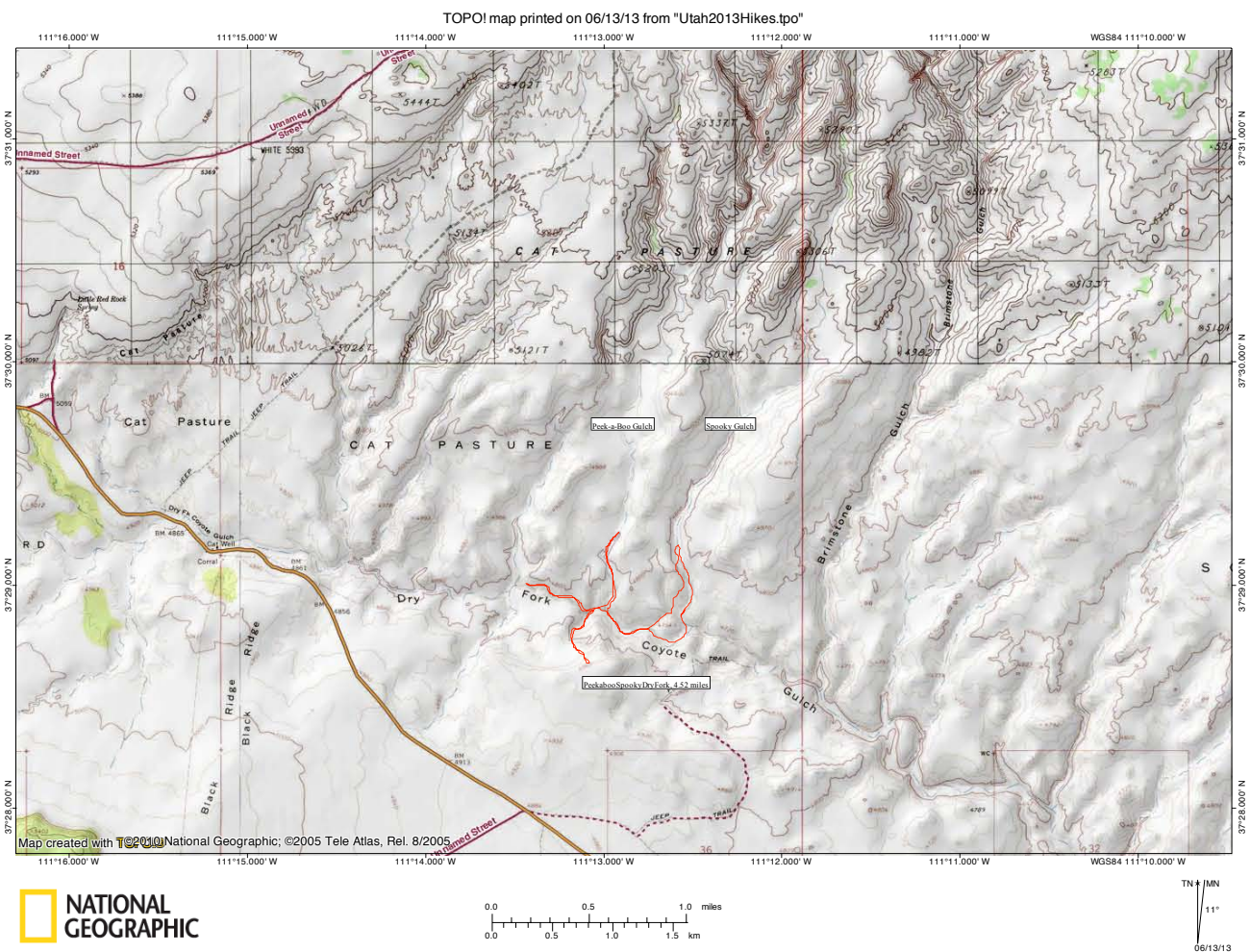


PEEK-A-BOO, SPOOKY, AND DRY FORK SLOT CANYONS AND DEVIL'S GARDEN, IN GRAND STAIRCASE-ESCALANTE NATIONAL MONUMENT

Peek-a-Boo, Spooky, and Dry Fork slot canyons are located about 26 miles down the Hole-in-the-Rock road, then out the road to the Dry Fork Trailhead about 2 miles. Peek-a-Boo and Spooky are some of the best slot canyons, if not the best, on the Hole-in-the-Rock road, because of their narrow and convoluted nature. Dry Fork slot is also a very nice slot, to me somewhat reminiscent of Buckskin Gulch in appearance, though of course not in length. Unfortunately, I was not able to fully explore Spooky and Dry Fork, due to rattlesnakes in both canyons. When squeezing through a tight passage while exploring Spooky, I rounded a corner and spotted a rattlesnake in a sandy niche on the canyon floor. The snake looked unhealthy, and he likely had fallen into the canyon from above. I decided that, as the canyon was still very narrow near the snake, that the safest choice would be to exit the slot canyon and check out the upper end of the canyon by bypassing the entire narrow stretch. We hiked down into the slot canyon from the top, but stopped at the large boulder pile that is located in an open area of the slot as I would not be able to see where I was putting my hands on the climb down, and I was concerned about encountering another snake. We decided not to search for Brimstone slot, as I had read that this canyon is very likely to have rattlesnakes. When hiking up Dry Fork later in the day, we encountered a raven in the canyon that appeared unable to fly. We attempted to walk around the raven, but the raven appeared to try to lunge towards us, so we turned around. After exiting the slot, another hiking group asked us if we saw the rattlesnake further up canyon which was very aggressive and would not allow hikers to pass, which gave a likely explanation as to what had happened to the raven.

TOPO map of this hike:



Panorama looking down towards the slot canyons from the Dry Fork Trailhead parking lot; from this view, it seems unlikely to me that there are so many deep and narrow slots in this area, but there are:



The entrance to Peek-a-Boo has a dryfall, but because of the moki steps it was quite easy for me to climb:



After climbing the impasse, we immediately saw Peek-a-Boo's famous double bridge:



There are multiple sandstone chutes to climb in this canyon, but they were easier to climb than they appeared:



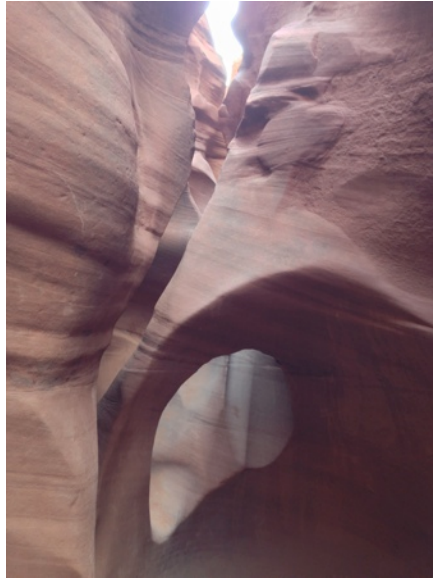
Peek-a-Boo's third bridge can be crawled through or "bypassed" on the left side:



Looking ahead from to the left of the bridge:



The fourth bridge must be climbed through:



Then, there is a short up-climb:



Continuing up-canyon, it remains narrow and convoluted:



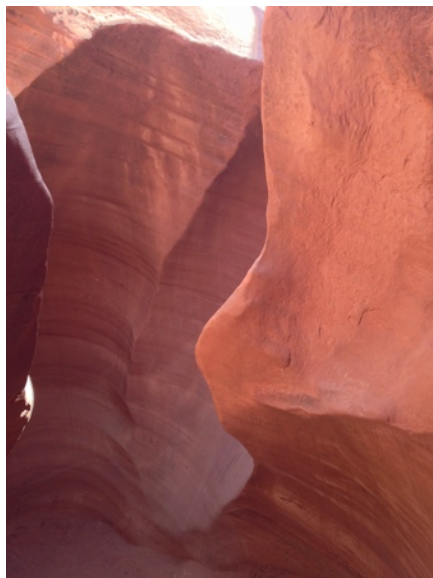
However, Peek-a-Boo is not an exceptionally deep slot:



More photos of the slot:



Another easy dryfall in Peek-a-Boo:



Eventually, but all too soon, the walls start getting shorter and the canyon starts getting less narrow:



When the canyon started to open up, we turned around, so that we would have enough time to check out all the other places we were planning on visiting. One last photo of the double arch from above on the way down:



Heading down Dry Fork in search of Spooky and Brimstone, we encountered a short but relatively narrow section of the canyon:





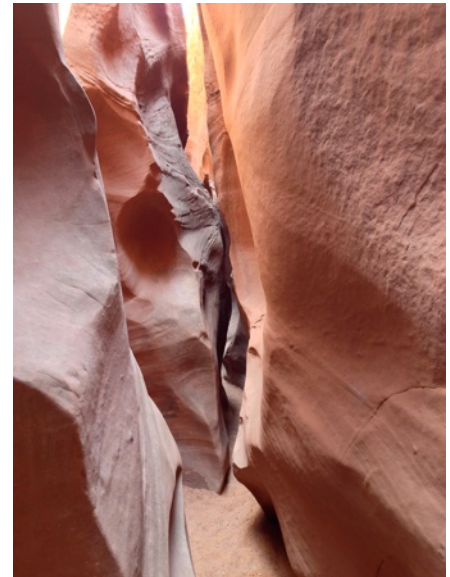
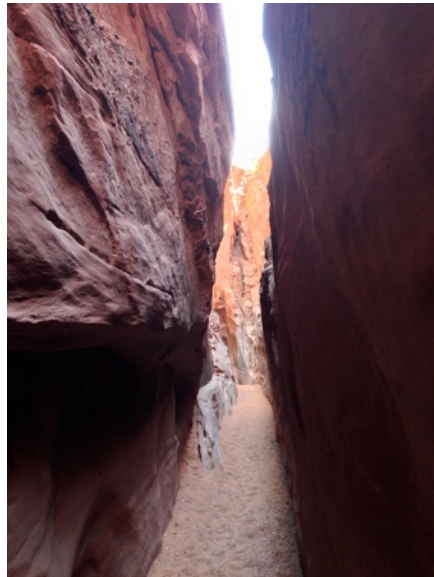
As we figured that we had accidentally passed the entrance to Spooky, we turned around at the end of this narrow section and headed back up-canyon in search of Spooky. Photo looking down-canyon from where we stopped:



Entrance to Spooky slot:



The lower narrows of Spooky:



Looking into Spooky from above:



The upper portion of Spooky slot:



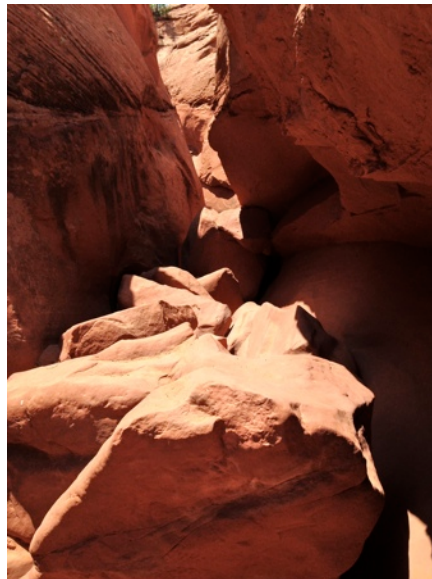
A bridge in the upper end of Spooky:



More photos of the slot:



The boulder pile where I decided to turn around:



The entrance to Dry Fork slot:



The narrows of Dry Fork slot:



After leaving the Dry Fork Slot Trailhead, we drove back towards Escalante on the Hole-in-the-Rock road, stopping at Devil's Garden. Hoodoos at Devil's Garden:



Metate Arch (left) and Mano Arch (right):



Metate Arch from above:

