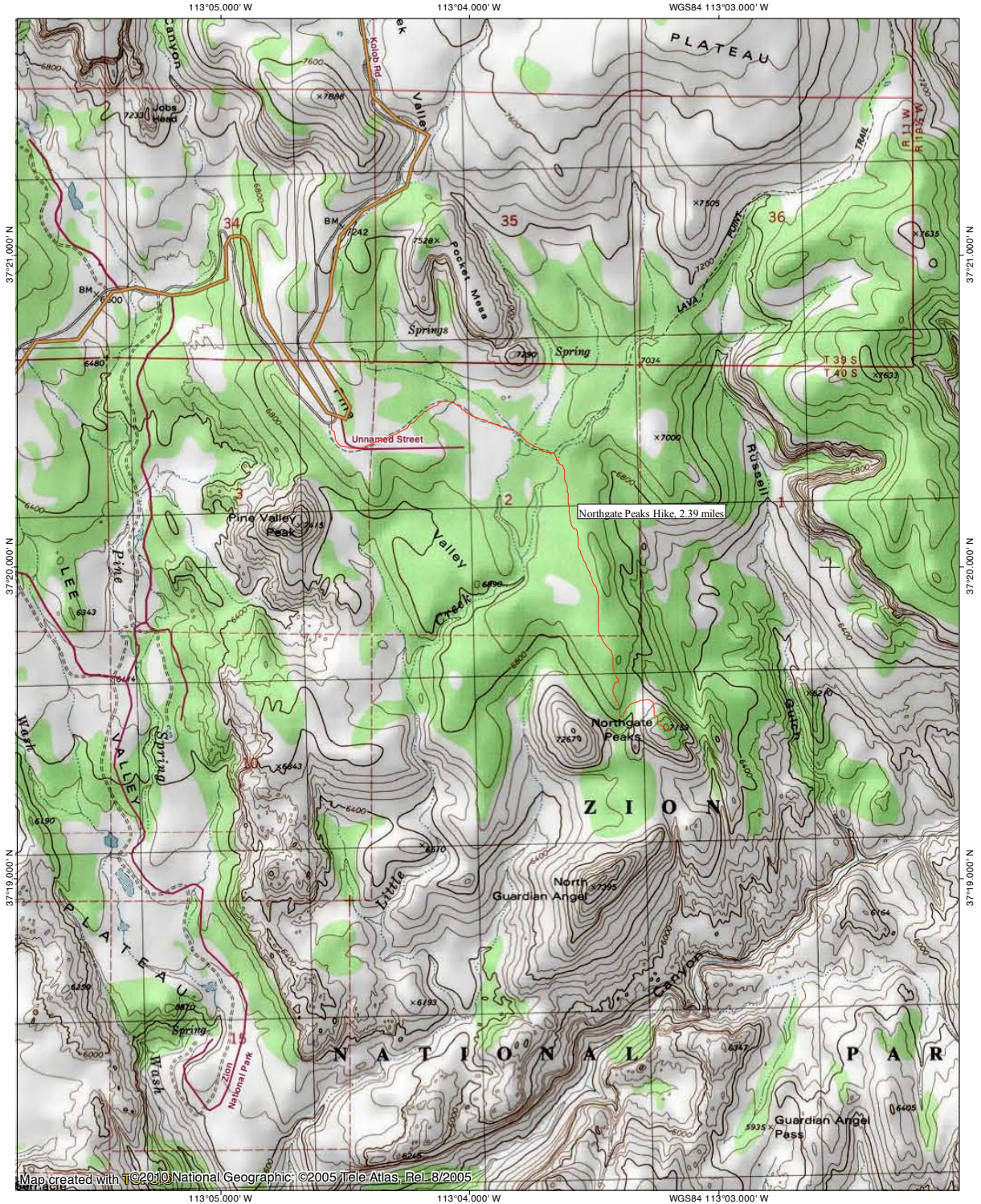


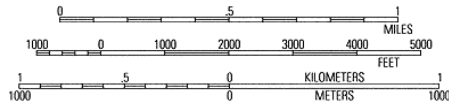
NORTHGATE PEAKS, KOLOB TERRACE, AND LOWER PINE CREEK IN ZION NATIONAL PARK

TOPO map of the Northgate Peaks hike:

TOPO! map printed on 06/13/13 from "Untitled6.tpo"



Map created with ©2010 National Geographic, ©2005 Tele Atlas, Rel. 8/2005



Kolob Terrace Road:



The eastern Northgate Peak (which we climbed) is in the left of the photo, the western Northgate Peak (which we didn't get to the top of) is in the right of the photo, and the North Guardian Angel is right-of-center in the photo:



View from just below the eastern Northgate Peak:



There is a fairly well-worn unofficial trail to the top of the eastern Northgate Peak, which makes the hike quite easy:



At the top:



View south from the top:



View north from the top:



Another panorama photo from the top:



Zooming in on the eastern Northgate Peak from the viewpoint (where the official trail ends):



View from about half-way up the western Northgate Peak, which is where we stopped as the slickrock began to get too steep for us:



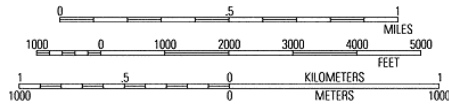
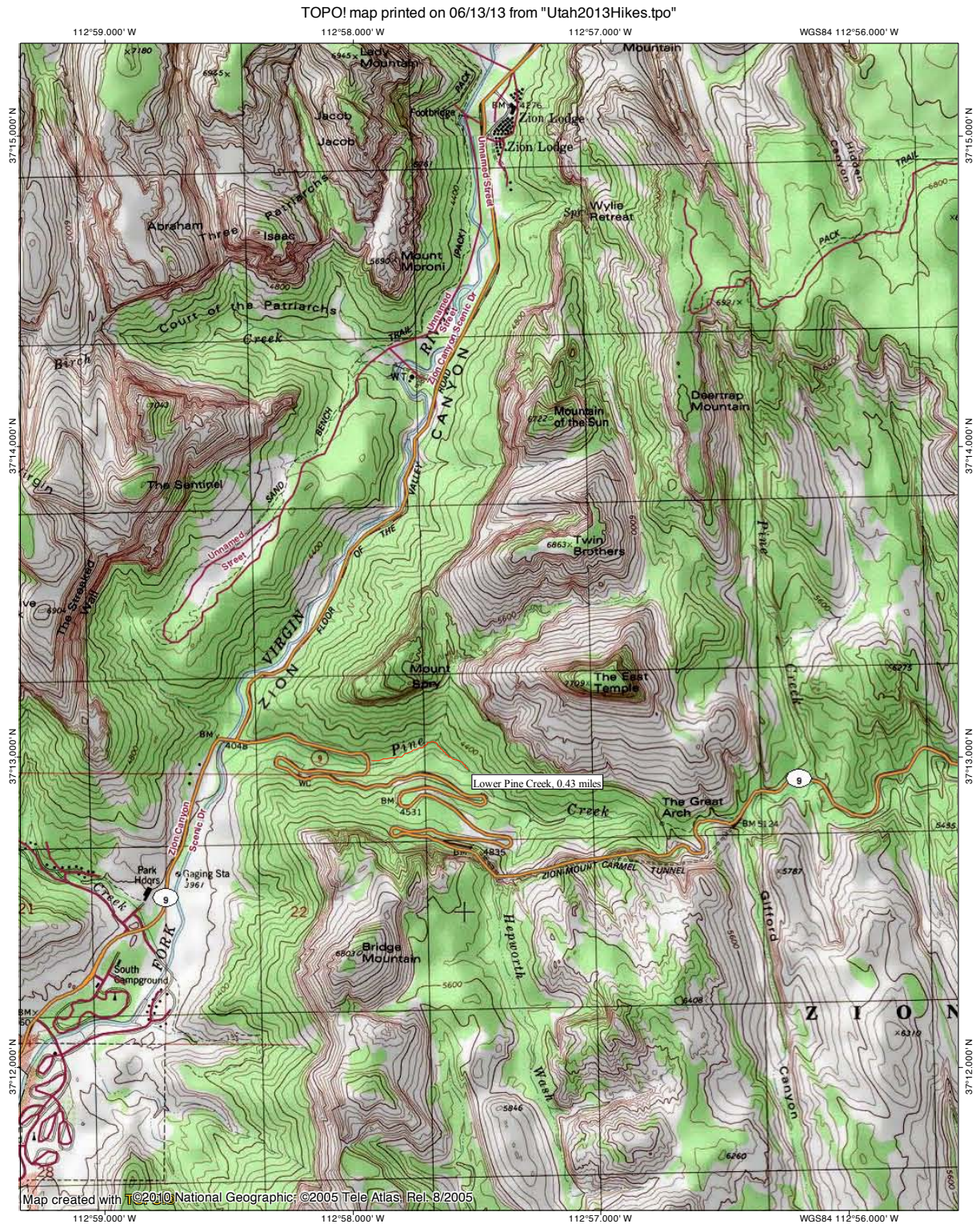
Looking up the slickrock from where we stopped:



View from Lava Point, further up the Kolob Terrace Road:



Later, we walked up lower Pine Creek, which we had checked out last December, but it had been too cold and icy to get to the waterfall. TOPO map of the canyon:



The Lower Pine Creek waterfall:



It is possible to bypass this waterfall on the left side. Looking down on the falls from above:



We continued up-canyon a little ways, but as it was getting late and the canyon was getting boulder-filled, we decided to turn back and finish the hike on another day when we had more time:

