

After a couple bends in the canyon, we can see the narrows beginning up ahead:



This is the dramatic entrance to the Marble Main Side Canyon narrows:



Note the interesting striping patterns on the rock here:



These three photos show our progress through these narrows before encountering the two back-to-back dryfalls:



This is the first of the two dryfalls; these falls are straightforward to climb, with the only difficulty being their slipperiness:



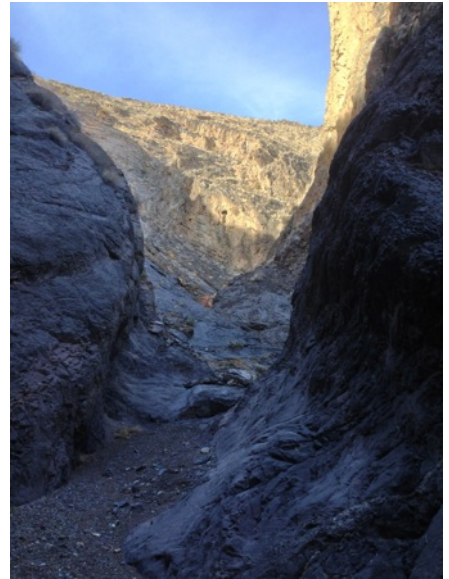
The second dryfall, approximately the same difficulty as the first:



Looking back down from the top of the second dryfall at the narrow section we just came through:



Continuing up-canyon, it is not quite as narrow as the beginning of the canyon but still definitely qualifies as very good canyon narrows:



Note that there was quite a bit of greenery in the canyon wash:



Shell fossils in a rock in the canyon:



Panorama of a nice bend in the canyon where it widens for a short distance:



Three photos of our continued progress up these very nice narrows:



Here the canyon widens briefly, then cuts through a narrower section:



At this point, we thought the narrows must have ended, but they actually continue on a bit further:



We continued on through this seemingly endless section of narrow canyon, which I feel to be just as nice as what we had seen in the first and second narrows of the main Marble Canyon:



A constriction in the canyon wash:



Up ahead, the narrows are still continuing:



Finally, the canyon begins to open up a bit more:



One last constriction before the end of the narrows:



From here, we could see that the side canyon stayed wide for quite some distance, thus this appears to be the end of the narrows:



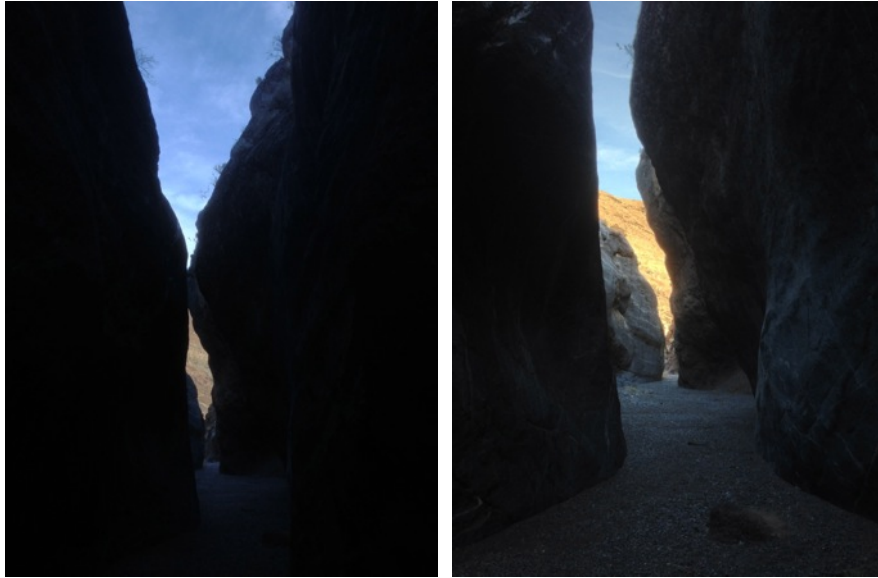
There was still water in some indents in the rock; also, I'm not sure what the white object in this picture is:



From here, we headed back down the Marble Main Side Canyon:



It was difficult to get a good HDR photo looking out of the beginning of this narrow section, but these are my best attempts; note that this is a very nice long section of narrows here:



Interesting rock at the beginning of the narrows:



Once back at the main Marble Canyon, we continued up-canyon a short distance to check out this amazing mud flow; note how the mud has almost completely covered the rock in this picture:





Two more photos of the mud flow in this canyon:



The mud covered the walls quite some distance up; note the rock nettle plants which either must have grown since the mud or have survived the mud flow:



From here, we decided to turn around as we did not want to be driving out of the canyon in the dark:



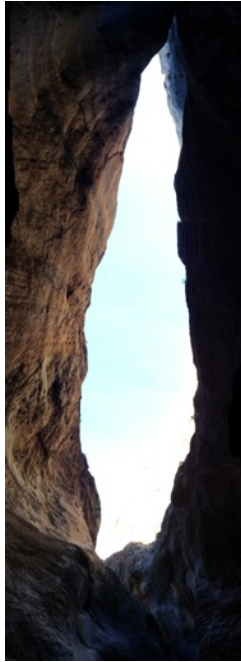
Two more photos of this narrower area with the mud flow:



The entrance to the second narrows of Marble Canyon, from a distance:



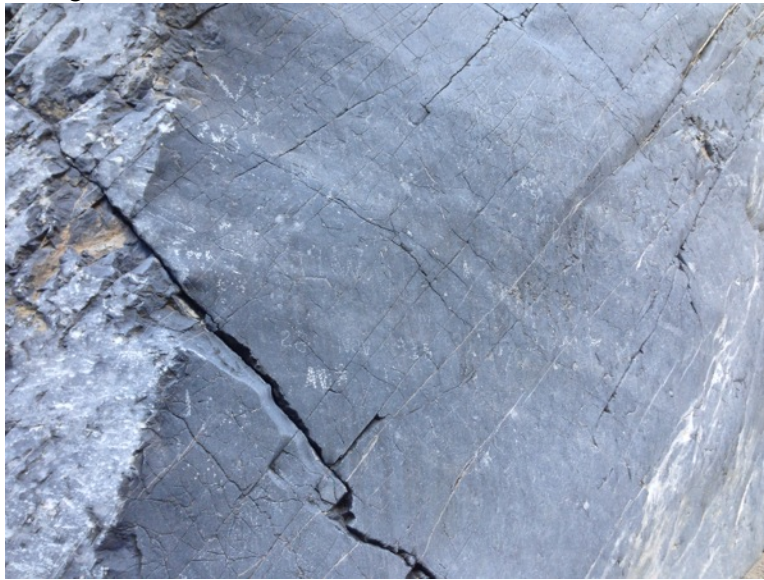
Panorama looking up and out of the second narrows:



Panorama of the impasse in the first side canyon of Marble Canyon:



Below are photos of rock art in this area. These are inscriptions of parties who hiked this canyon long enough ago that their markings are not considered graffiti:



Native American rock art:





Is this ancient Native American art, or is it modern human graffiti? I cannot tell:

