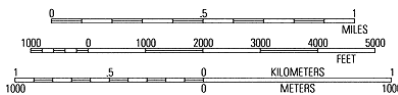
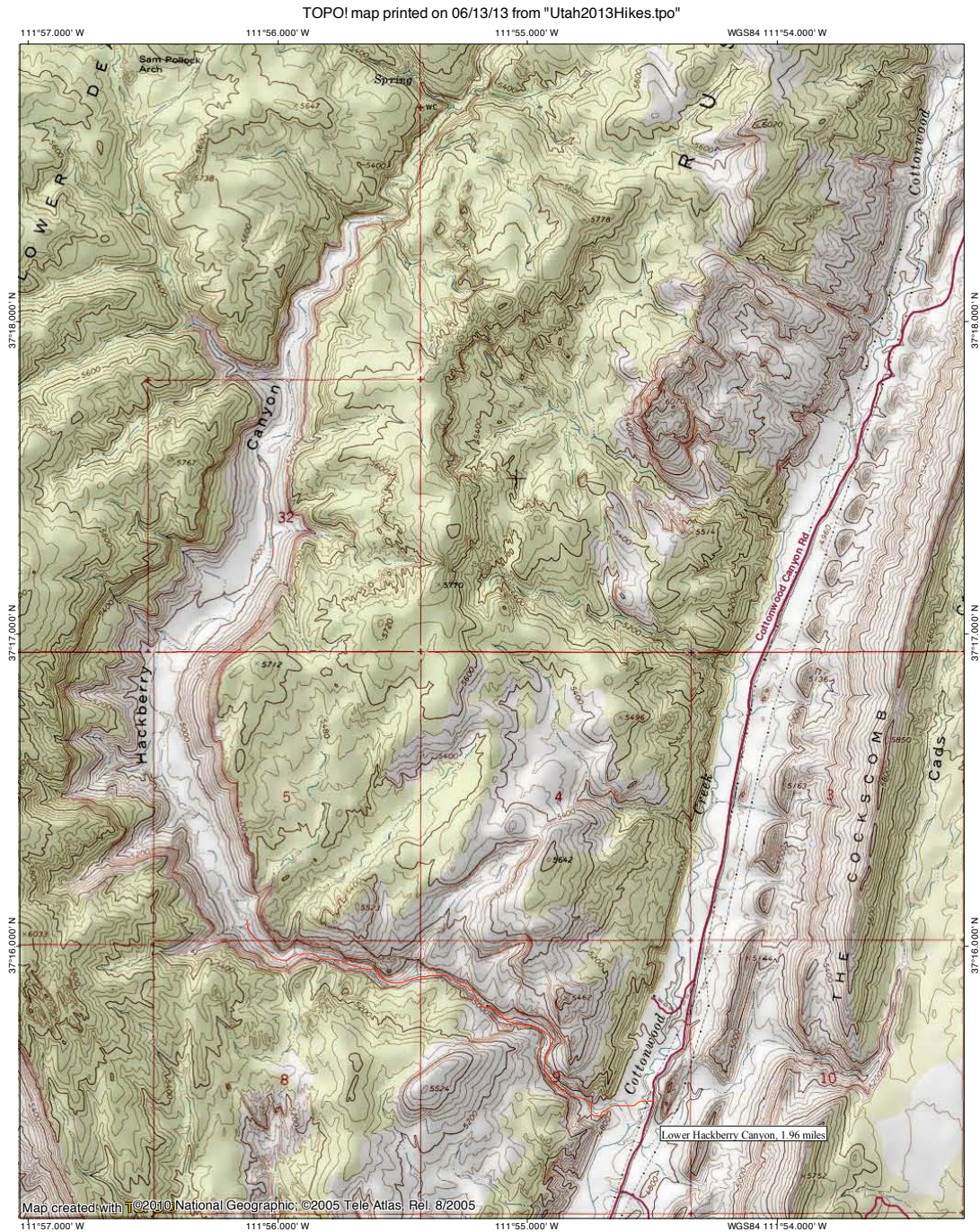


# LOWER HACKBERRY CANYON AND COTTONWOOD CANYON NARROWS IN GRAND STAIRCASE-ESCALANTE NATIONAL MONUMENT

We accessed Lower Hackberry Canyon from Kanab, driving to the Cottonwood Wash Road (between mile posts 17 and 18 on Highway 89), then continuing on this road for just under 15 miles to where we could see Hackberry Canyon joining Cottonwood Wash. We accessed Cottonwood Canyon Narrows by continuing up the Cottonwood Wash Road another 10 miles to the lower Cottonwood Canyon Narrows trailhead.

TOPO map of Lower Hackberry Canyon:



There was no water in the beginning of the lower narrows:



Then, we rounded a corner and found water creeping down in the lower narrows of Hackberry Canyon. We watched the Hackberry Creek slowly increasing its distance down the canyon in the morning; however, when we went past this point on our return trip, we saw that the water had gone about 60 feet past where it was when we left (as the sand was damp for this distance), but it had then receded back from where it had been! We figured that, as it had recently rained in the northern part of the national monument, the water made its way further and further down the canyon in the dark, but during the day it evaporated faster than it increased its length, so that might be why it had receded. You can see where the water starts in the middle of this picture:



The next four photos show some of the lower narrows of Hackberry Canyon:





Up ahead, we see a large rock pillar:



Interesting holes in the rock reminiscent of Buckskin Gulch:

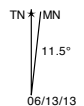
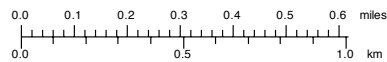
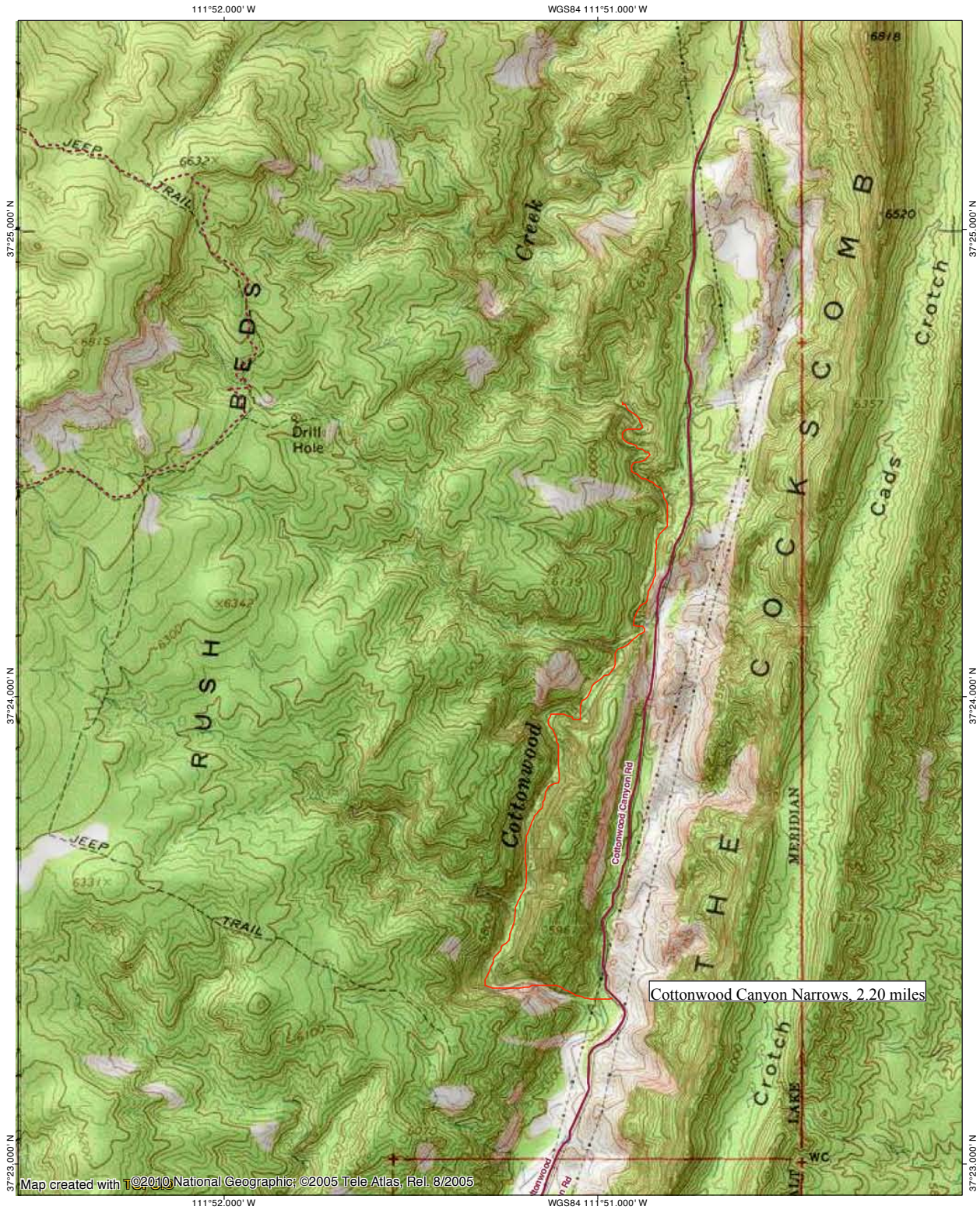


All too soon, we round a corner and the canyon starts to widen, and we decide that this is a good spot to turn around so that we have enough time to check out another location:



TOPO map of Cottonwood Canyon Narrows hike:

TOPO! map printed on 06/13/13 from "Utah2013Hikes.tpo"



06/13/13

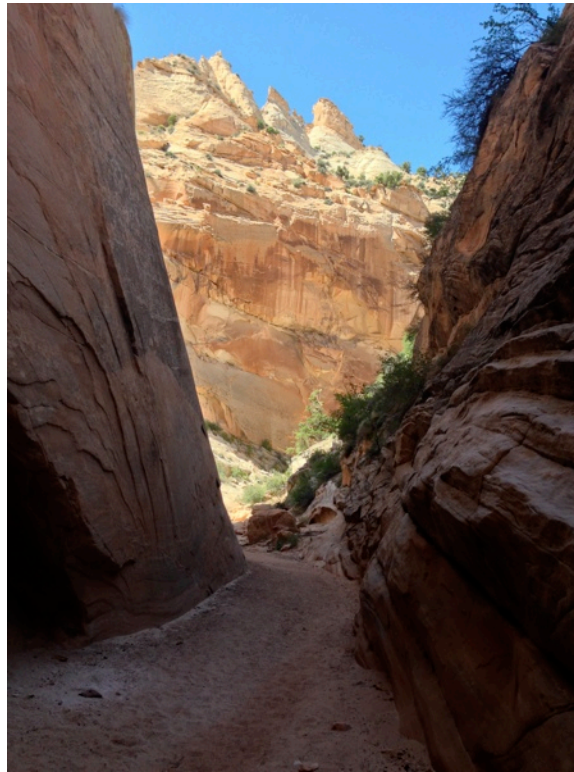
The entrance to the Lower Cottonwood Narrows:



The Lower Cottonwood Narrows are not particularly narrow:



Looking back out of a short side-slot in the lower Cottonwood narrows section:



The next two photos show the entrance to the narrowest part of the lower Cottonwood Canyon Narrows (which actually is just south of the Upper Cottonwood Narrows access):

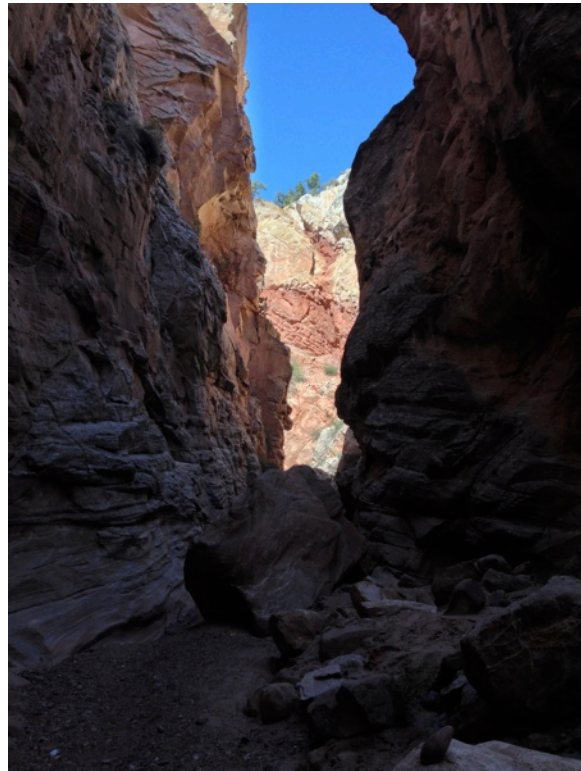




The best narrows seem to be above the Upper Cottonwood Narrows parking location:



The next six photos show this incredible stretch of narrows:





Interesting rock formations above the canyon which we spotted on our hike back to the car:

