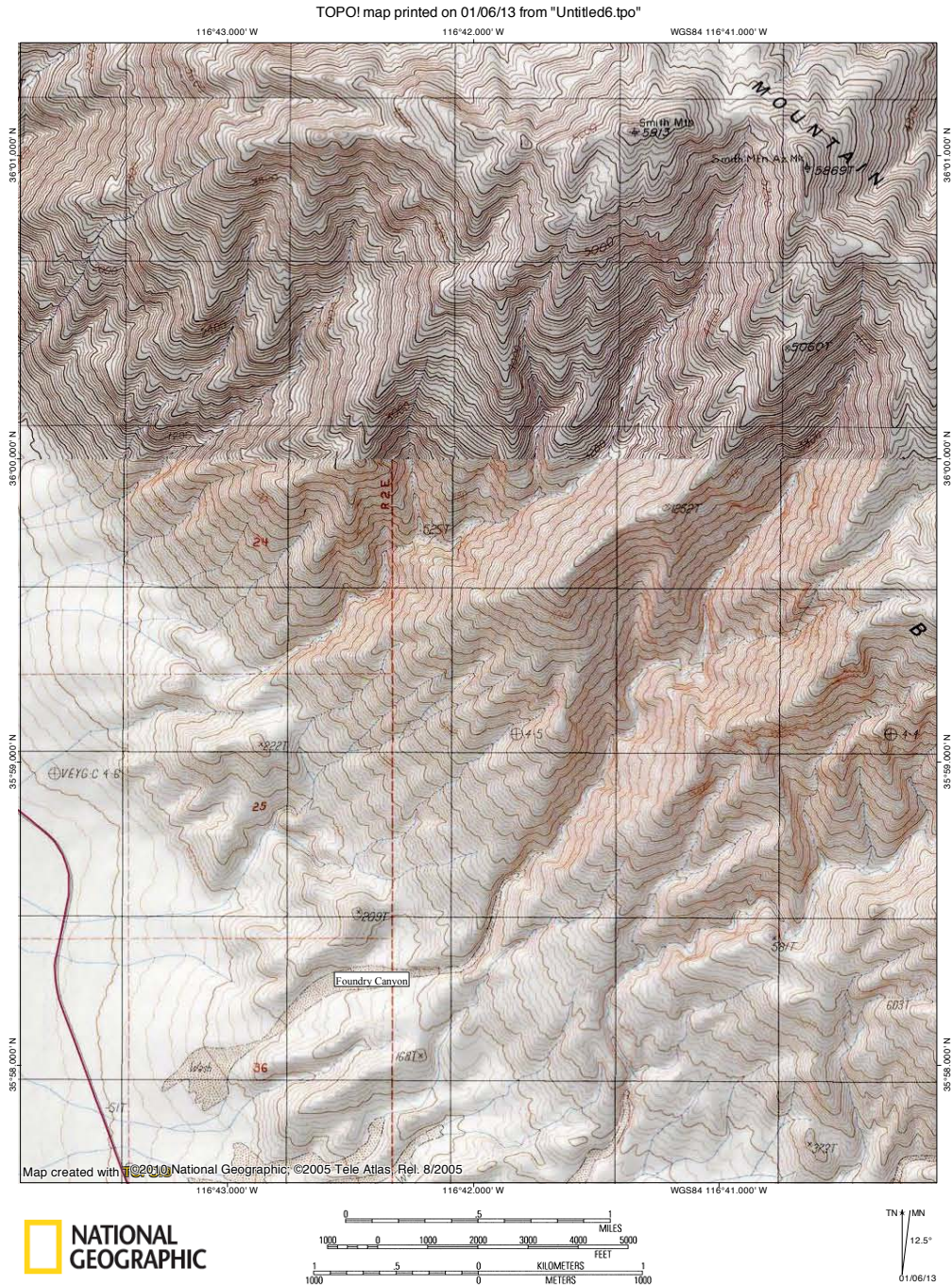


LOWER FOUNDRY CANYON

This canyon, like many canyons in the Black Mountains, has been fully documented by canyoneers, as there are so many dryfalls which would be very difficult, if not impossible, for most hikers to climb or bypass; however, the lower portion of this canyon has a very nice stretch of narrows which make for an excellent short hike. TOPO map of the canyon:



Panoramic view from where we parked of the canyon, surrounding area, and the lower part of Death Valley:



Looking up towards the canyon from the road:



Soon the alluvial fan enters a steep-walled wash:



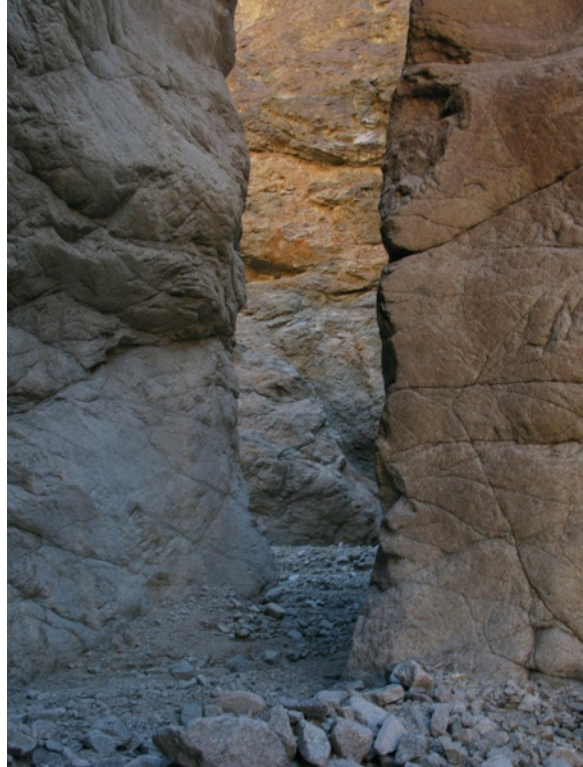
After rounding a corner, the canyon definitely looks like it will be very interesting...:



...If it doesn't immediately end at a big dryfall:



Luckily for us, the canyon cuts into a set of narrows instead of having an impasse:



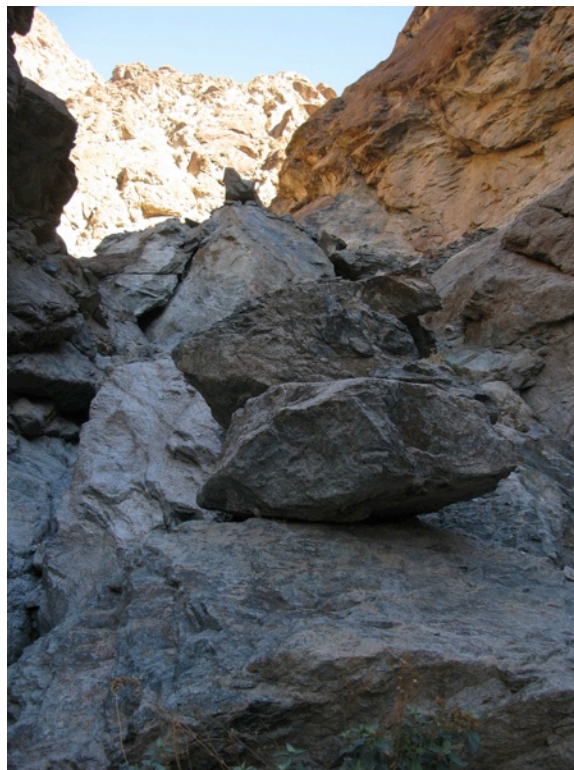
Around a couple corners, we encounter a small, 8- to 10-foot dryfall, which is slanted at about 60 degrees. Contrary to how steep it appears in the photo, it is possible to walk up it if you have good shoes, and on the way back you can very carefully slide down it:



Looking down this dryfall:



Continuing up-canyon, we encounter this boulder jam, which, like the dryfall, is easier to climb than it appears from this photo:



Past this boulder jam, the canyon enters a tighter slot of narrows:



The next two photos show this tight rock-slot:



Then, the canyon ends at a dryfall, about 15 feet tall with about 10 feet more or of boulders on top (note that this panorama image is a little distorted near the top of the fall and does not show the scale entirely correctly):



In this slot, there are two large boulders stuck above our heads, which is very interesting:



Looking up at the sky from the slot:

