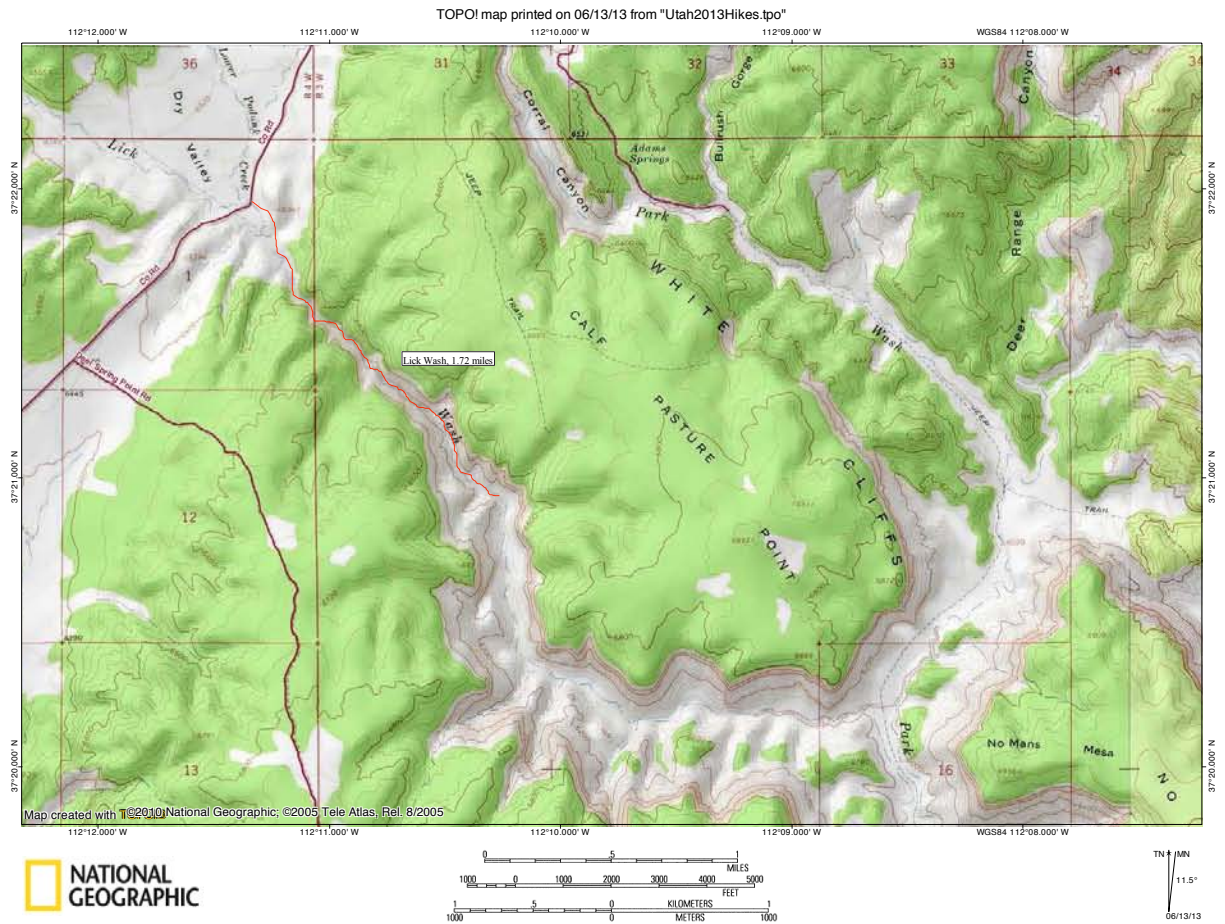


LICK WASH, BULL VALLEY GORGE, AND VIEWPOINT OF MICRO DEATH HOLLOW SLOT CANYON IN GRAND STAIRCASE-ESCALANTE NATIONAL MONUMENT

Lick Wash is located north of Kanab and can be accessed by first following the Johnson Canyon Road, then turning onto the Skutumpah Road and following it for about 15 miles. Bull Valley Gorge is located 10 miles north of Lick Wash on the Skutumpah Road. Micro Death Hollow (also known as Escalante Slot) is said to be accessible from along the Escalante River Canyon; it also is said to be accessible from a dirt road east of Escalante, between mile posts 67 and 66 on UT 12 (first on road labeled number 107, then taking the right turn onto the road labeled 108), which is the road we drove to get the views shown below. As it was late in the day, we did not attempt to hike down into the Escalante River Canyon to access this slot, but I did read that this is a possible way to enter the Escalante River Canyon.

TOPO map of Lick Wash:



Looking down at Lick Wash from the parking lot; the best part of the slot is near the parking lot:



After a short walk down the wash, the walls start to close in:



This is a very nice slot with interesting rock walls that are quite tall:



After a couple of turns, the canyon opens up more and there is increasing amounts of vegetation:



There are a few more narrow sections, though they are not as long as the initial narrows:



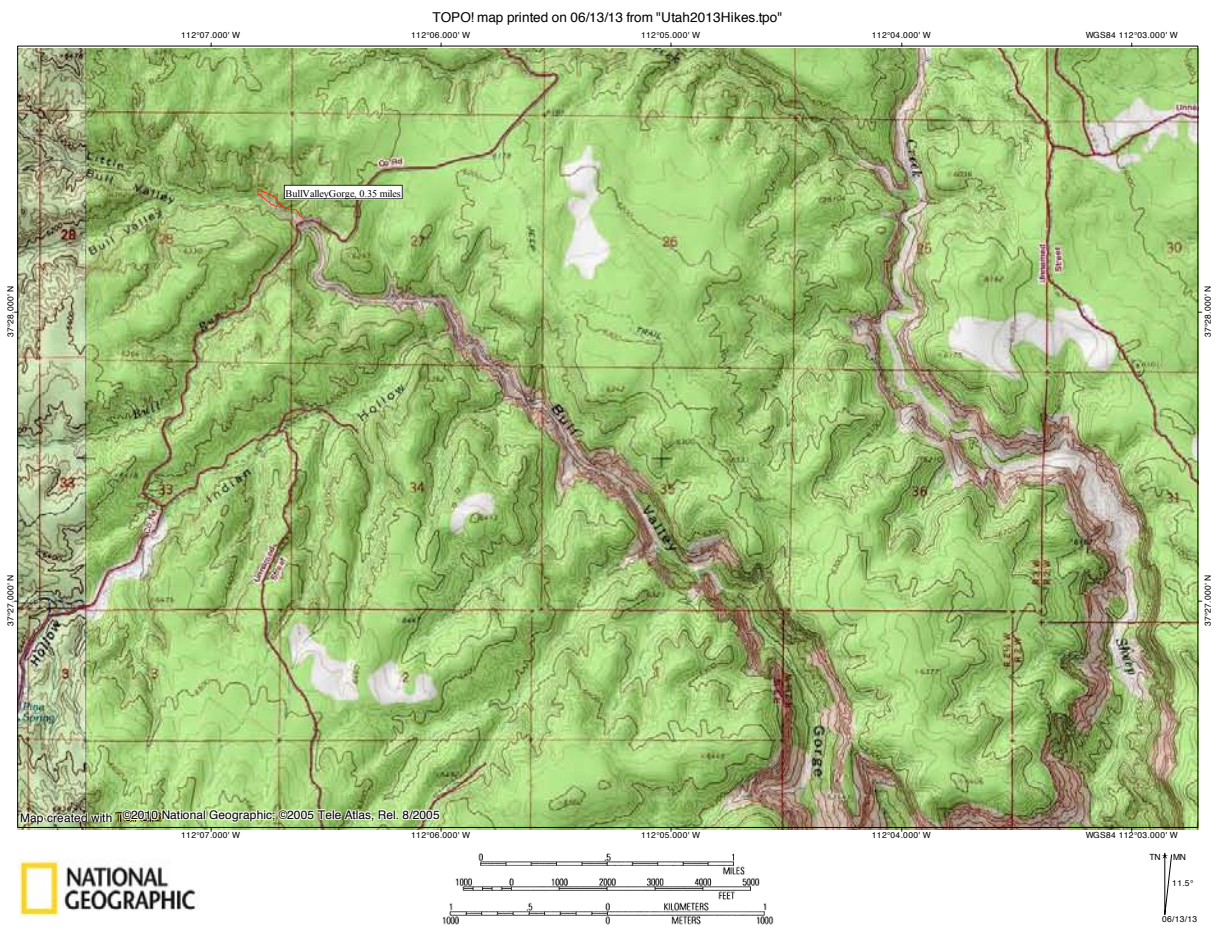
We decide to turn around when the canyon looks like it stays wide for a while longer:



Interesting rock holes in the canyon walls which we noticed on the way back:



From here, we continued on to Bull Valley Gorge. TOPO map of Bull Valley Gorge:



We followed the well-worn “rim trail” to where the canyon walls become low enough for us to easily climb down into the canyon:



The canyon floor drops quickly in this gorge, with many falls of about 15 feet. The first one is not particularly steep and has a few logs wedged in a crack to aid in descent, making it fairly straightforward to downclimb:



At the beginning, the walls are not very tall, but the canyon is still impressive:



Logs have become wedged in the slot in multiple places:



The canyon becomes even more impressive as the walls get higher:



Unfortunately, we are stopped by a 15-foot impasse just as we are getting to what appears to be the best narrows. Although this impasse had a log to aid in descent, we decided not to continue as we did not want to downclimb an obstacle which we might not be able to easily get back up. This photo shows the view looking down from the top of the impasse:



The lighting in the upper portion of these narrows as we hiked back was great for photographs:



We were able to get some excellent views into this slot canyon from the “rim trail” on our way back to the car:



Looking towards the Bull Valley Gorge bridge:



Looking up-canyon from the bridge:



Looking down-canyon from the bridge:



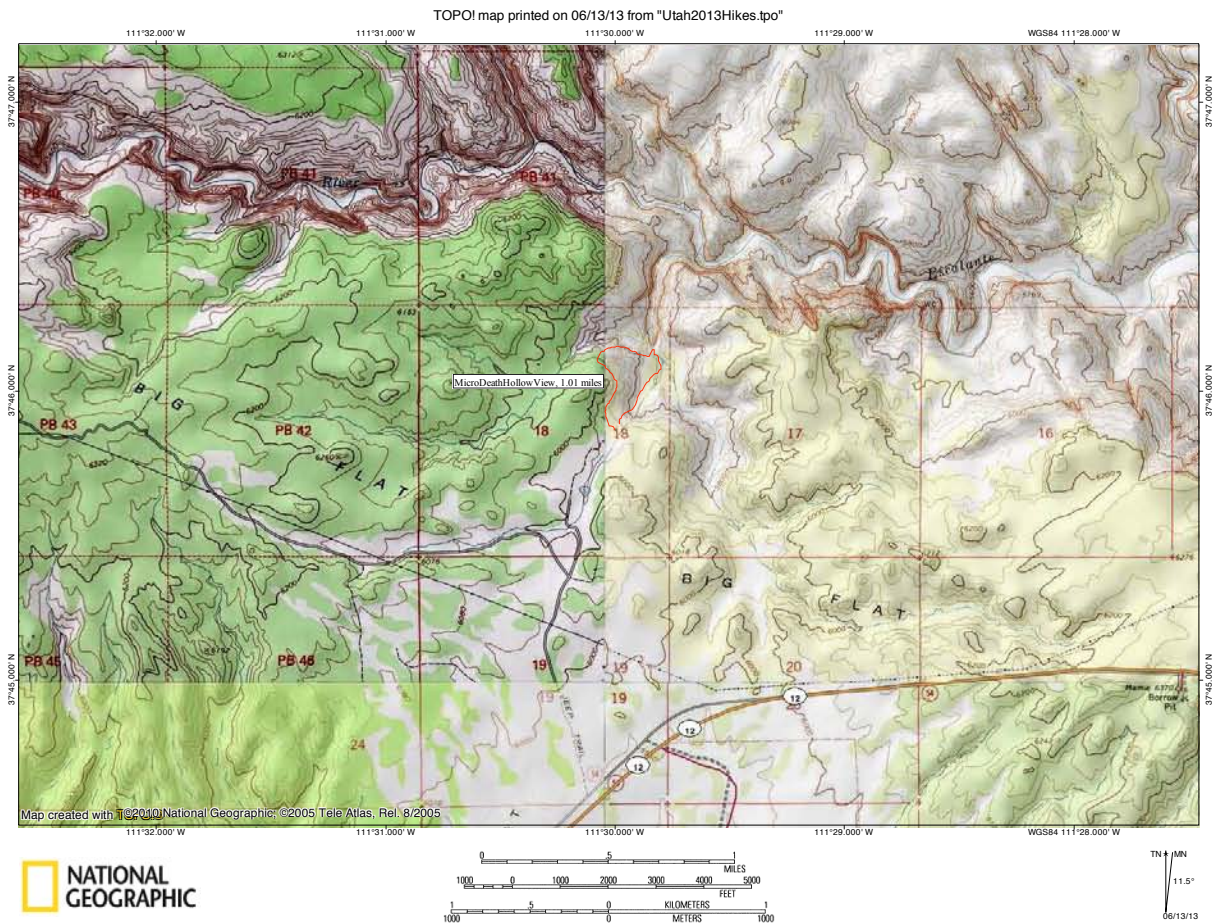
Looking towards the Bryce cliffs from the Skutumpah Road:



Looking towards the Cannonville/Kodachrome Basin area from the Skutumpah Road:



TOPO map of the Micro Death Hollow Slot area:



Overlook of the Micro Death Hollow slot from the end of road number 108:



Getting a better look at this slot from about halfway down the slickrock:



As can be seen in this photo, the slot is a long ways down:



There is a big dropoff at this upper end of the slot:



Looking up at some hoodoos on the rim of the canyon:



Potholes in the wash above the impasse:

