

KIT FOX HILLS CANYON NARROWS

Note: This canyon in the Kit Fox Hills was first spotted on satellite imagery by a Death-Valley.net forum regular, GowerGulch42, and credit for its discovery goes to him.

I visited this canyon in March of 2015. It is one of the longer and narrower (mini-)canyons in the Kit Fox Hills.

Google Earth Maps showing the location of this canyon:



The entrance to this canyon can be found by noting the lighter colored hills to the left of the canyon mouth (as seen on Google Earth):



There were lots of very nice wildflowers on the alluvial fan as we hiked up to the canyon:



Approaching the canyon mouth:



Looking over to the left at the colorful hills seen on Google Earth, which are helpful in locating this canyon when driving along the main road:



The abundance of wildflowers made for lots of good photo opportunities:



With patience, I was able to get some good photos of the desert five-spots; many photos came out blurry due to the slight breeze blowing through the valley on this day:



Up ahead, we enter the main wash and see that it splits, with the side canyon to the left being the one with the narrows:



The side canyon somehow doesn't look like it will have narrows as we enter it:



However, as we continue around a corner, we see that we are entering the start of the narrow canyon; note the small spire to the right in the photo:



Looking back out at Tucki from here; we did this hike after our drive into the valley, so we didn't have a lot of time for exploring:



Panorama when entering the beginning of the narrow section of the canyon:



There were many of these purple flowers in this part of the canyon:



Continuing up-canyon and about to enter a narrower part of the canyon with taller walls:



The canyon certainly is looking very nice at this point:



Tighter bend in the canyon:



The canyon swings around a few more turns, and keeps pretty much the same character, relatively narrow with medium-height walls:



Impressive split in the canyon (I think this is the 2nd relatively major side canyon heading off to the right, with the third, the one with the best narrows, being the most major):



Tall flower in the middle of the wash:



There were also some interesting formations up on the canyon walls:



Up ahead we can see that the walls will get taller and the canyon narrower:



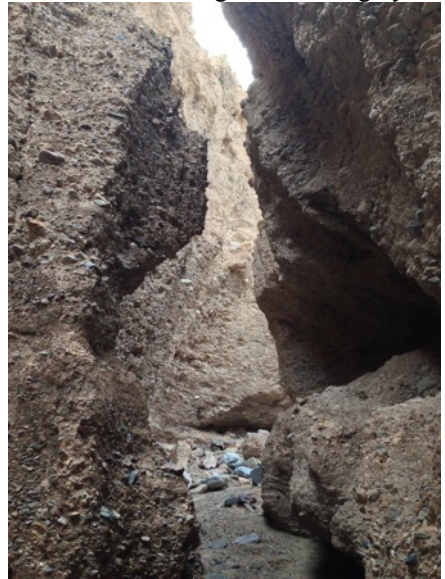
Soon, we reach where the main side canyon drops in:



Looking ahead, up the main canyon, which gets narrower past this third side canyon:



But first, we checked out this third side canyon, which looked to have some very nice narrows from the Google Earth imagery:



The side canyon opens up around a couple turns:



Then, around the corner, the canyon floor goes through a section of short-walled narrows (~6 feet in height):



This trough then ends at a short "mud" fall:



Looking up and out of this trough/narrows:



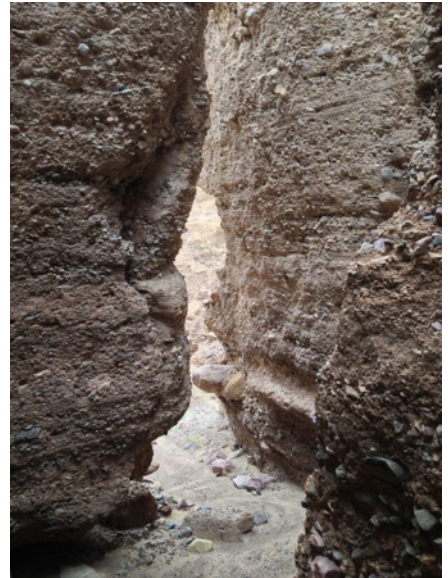
I climbed up above this section of the canyon to see what was beyond; it appeared that the side canyon remained relatively wide like this for some distance:



So, since we had a limited amount of time for this hike, we headed back down through the narrows:



Three final photos of this very nice section of narrows:



Continuing up-canyon around a couple of turns, it began to get less narrow and the walls became shorter:



The terrain still was quite interesting, however:



From here, we decided to turn around, as it looked like the canyon would daylight up ahead:



Heading back down-canyon:



Looking down-canyon from where some pieces of the wall had fallen into the canyon:



This was a spot that had some interesting formations in the canyon walls:



One final photo of the narrows, near the entrance to the narrow section, of a nice overhang and bend in the canyon:



There were quite a few of these plants in the main canyon wash:



Looking out towards the valley and the sand dunes in the fading light:



Tucki Mountain somehow always seems to be very photogenic in the evening:

