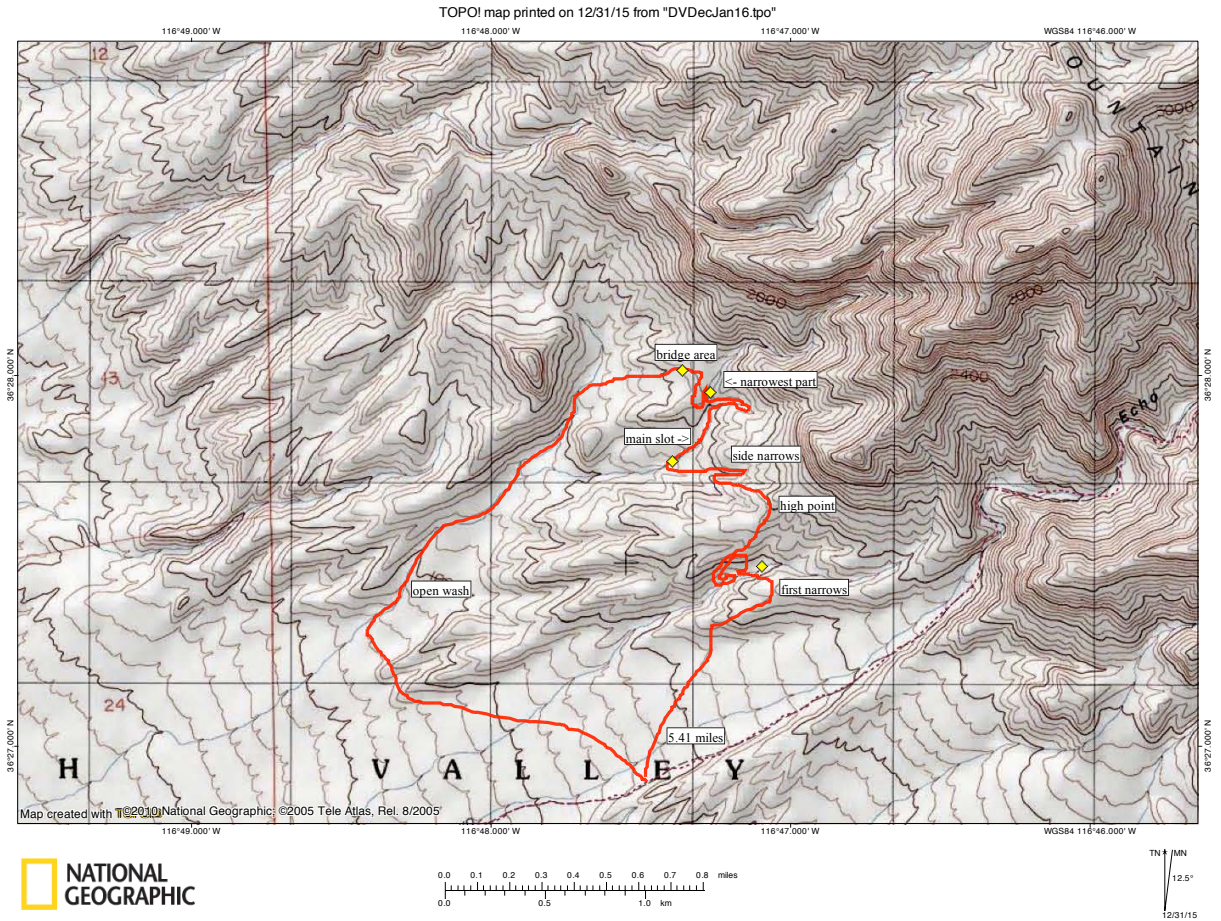
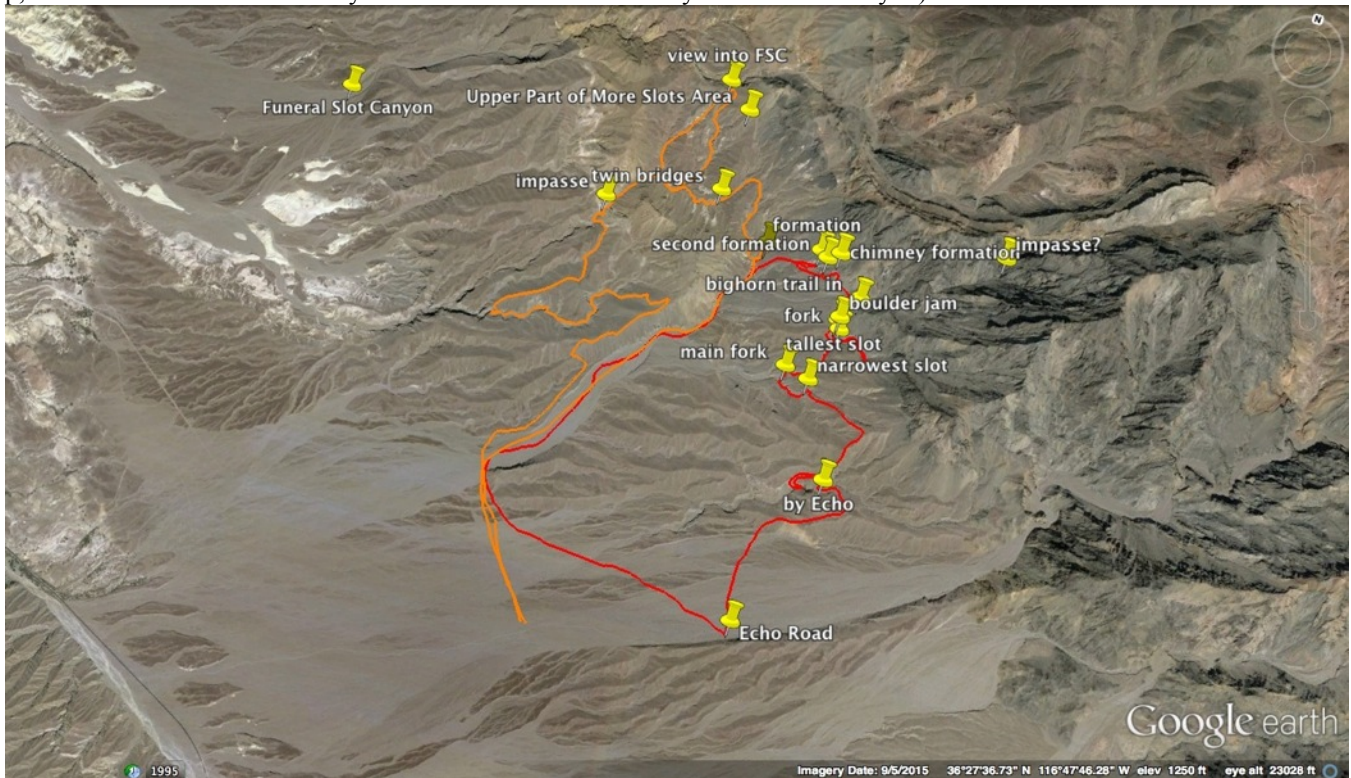


THE SOUTHERN OF THE TWO CANYONS BETWEEN FUNERAL SLOT CANYON AND ECHO CANYON

TOPO map for this hike:



Google Earth map of this area (note that the route in red corresponds to this hike, whereas the route in orange corresponds to a hike done later in this trip, of the northern of the two canyons between Funeral Slot Canyon and Echo Canyon):



We drove up the Echo Canyon road and parked at what appeared to be the best spot from which to hike over to the tan mound on the nearby ridge, seen to the far left in this photo:



The plan was to first check out the smaller wash between Echo and the major canyon we were heading towards; since it didn't have as spectacular of narrows as the major canyon, I'd recommend parking further down the Echo Canyon road if only hiking to the main narrows in the major canyon, because hiking up that wash is much easier than cutting across the ridges as we did here:



Panorama looking into the smaller canyon wash between Echo Canyon and the southern of the two canyons between Funeral Slot and Echo:



We found a good place to drop into this smaller canyon, then hiked down it to check out an interesting-looking feature I'd spotted on Google Earth (the feature appeared from the aerial imagery to be like the "Mountain Lion Den Slot" we had hiked the previous year):



Unfortunately, when hiking down from the top of the canyon, we encountered this major impasse at the upper end of the narrows:



Looking out to this impressively tall and narrow section of the canyon:



There is a short passageway (left of center) which must be hiked through to get to the top of this dryfall:



From here, we ascended the ridge on the other side of the canyon in hopes of being able to check out the narrows from below:



This narrow section of canyon is short, and while on the ridge we were able to look down the main wash of this smaller canyon:



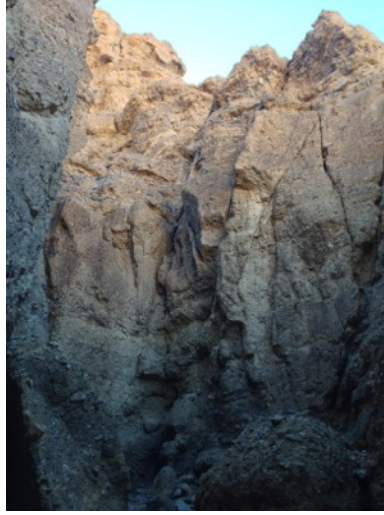
Upon dropping back into the canyon, we started heading up towards this short bit of narrows, hoping that we wouldn't be stopped from this side by another impasse:



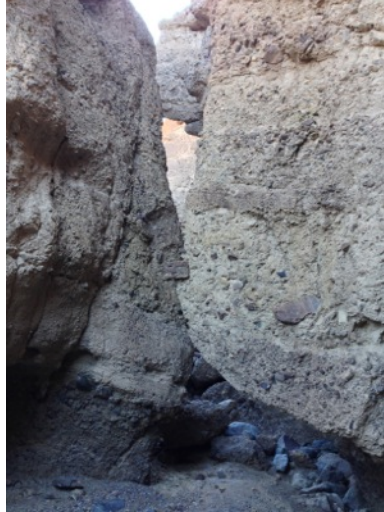
There were many large boulders at the entrance to this slot:



The walls were surprisingly tall here, considering how relatively short the nearby hills are:



And the slot was narrower in places than we'd expected—certainly very reminiscent of the "Mountain Lion Den Slot" which is located just south of the Hole-in-the-Wall wash (relatively nearby), although luckily there were no signs of mountain lions here:



Up ahead the slot opens up briefly, then narrows down again, and we know that we must be approaching the major impasse we had been hiking above earlier:



A short dryfall which is easily climbed:



Looking back down-canyon from here at the narrowest and deepest section of the canyon:



Just ahead is the major impasse; it was too tall for us to climb it, and the rock appeared to be crumbly:



One final view down-canyon; this is a nice slot, though nowhere near as long as the slot we would see later in the day:



Looking up at the route we took into this canyon, and which we would follow back up to the ridge:



There were many of these plants growing in this area, which were later identified as Rock Daisy:



Panorama of the small canyon between Echo Canyon and the southern of the two major canyons between Echo and Funeral Slot:



This was our first view into the canyon which was our goal for the day:



We continued up the ridge we were on for a short distance, so that we could get a view into some of the other side canyons of this major canyon:



Looking over at massive walls in one of the nearby side canyons:



Here we are about to drop into the "side narrows" marked on the TOPO map above:



We decided to first check out the narrows up-canyon, which I'd spotted on Google Earth:



These narrows were nice but not particularly narrow or deep:



Just beyond this narrow section, the canyon forked again, and the right fork looked to have a fairly narrow slot:



The side canyon did indeed get narrow:



However, around a corner it ended abruptly at an impasse (I'm not sure what's beyond the impasse, but I'd guess the canyon will open up and reach the ridge soon):



Therefore, we decided to head back down-canyon towards the main narrows; this is the start of the location marked "narrowest slot" on the Google Earth map above:



The slot is fairly short, about half the length of Tarantula Slot (in the area south of Hole-in-the-Wall), but equally narrow:



There is this short boulder-jam that must be down-climbed near the end of this slot (surprisingly similar to the one in Tarantula Slot!):



The entrance to this slot; it is definitely not the narrowest slot that I've hiked in Death Valley, but it is one of the narrower ones:



Looking back at the entrance to this slot from where it joins with the main side canyon:



The side canyon is relatively shallow here, but it gets deeper closer to the main canyon:



Looking up the main side canyon; from both Google Earth and what we noticed from the ridge, there doesn't appear to be any more slots up-canyon:



Heading down the main side canyon towards the main canyon:

