

Since the side-slot soon ended, we returned to the side canyon and continued up it:



There were some nice sections of narrows in this side canyon:



When the side-canyon looked like it wasn't going to have any more narrows, we gained the ridge to cross over into the next side canyon. This is the view looking down the side-canyon we'd just come up, towards the main canyon:



Panorama of the next side-canyon we'd be exploring, with the ridge we'd been on earlier in the day (after hiking Double Bridge Slot) in the background:



Looking down this side-canyon:



There was a nice hoodoo formation that we spotted in this side-canyon on our way back to the main canyon:



Looking down the narrow section of this canyon and out to the main canyon:



The last potential slot canyon of this hike turned out to be the very best slot, in my opinion. Notice how the entrance can barely be seen in the middle of this photo:



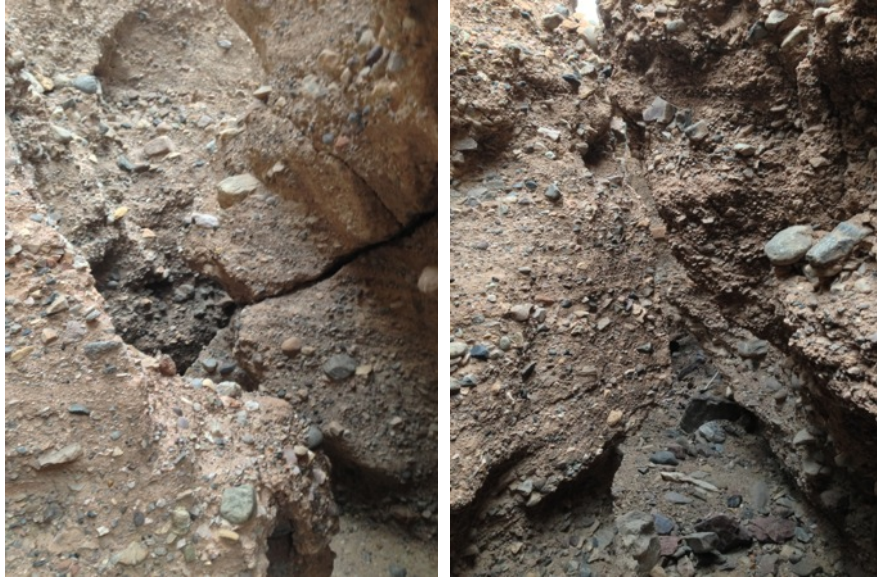
The slot looked to be amazing just from the entrance; we weren't sure how far we'd be able to get in the slot before being stopped or before it ended. Wisely, we dropped our packs (and wide-brimmed hats (!)) at the start of this slot:



Notice the rock stuck between the walls of this slot:



Around the corner, the slot became the tightest slot that I'd ever hiked in Death Valley—and it wasn't yet at its narrowest:



Soon we noticed that the main canyon seemed to be just over a rock fin, so I climbed up to take a photo:



The next five photos show our progress up the slot; unfortunately, they don't give an idea of how tight the slot is. To give an example of how tight this slot is, think about hiking sideways through a slot, and trying to take an iPhone out of your pocket to use as a camera and in some places having difficulty passing it from your hand on the down-canyon side to your other hand on the up-canyon side:





Looking up and out of this slot in one of the deeper sections of narrows:



The slot eventually became less deep, and luckily we hadn't yet encountered any major dropoffs. However, the slot became even narrower and it was difficult to hike through, even when going sideways:



Looking back down the upper part of the slot after having reached the end, where it daylight. Notice how narrow it is at the upper end—throughout the slot, extreme care must be used to not damage the slot by trying to get through a very narrow section:



This is where the slot comes so close to the main canyon:



Looking down into the deepest part of the slot, which is between the entrance and where the slot gets very near to the main canyon. Since the slot is so deep here and the terrain is very slippery, a hiker must be exceptionally careful not to slip and take a nasty fall into the slot:



One last photo looking down into the middle part of the slot, where some hikers may have to exit if the slot gets too narrow for them:



We hiked up the ridge for a short distance to find a safe place to descend back into the main canyon. Here's another photo of the entrance to Squeeze Slot, after we recollected our packs:



In the center of this photo, the spot where the slot passes very close to the main canyon can be seen:



Panorama of the main canyon from here, with the entrance to Squeeze Slot on the far left. It was starting to rain, hence the drier ground underneath an overhang in the canyon:



One last photo from our hike back to the main road, this one of an interesting wall dividing the main canyon from a major side canyon:

