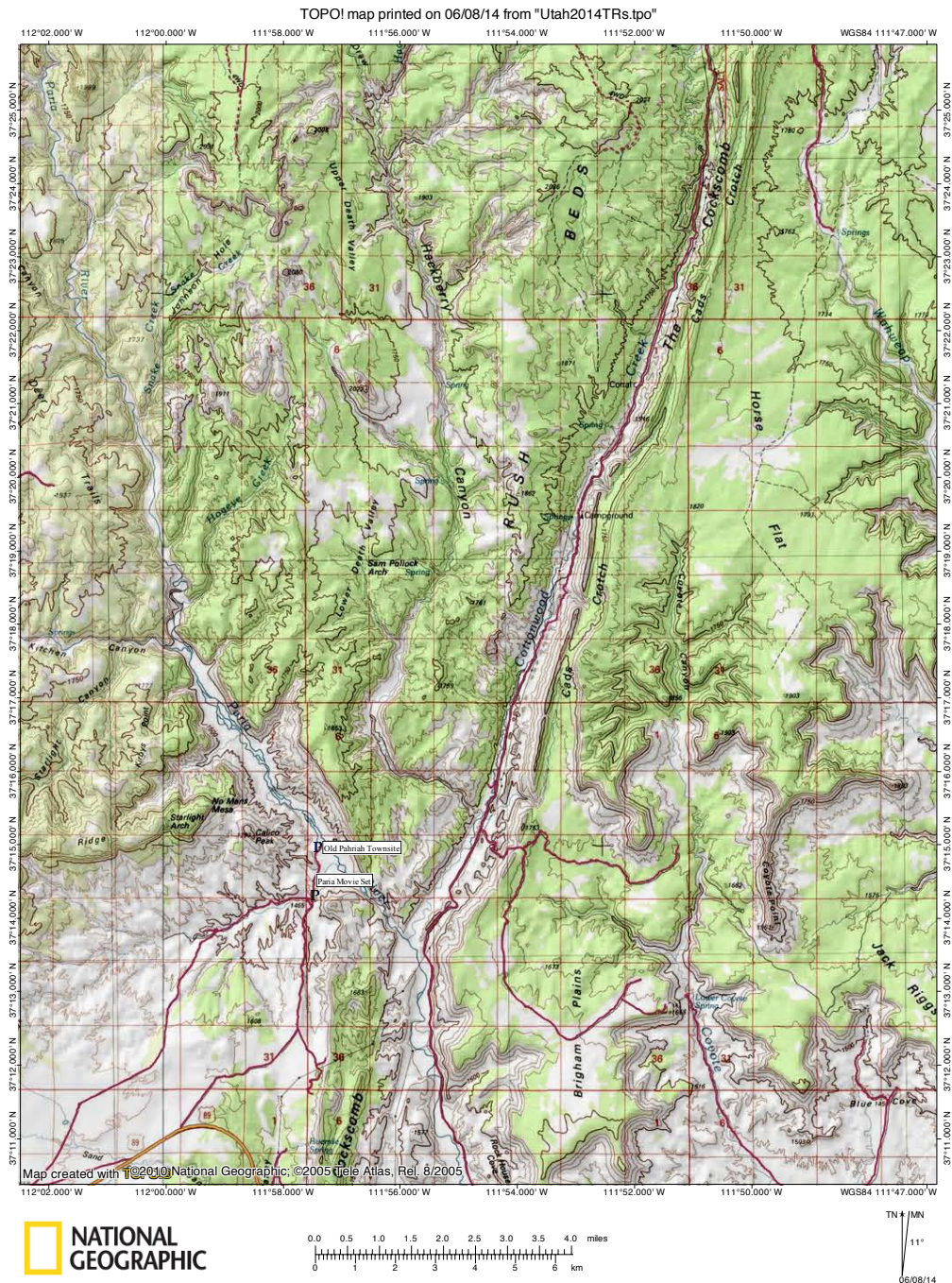


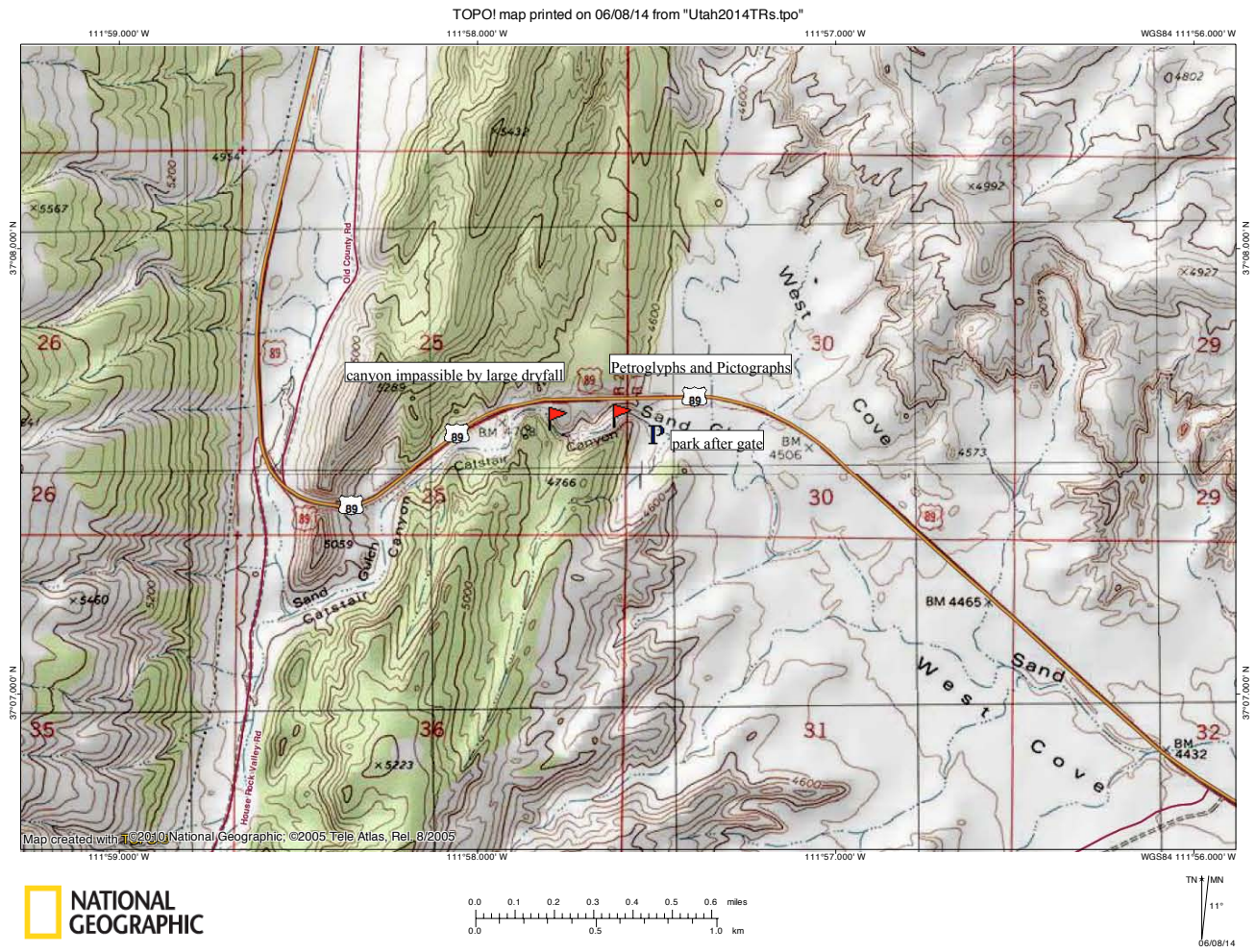
**COTTONWOOD CANYON ROAD, CATSTAIR CANYON PETROGLYPHS AND PICTOGRAPHS, AND PAHREAH TOWNSITE,
GRAND STAIRCASE-ESCALANTE NATIONAL MONUMENT**

The Cottonwood Canyon Road connects Cannonville to Utah Highway 89 near the White House Trailhead. It is a much quicker and more scenic route when driving from Escalante to Kanab than the less direct (but paved) route by Bryce Canyon. The Cottonwood Canyon Road can have patches of sand and washboard, but it is generally drivable in any vehicle. As we had driven this road and explored many of the hikes which begin from this road on our trip to Utah the previous year, we only stopped briefly for photographs and instead continued on to check out some interesting places we had not had time to check out the previous year along Utah Highway 89. Our first stop was Catstair Canyon, which has some very nice pictographs and petroglyphs; parking for this short walk is located near mile marker 24, on a short dirt road on the south side of the main highway (don't park in front of the gate, instead drive through and park just beyond at the sign, remembering to close the gate behind you). Our second stop was the Pahreah Townsite and the old Paria movie set. There are some very colorful hills in this area, which make for excellent photography.

TOPO map of the lower Cottonwood Canyon Road and the Pahreah Townsite:



TOPO map of Catstair Canyon:



View looking towards Powell Point on our way to Cannonville:



We also stopped at an overlook and got some nice views of the Bryce Cliffs (on the horizon in the center of the photo):



Panorama from this viewpoint:



The informative signs at this viewpoint:



This panorama was taken from the Cottonwood Canyon Road, a little ways north of the Cottonwood Canyon Narrows:



Looking towards the Bryce cliffs again from here:



The beginning of the Coxcomb along Cottonwood Canyon Road:



As we had not exited the main canyon on our hike through the Cottonwood Canyon Narrows last year, we stopped at the trailhead parking and got some photos of the surrounding area:



Looking back up the road with the entrance to the upper Cottonwood Canyon Narrows to the left:



A panorama from a little further down the road:



This is where the newer road leaves Cottonwood Canyon and cuts through and around a section of the Coxcomb:



Looking towards Castle Rock, which would be a great hike to do someday but would require cooler weather than we had on this trip:



View from just outside the Paria Ranger Station, with a prominent pyramid-like rock in the center (which we noticed we could see from many locations!):



The entrance to Catstair Canyon (the main road passes just to the north of this canyon, so traffic can be heard during much of the hike):



View of the surrounding area from the walk over to the mouth of Catstair Canyon from the parking area:

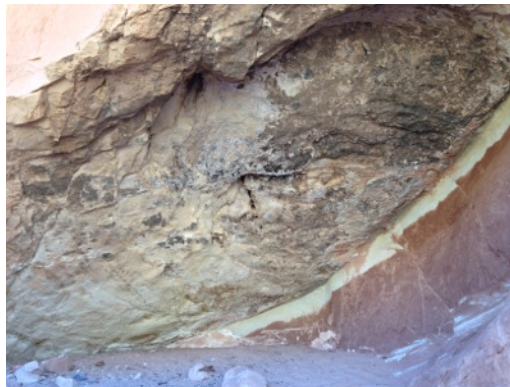


Petroglyphs and pictographs just inside the mouth of Catstair Canyon; these are fairly well-known and are easy to spot (just look at the large wall to the left once having entered the main canyon):





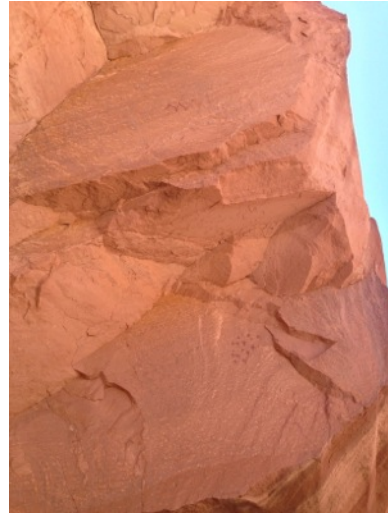
This is a cave/shelter, which is located behind some boulders:



These petroglyphs are just outside the cave and can be seen by climbing up on the boulders which block view of the cave from below:



There are more petroglyphs and pictographs in various locations nearby if you look closely; unfortunately, however, many have been damaged, both by natural erosion and by modern-day human graffiti:



After photographing the petroglyphs and pictographs, we continued up-canyon; the next three photos show more of this lower section of Catstair Canyon, before we reach an impasse:



Up ahead is the impasse; it appears that the upper canyon can be accessed from a turnout on the main road; however, it looks like it would be a difficult turnout to enter if one is driving west as the road is high-speed and the turnout is just before a blind curve. Also, it appears that the canyon does not have any particularly interesting features beyond this point:



Looking at a small side-canyon (with impasse near the beginning) just before reaching the foot of the major impasse:



From here, we decided to turn around; we had missed this petroglyph near the beginning of the canyon on our way in:



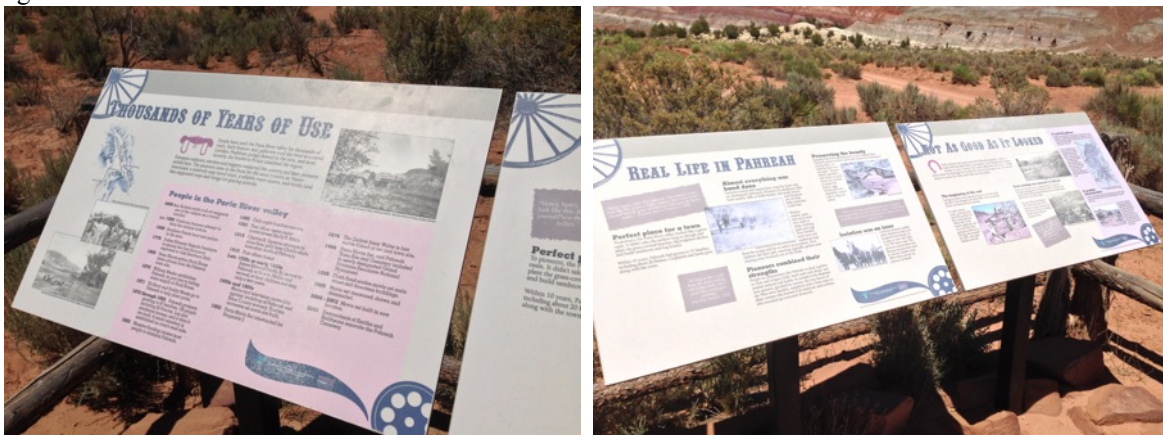
Our next stop was the Paria movie set and the Pahreah townsite. The colors in this area are spectacular:



I think this formation is called Gingham Skirts Butte:



Informative signs at the Paria movie set and Pahreah Townsite:



Looking west:



Another view of more interesting formations in this area:



Continuing up the road, we reach the Paria River:



Looking down towards where the Paria River enters "the Box" and then joins with Cottonwood Wash:



When we reached the end of the (very sandy) road, we turned around (it was too hot to do any hiking there); view west from back along the road, with some toadstools in the center of the photo:



Three final panoramas from along the road to the Paria movie set:

