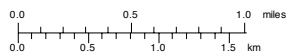
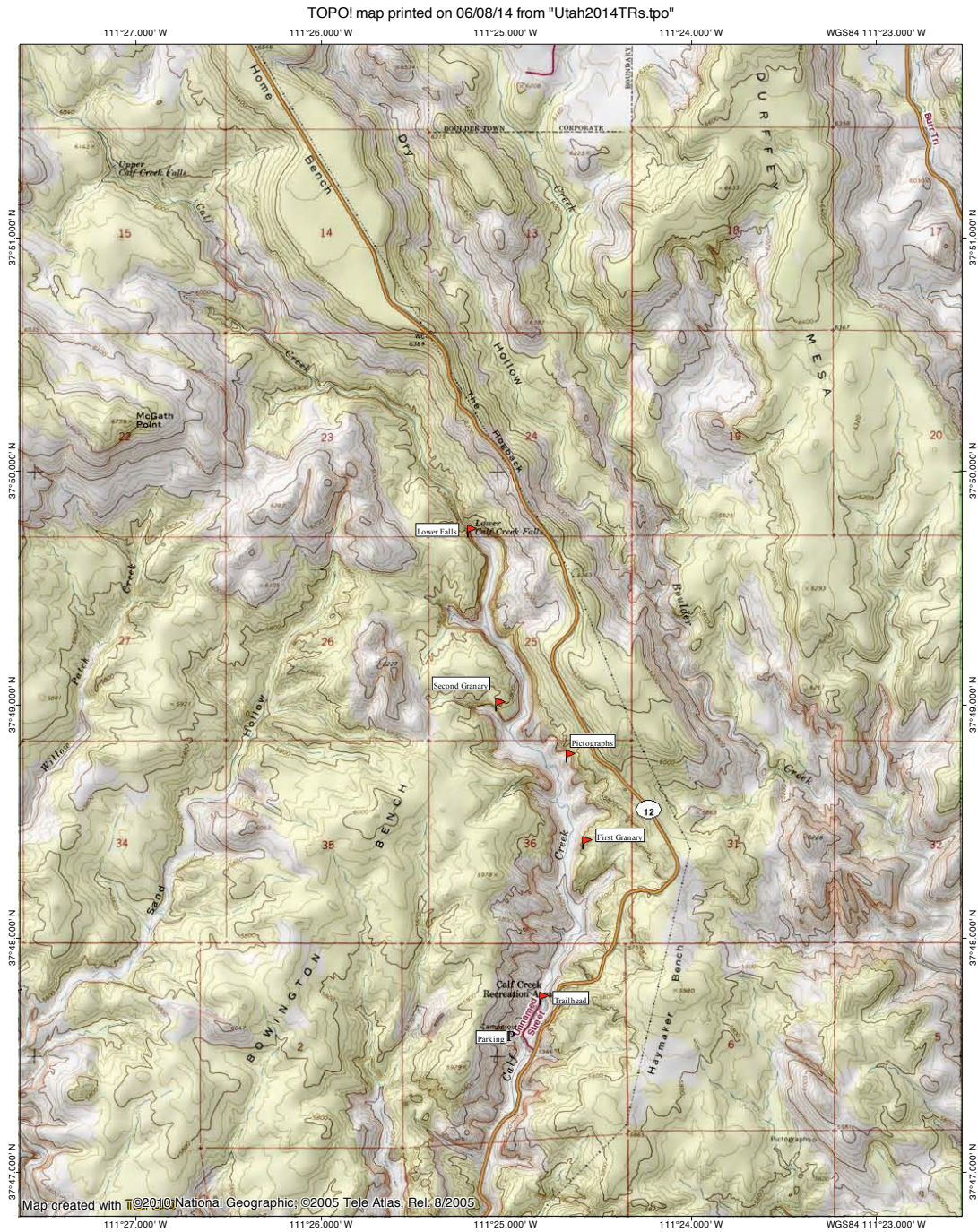


**LOWER CALF CREEK FALLS, COVERED WAGON NATURAL BRIDGE, AND CEDAR WASH ARCH,
GRAND STAIRCASE-ESCALANTE NATIONAL MONUMENT**

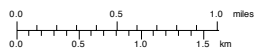
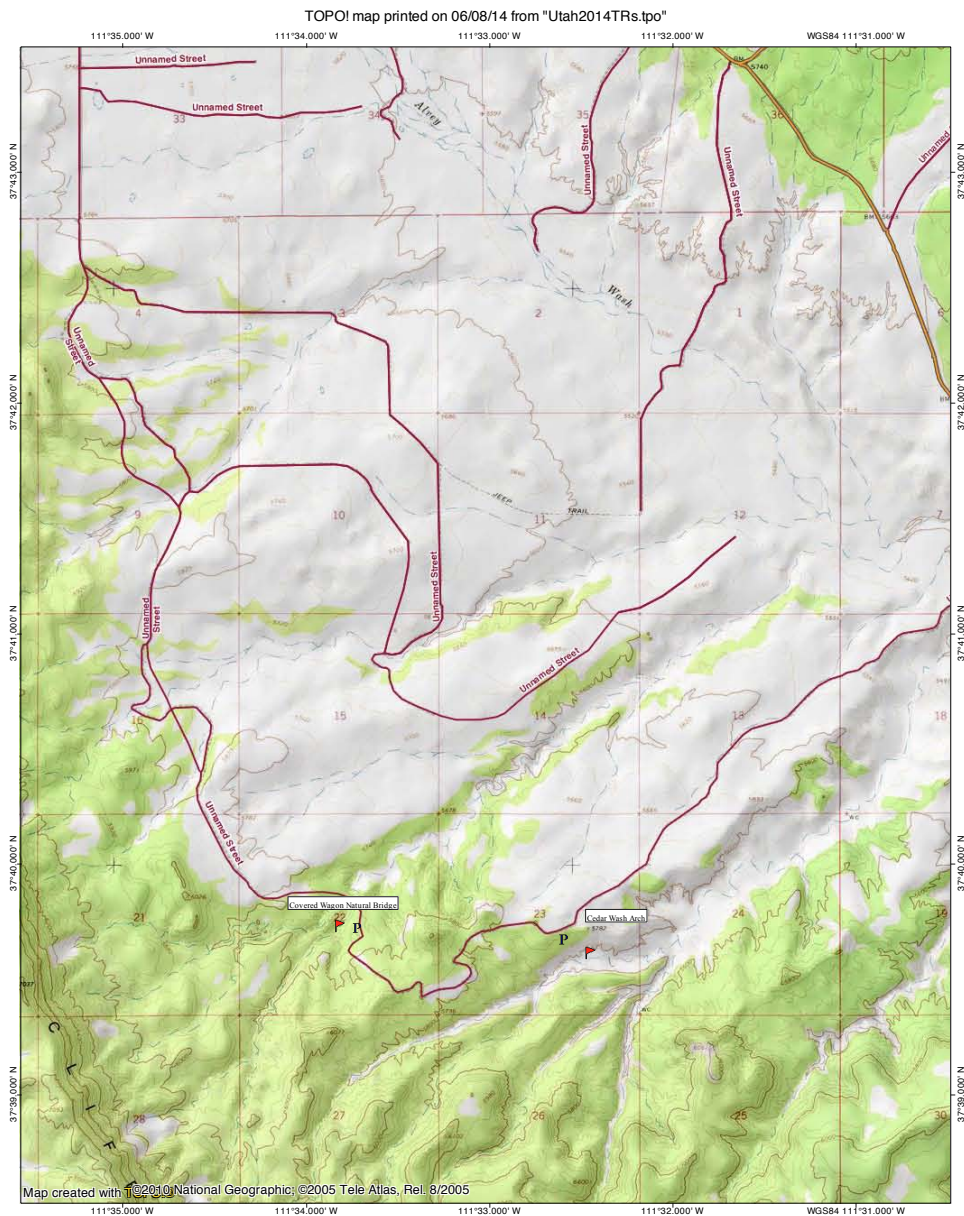
Calf Creek is an easy and popular hike in the Escalante Area. There is a day-use fee for parking in the campground area, which was \$5 per vehicle as of June 2014. The hike to the lower falls is about 3 miles each way, along a very well-maintained trail, which can get quite hot in the afternoon. There are some granaries and pictographs to be seen en route to the falls.

TOPO map of Calf Creek Falls area:



The upper end of the Cedar Wash Road can be accessed from Escalante, and it ends at a junction with the Hole-in-the-Rock Road. We decided to only drive the Cedar Wash Road to see the Covered Wagon Natural Bridge and the Cedar Wash Arch, as this road was in quite good condition (though reasonable vehicle clearance definitely was good to have!) rather than do the entire loop and drive part of the Hole-in-the-Rock Road, as the Hole-in-the-Rock Road is typically heavily washboarded. PLEASE NOTE that if you do decide to drive the Hole-in-the-Rock Road, unless you are skilled in driving washboarded roads, you should not be tempted to drive too fast. An Escalante local informed us that the tour guides who you may encounter speeding down this road air down their tires substantially, while the tourists in rental vehicles usually do not, and that there have been several instances where these tourists mistakenly have thought they could drive their rental vehicles as fast as the tour guides, not knowing to set their tires at a lower air pressure, and have lost control of and sometimes even destroyed their vehicle. Additionally, note that these tour guides drive these roads often and therefore are highly skilled in driving these kinds of roads, so simply airing down the tires is not necessarily sufficient. The parking area for Covered Wagon Natural Bridge is located about 9 miles from Escalante, at a turnout on the right (west) side of the road just after the road crosses a wash. A use trail leads to the bridge, which is quite near the road. Parking for the Cedar Wash Arch is located about 10.5 miles from Escalante, at a turnout from which a relatively deep canyon can be seen. Again, a use trail leads to an overlook of the canyon, and the arch can be seen below, on the wall of the canyon.

TOPO map of Cedar Wash Road area:



The trailhead for Lower Calf Creek Falls is located in the nearby campground:



The next six photos show progress up-canyon, towards the falls. Note that there is little shade along this trail, so it is necessary to bring plenty of water, and it is ideal to not be crossing these non-shady sections of trail during the hottest part of the day:



There is a granary located high up on the canyon wall here; however, with a poor sun angle, as seen in this photo, it can be quite difficult to spot the granary and even more difficult to photograph it. If you are looking for the granary, note that it is higher up on the canyon wall than might be expected by most viewers:



Two more photos, continuing up-canyon:



This area is where the three pictographs are located; they are close to the tree line on the back wall to the left in the panorama:



This is the section of the wall where the pictographs are located. You must look closely to see them from the trail:



This is where the second granary is located; it is in the alcove in the canyon wall seen just right of center in the photograph. It was difficult to spot while hiking in the main canyon; zooming in on a photo taken from the main trail seems to be the best way to spot the granary:



The next three photos are of a very nice alcove in the wall of the main canyon. This section of the canyon is where we finally got some shade on the hike to the falls (but it was in the sun on the return hike), and also where the canyon starts to narrow down somewhat:



Looking up-canyon; one thing to note about this hike is that the trail follows the west side of the canyon, above Calf Creek, as there is a lot of overgrowth down by the creek itself and it would be quite difficult to maintain a trail through all the trees:



There were lots of these flowers along the trail:



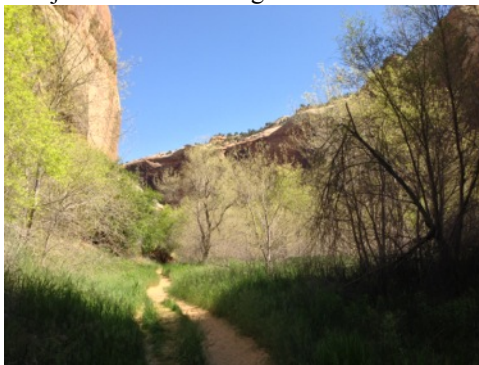
Two more photos continuing up-canyon:



A large flower we spotted near the trail:



The trail passes through a nice meadow-like area just before reaching the falls:



Our first view of Lower Calf Creek Falls:



Two photos of the falls:



A large patch of flowers on the way back:



We decided to check out the route to Upper Calf Creek Falls; however, it looked like it would be a hot trip across slickrock, and the hike back would be very tiring as it would be uphill with no shade, so we instead opted to check out the Cedar Wash Road:



This is the parking area for Covered Wagon Natural Bridge:



There are a few use trails in the area, but as it appears the bridge can be spotted from all of them it is unlikely that a hiker would miss the bridge altogether:



This is a view of the bridge looking up-canyon:



Looking down-canyon at the bridge, at an angle to show the red stains on the nearby rock:



Beyond the bridge, there is an amazing cutout area, where the river has cut an alcove but the other side of the canyon is underneath the overhang, so it almost forms a sort of tunnel:



Looking out of this alcove area; an impasse can be seen in the center of the photo. It would be quite easy to bypass this impasse, and there appeared to be a use trail which did so, but the canyon did not appear as interesting beyond here so we opted to check out Cedar Wash Arch instead:



One final panoramic photo of the bridge:



Looking down towards Cedar Wash:



Panorama of Cedar Wash, with the arch just barely visible in the far left:



Looking up-canyon:



A view of just the arch from a little further down the canyon rim:



A panorama looking up-canyon, from down-canyon of the arch, with the arch right of center in the photo:



The use trail out to the rim of Cedar Wash, as seen on the way back to the road:



As we were heading back towards Escalante, there appeared to be some rain in the area:



Nice sunset colors as seen from Escalante, looking down towards the Cedar Wash Road and the Kaiparowits Plateau:

