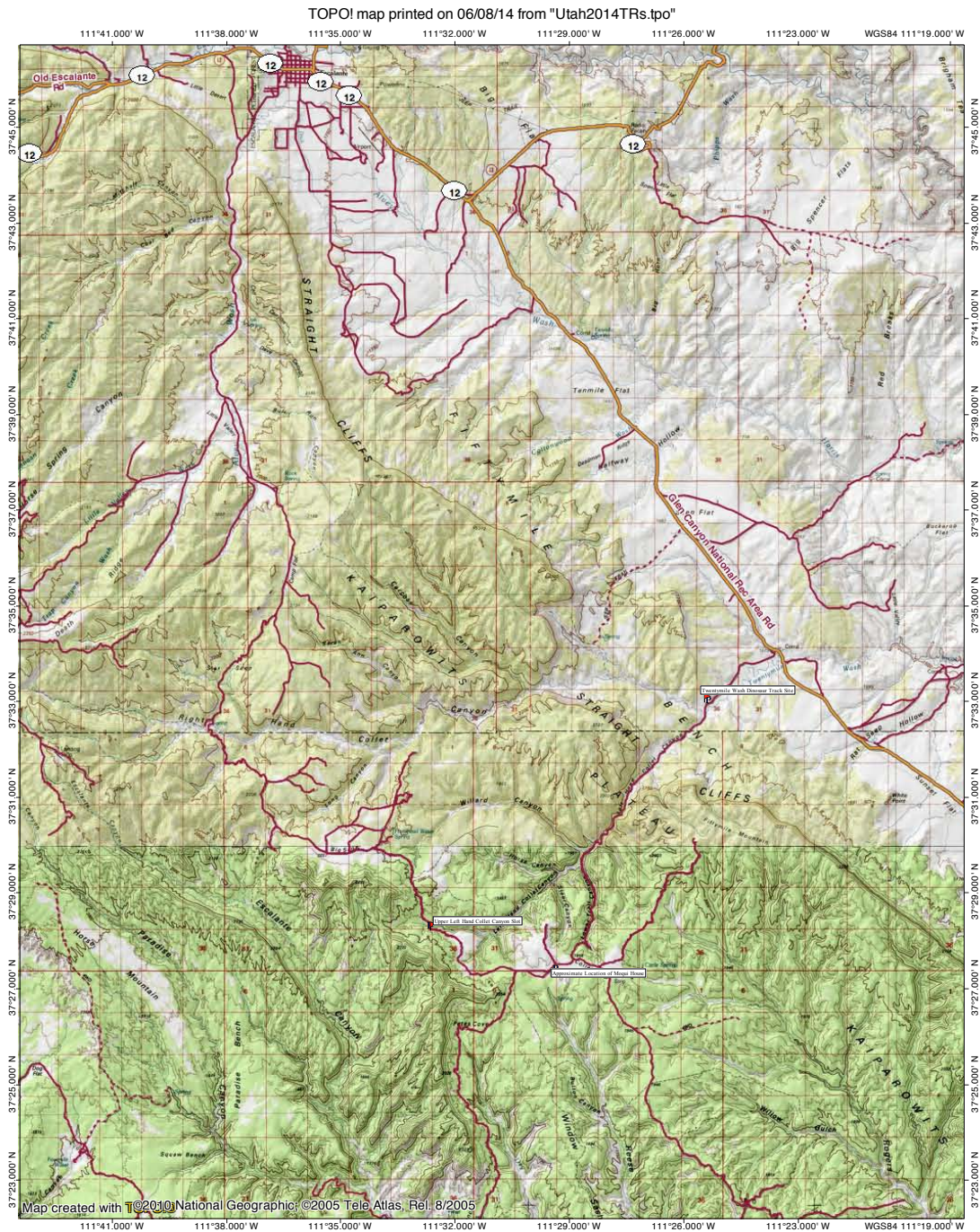


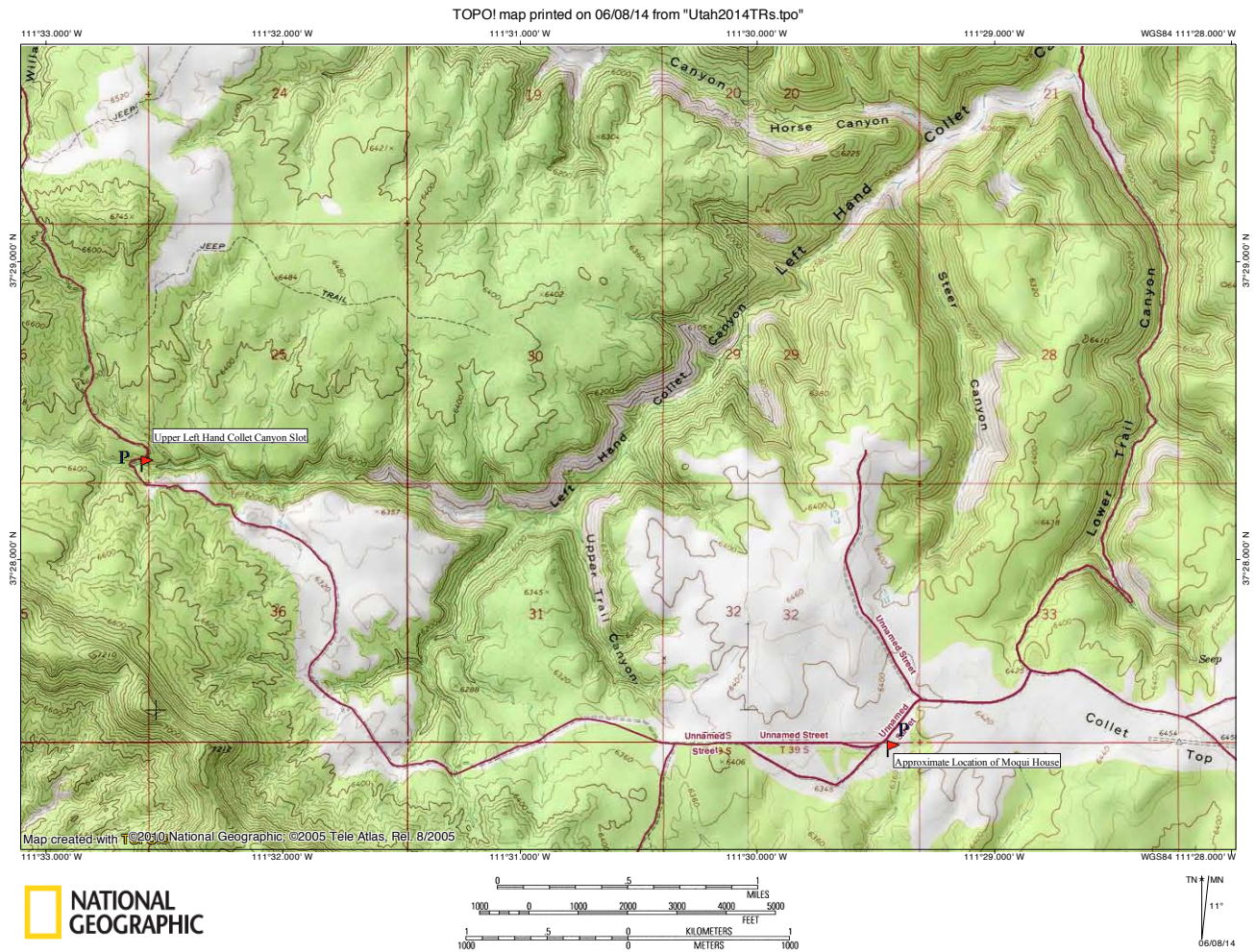
ALVEY WASH/SMOKY MOUNTAIN ROAD, UPPER LEFT HAND COLLET CANYON SLOT, MOQUI HOUSE, LEFT HAND COLLET CANYON ROAD, AND TWENTY-MILE WASH DINOSAUR TRACK SITE, GRAND STAIRCASE-ESCALANTE NATIONAL MONUMENT

The Alvey Wash/Smoky Mountain Road goes from Escalante to Big Water; it is generally drivable in most vehicles to where the Croton Road turns off (which is as far as we went on it), but it supposedly gets rougher after that and a 4WD vehicle is recommended to continue. The Left Hand Collet Canyon Road had been recently graded/repared, and it would have been passable in any vehicle with reasonable clearance; however, note that this road is subject to being washed out and impassable to almost any vehicle. DO NOT rely on this report from June 2014 for accurate road conditions, as they are subject to change rapidly!

TOPO map of this area:



More detailed TOPO map of the Upper Left Hand Collet Canyon area and the Moqui House:



The first six photos of this report show our drive along the Alvey Wash/Smoky Mountain Road, to the Upper Left Hand Collet Canyon Slot:





The road drops somewhat sharply down into the wash of Upper Left Hand Collet Canyon; 4WD would definitely be helpful if going back up this stretch of road:



The road isn't quite so steep going up the other side:



This is the entrance to the short slot at Upper Left Hand Collet Canyon:



The next four photos show this nice slot:



This is where we turned around on our exploration of Upper Left Hand Collet Canyon; we would have liked to check out more of the canyon, but as we did not have any information known for certain to be accurate on the condition of Left Hand Collet Canyon Road, we wanted to ensure that we had enough time to get back to Escalante before it got too late. View from the top of the boulder impasse (which looks like it would probably be bypassable):



Two more views of the drive along Smoky Mountain Road:



A nice panoramic view of the Upper Left Hand Collet Canyon from above:



At this point, we were getting near to where we would be turning off for the Croton Road and the Left Hand Collet Canyon Road. More views of the Smoky Mountain Road before we turn off:



Panoramic view of the road junction:



Corral near the road junction:



About halfway between this junction and where the Left Hand Collet Canyon road turns off is this small "Moqui House" (as it is called by Escalante locals):



Panorama looking back at where we had driven from above the Moqui House:



The road starts to get a little rougher beyond here:



Finally, we reach the top of Left Hand Collet Canyon Road:



We decided to take a short walk to stretch our legs before checking out the road, as we had made slightly better time than expected to this point:



The next fourteen photos show the beginning part of our drive down Left Hand Collet Canyon Road (through Lower Trail Canyon):





The road drops into Left Hand Collet Canyon via Lower Trail Canyon; this photo is looking up Left Hand Collet Canyon:



Continuing down Left Hand Collet Canyon Road (note the balancing rock in the canyon on the fourth photo):



We stopped briefly to check out an interesting-looking side canyon which was blocked by a dryfall that proved to be more difficult to climb than it appears:



"Waffle" rock:



Trying to get a glimpse up this side canyon beyond the impasse (which did not look easily bypassable):



The narrow section of this canyon, closer to Hole-in-the-Rock Road, was very reminiscent of the drive through Titus Canyon. Given that the Left Hand Collet Canyon Road was in excellent condition on this trip, I found it to be almost as enjoyable as a trip through Titus. The next five photos are of this narrow section:



Our final stop was at the Twenty-Mile Wash Dinosaur Track Site. Panorama from the track site:



The next seven photos are of the dino tracks; note on the second one the tail track can be seen also:



One final photo looking up towards Left Hand Collet Canyon:

