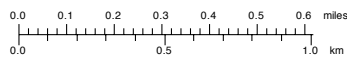
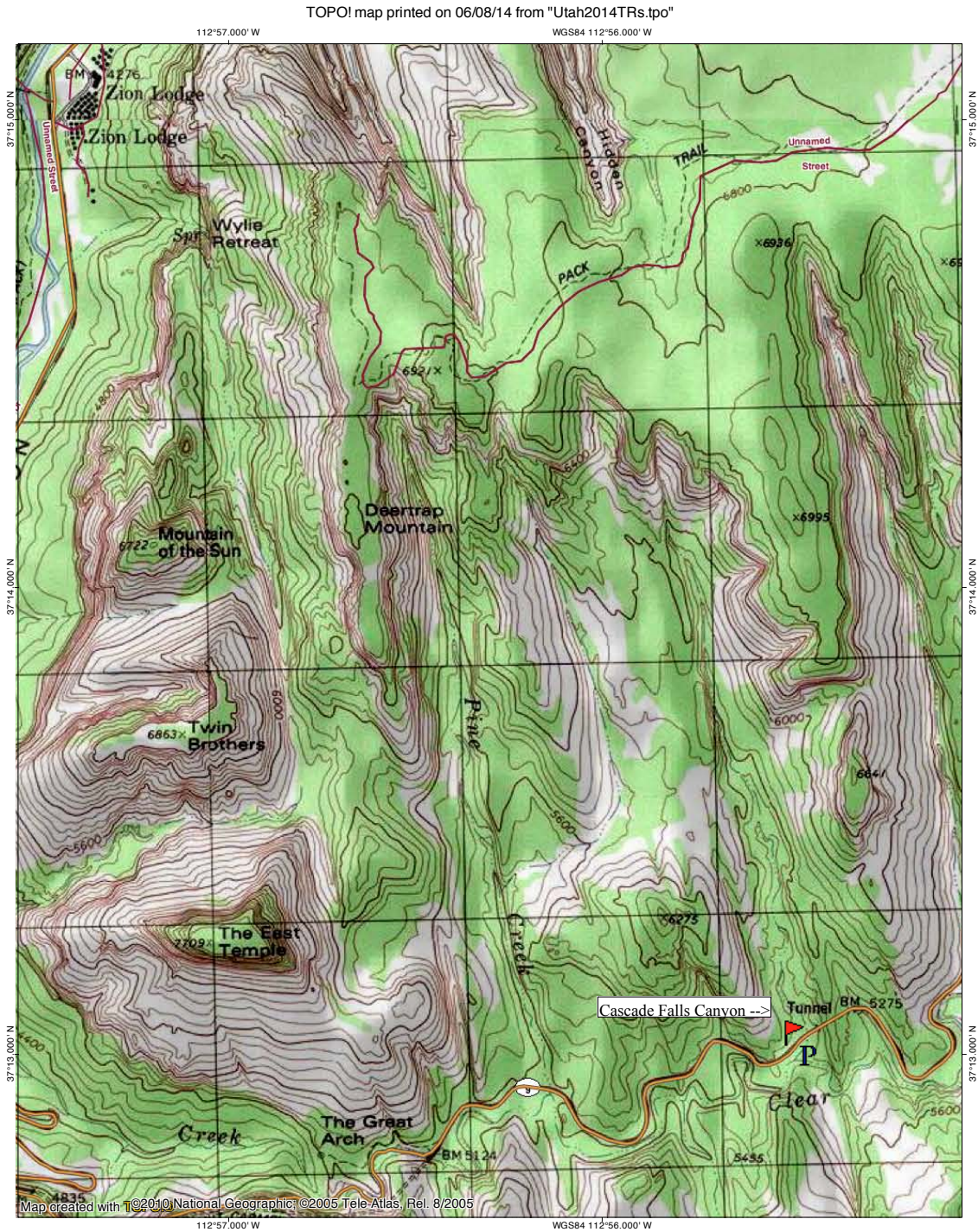


**CASCADE FALLS CANYON, ZION NATIONAL PARK, AND
ESCALANTE VIEWPOINT, GRAND STAIRCASE-ESCALANTE NATIONAL MONUMENT**

Cascade Falls Canyon is located on the east side of Zion National Park, beyond the Zion-Mt. Carmel Tunnel. Parking is located just before the smaller tunnel on this road from Zion to Mt. Carmel, when driving east.

TOPO map of Cascade Falls Canyon:



Looking towards the canyon from where we parked:



Looking down the main road at the amazing colorful rock formations which can always be seen in Zion National Park:



Nice flower we spotted on the way down to the canyon from the road:



View up-canyon after having dropped in from the road:



The next seven photos show our progress up-canyon:





A very nice blooming cactus on the wall of the canyon:



Looking back down-canyon:



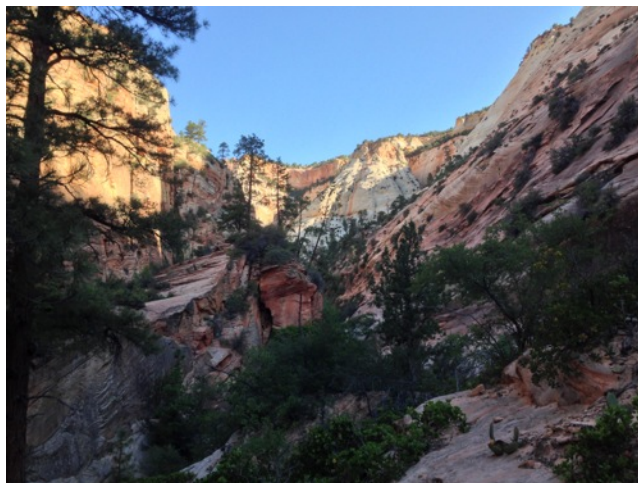
This looks like a very interesting valley to explore on a future trip, when the weather isn't quite so hot:



Further on, the canyon starts to enter taller and steeper cliffs:



The canyon appears to split, so we take the right fork, which appears more major; however, this turns out to be a mistake, as we encounter severe bushwhacking:



We attain the small ridge between the two apparent forks and look down into the canyon below and to the right:



Eventually, we are able to drop into this canyon. This is what we down-climbed to get into the canyon:



Looking down-canyon:



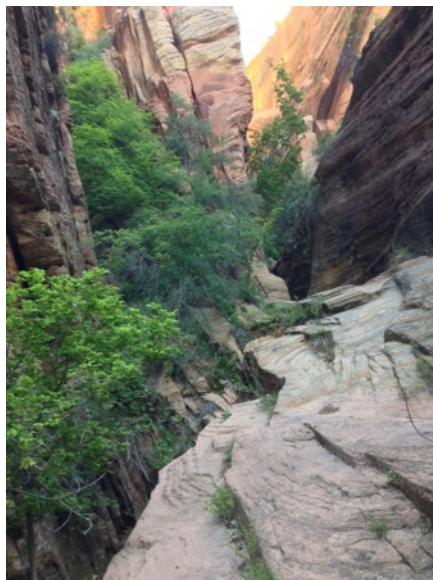
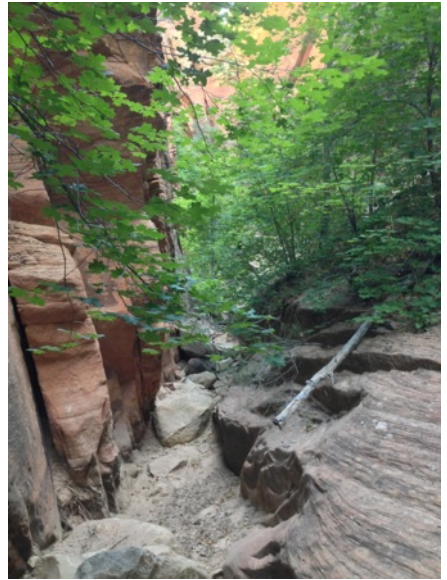
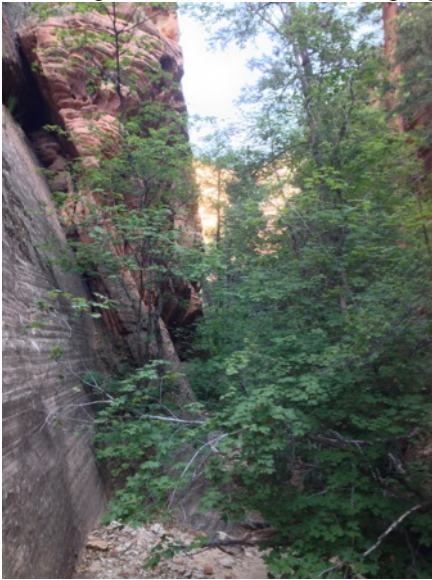
We decide to head up-canyon first and check out the down-canyon later. We end up not seeing the section of this canyon (which turns out to only be a side canyon) between the bushwhacking and where we dropped in, as once we reach the main canyon (the left fork) we stay in that. Looking up-canyon:



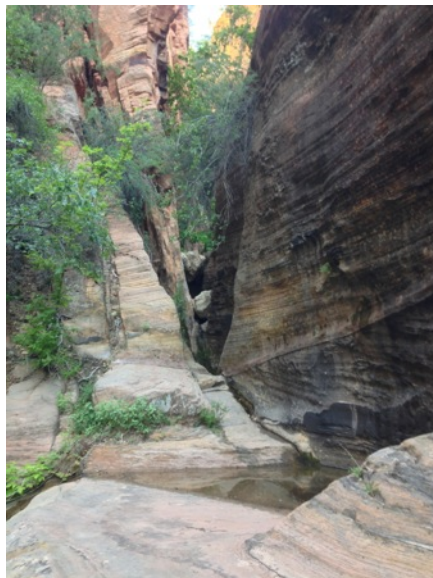
This upper part of the side canyon ends up also having a lot of overgrowth in it, but it does have some nice rock walls, and eventually we are able to rejoin what we now realize was the main canyon:



The next four photos show our continued progress up the main canyon:



All too soon, our progress is blocked by a boulder jam/fall. Had this been a dryfall in Death Valley, it would have been relatively simple to climb. However, due to the pool below the impasse and the water on the rock, we decided it would be too slippery and therefore unsafe to climb:



I scrambled up on a ledge to the left of the impasse to see if I could get a view around it; it appears that there either is some nice narrows, a large impasse, or both beyond this point:



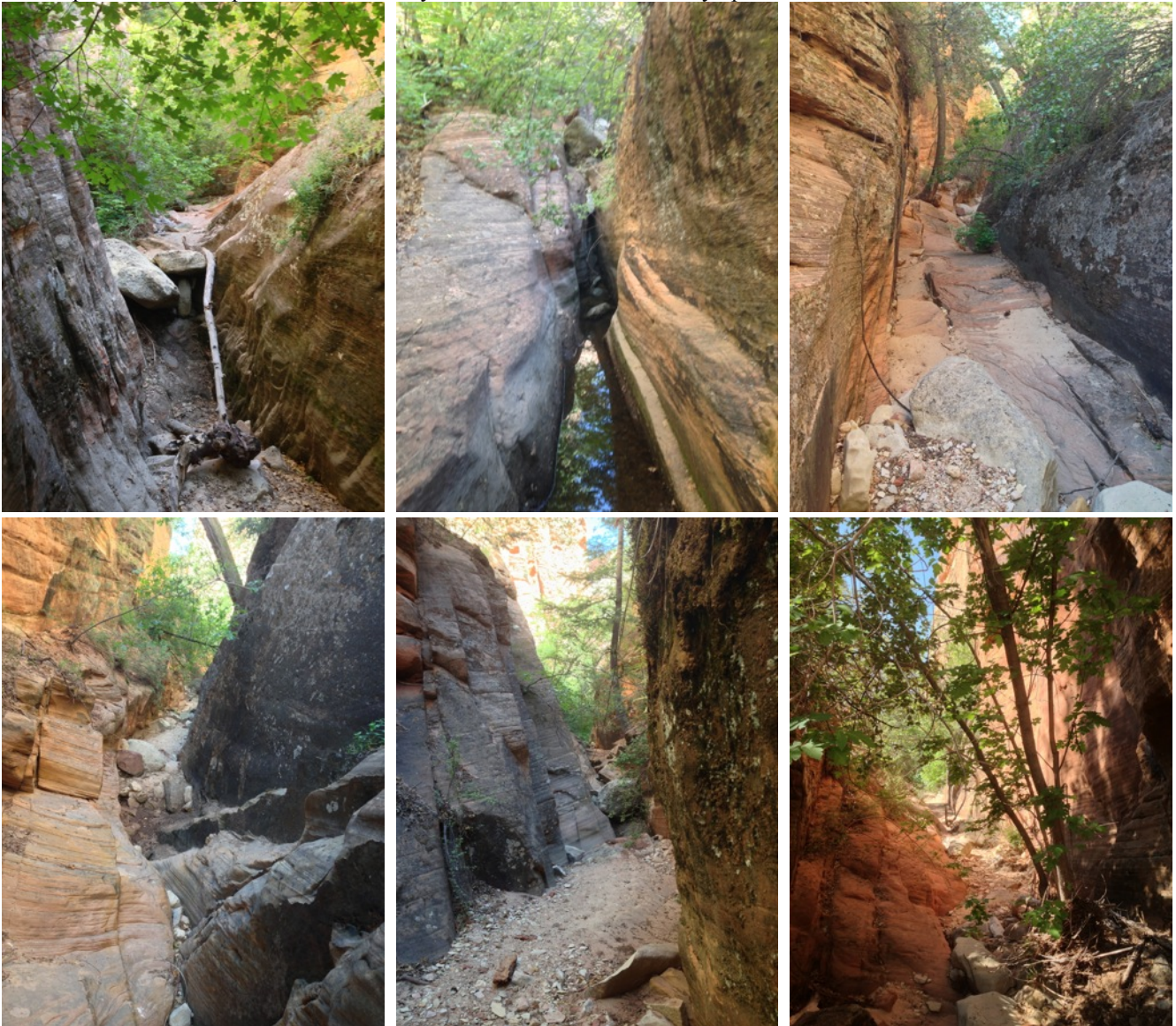
Another view of this impasse:



From here, we decided to head back down-canyon. This tree in the narrow section was quite impressive:



The next six photos show the part of the main canyon that we missed on our way up:



This photo shows the canyon split, where we had originally headed to the right when we should have gone to the left.



From here, we drove to Escalante and checked out a viewpoint which we had seen on our last visit to this area (from between mileposts 67 and 68 on UT 12, take road #107, then turn right on road #108):

