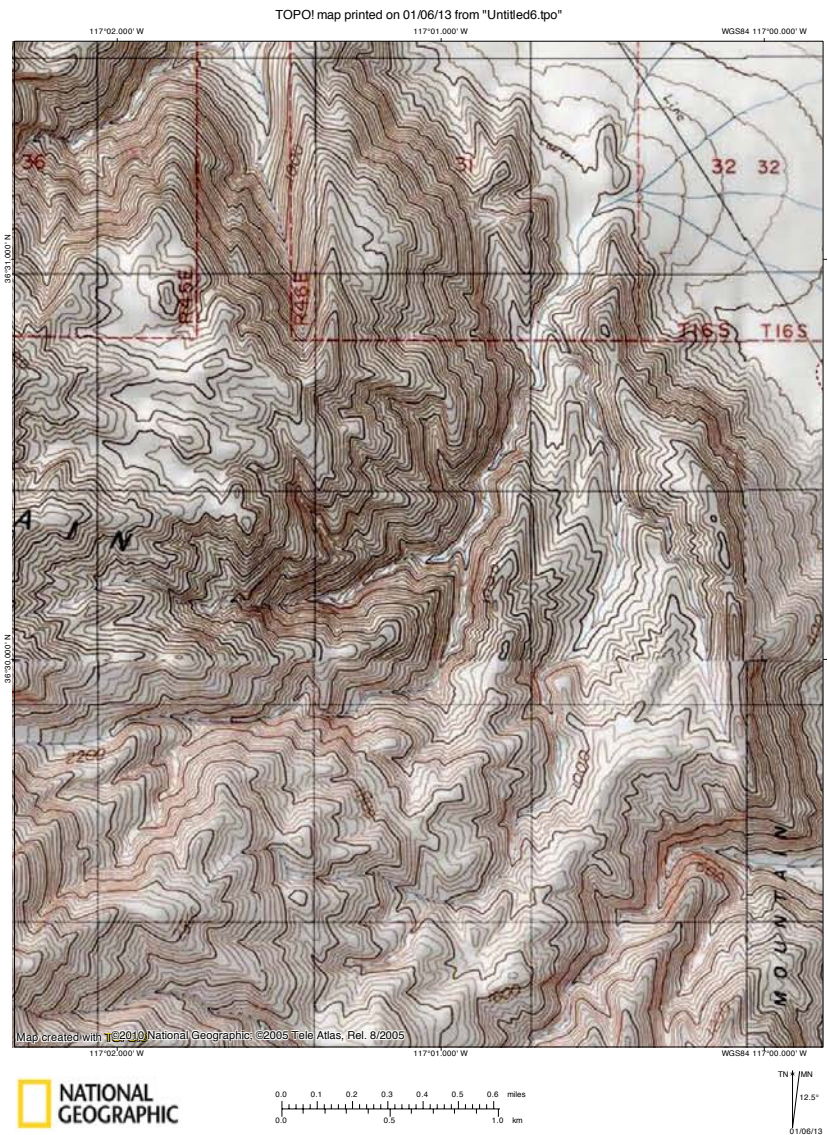
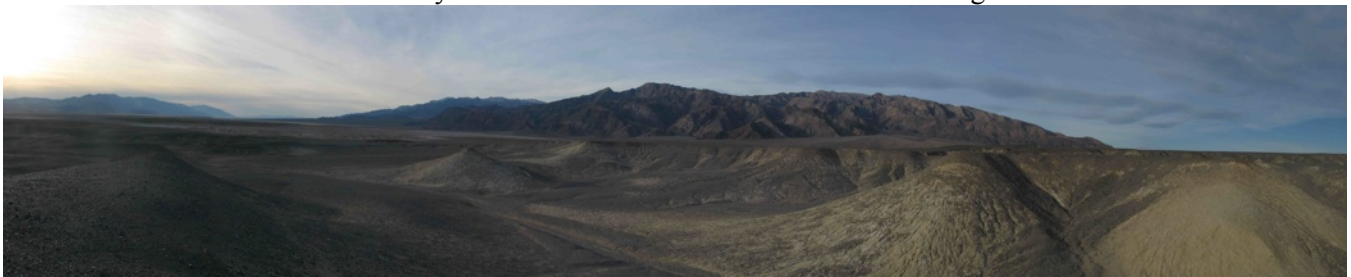


## “COTTONBALL MARSH” CANYON

TOPO map of this canyon:



To get to this canyon, we hiked around the southern base of the hills surrounding Salt Creek and followed the edge of the Cottonball Basin out to the canyon, picking up the old road in places. Looking towards Tucki Mountain and Cottonball Marsh Canyon from near the base of the hills surrounding Salt Creek:



The canyon appears much closer as we near where we leave the edge of the Cottonball Basin and head up the alluvial fan:



Looking along the transmission line:



We are now approaching where we drop into the canyon; on our way out to the canyon, we went to the north of the small bump in the wash, but we then had to drop down into the main canyon. On the way back we decided that it would be easier (and possibly faster, although longer) to follow the main wash out, as it goes south of this bump:



Looking down into the canyon from where we dropped in:



Looking out at the valley once in the wash:



Looking up-canyon from where we dropped into the wash:



Looking up the main side canyon to the east; we checked this out on the way back out the main canyon:



Up ahead the canyon makes a sharp turn to the right and enters some narrows:



The start of the narrows is a narrow passage:



The canyon opens up for a short time, then enters the more major narrows:



The canyon turns to the left, then opens up again:



Ahead you can see that the canyon cuts through a narrow and tall corridor/slit:



Up ahead the canyon makes another sharp turn to the left; up ahead you can see the start of the first workaround we tried:



Continuing up the canyon, we encounter the best narrows:



Then, we hit impasse; the dryfall is about 40-feet tall, maybe more:





First, we backtracked and ascended the northwest side of the canyon wall. This photo shows the view up-canyon, which looks like it has more impressive narrows (and probably more impasses):



Looking back towards the valley:



There is absolutely no workaround on this side, as the descent/ascent would likely be much more difficult than climbing the actual impasse itself; these photos were taken from a narrow ledge (which can be seen in a photo from the other side of the canyon later in this trip report). This photo shows a possible workaround on the other side of the canyon; however, as it looks incredibly steep, it might help to have a rope to use as a hand-line for the descent:



From here, we returned to the canyon, and one member of the group ascended the southeast side of the canyon to look for a workaround there. This photo shows this hiker up on the ridge above the canyon:



This photo of the ledge on the northwest side of the canyon where the previous photos were taken was taken from this second workaround attempt; you can see the ledge a little to right of the center of this photo:



Continuing back down the canyon, we checked out the side canyon. Because it has so many boulders early on, we headed back; however, we returned to this canyon later in the trip (see my Cottonball Marsh Side Canyon Trip Report) and continued farther:

