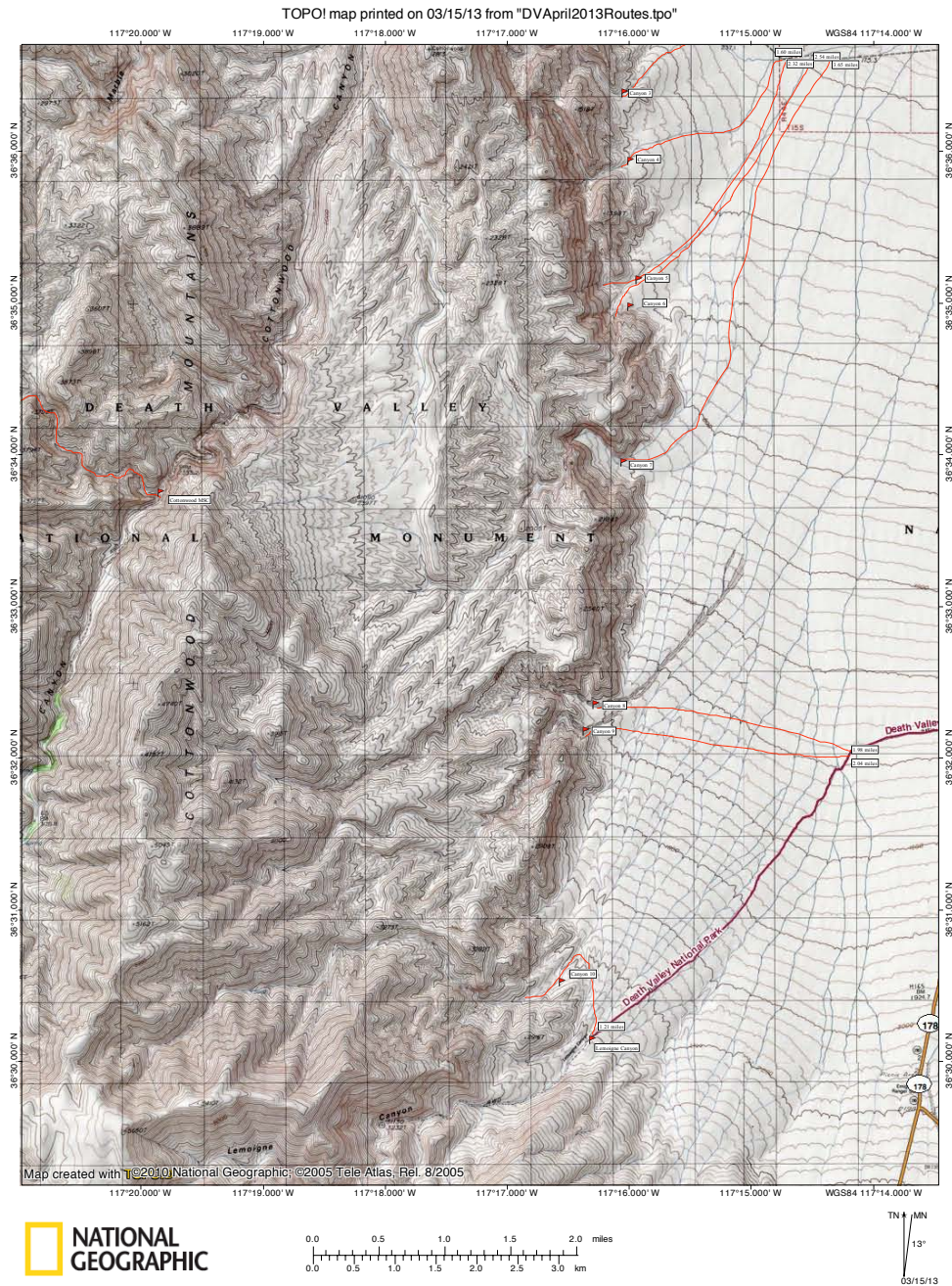
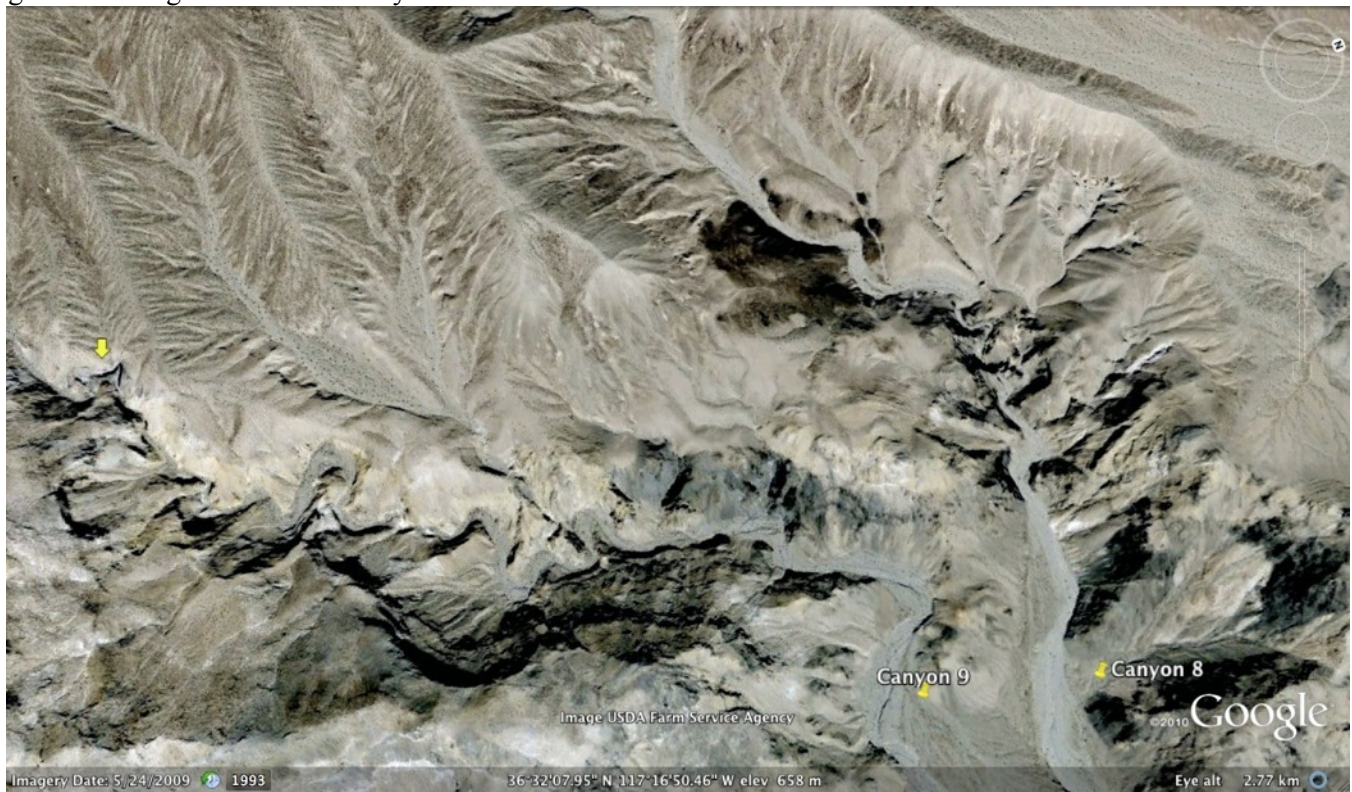


Canyons 8 and 9

TOPO map of these canyons:



Google Earth image of these two canyons:



As the Lemoigne Canyon road was not in good enough condition for us to drive it, we instead walked for about two miles on it until it started to bend towards the actual Lemoigne Canyon rather than be directed more towards the entrance to Canyons 8 and 9. Panorama from near where we parked next to where Lemoigne Canyon road leaves the main road:



Looking towards the Grapevine Mountains on our walk along the Lemoigne Canyon road:



Looking ahead towards Canyons 8 and 9 (to the right in the photo):



When the road turned away from our direct route to Canyons 8 and 9, we left the road and headed as straight as we could for the canyon entrance (since we needed to walk up and down over the bumpy alluvial fan) which was about three miles away, "as the drunken crow flies." Panorama of the somewhat nearer canyon entrance with the Grapevines to the right:



Looking up towards the entrance to Lemoigne Canyon:



Looking up towards the mouth of Canyons 8 and 9 as we finally reach the Canyon 9 wash:



We decided to check out Canyon 9 first, as it looked to go a longer distance than Canyon 8 from the maps and we wanted to make sure we had enough time to see all that we wanted to see in that canyon. The canyon looks quite promising as we turn a corner and enter the main part of the canyon:



The next two photos show our progress up the canyon:



Interesting hoodoo in the canyon:



The sun peeking over the ridge on the left side of the canyon gave some interesting rainbow effects in HDR photos taken with my iPhone:



The next two photos show our continued progress up this canyon; the canyon stayed somewhat narrow though did not pass through any genuinely narrow stretches until near the end of the hike:



Quartz on the walls of the canyon:



The only somewhat major impasse in the canyon before the narrows section is an 18-foot fall which is easy to climb and is also bypassable on the left:



Climbing up this easy dryfall:



Three more photos of this canyon before the main narrows section:





The entrance to the main section of narrows:



The next six photos show this incredible, but all too short, section of narrows:



Interesting hoodoos in this narrow section:



The impasse that blocks further progress in this canyon:



Small arch on the wall just before the impasse:



It is possible to bypass this impasse on the right side of the canyon, but only one member of the group checked it out, and neglected to bring a camera up there. The narrow section appears to end just above the dryfall, with a short distance of short-walled and moderately narrow canyon before the wash reaches the level of the surrounding hills. Therefore, we decided to head back and check out Canyon 8. Photo of the bypass route (it is also possible and likely easier to access the ridge from further down-canyon):



Looking towards Tucki Mountain from near the entrance to Canyon 8:



The entrance to Canyon 8:



The canyon appears to reach a narrow section up ahead, with a side canyon going off to the right:



A 12-foot impasse that was just too slippery to climb:



I scrambled up the right side above the impasse, but could not look up-canyon; view looking back out of Canyon 8 from here:



There is an easy bypass of this impasse by following the side canyon:



Attain the ridge between the side canyon and the main canyon just before the side canyon reaches this impasse:



There is a well-worn sheep trail that heads off to the right once you attain the saddle between the side canyon and the main canyon; if you cut directly across the hill rather than following the trail, it is much quicker, as you can drop into the canyon easily just above a boulder jam which is shortly past the first impasse:



Looking down at the canyon from here:



If you do follow the sheep trail, you can see into the short narrow section of this canyon:



Looking back out towards the valley from here:



The boulder jam which is the second impasse:



The section of the canyon between the two impasses, which are the only obstacles in this narrow section of this canyon:



The next four photos show progress up-canyon:





The canyon beyond the narrow section; as it was getting late, and the canyon appeared to be open like this for a while longer from the Google Earth image, we decided not to continue further in this canyon:



The entrance to the narrow section from the upper side of the canyon:



Looking out towards Tucki Mountain from the lower bypass:

