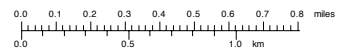
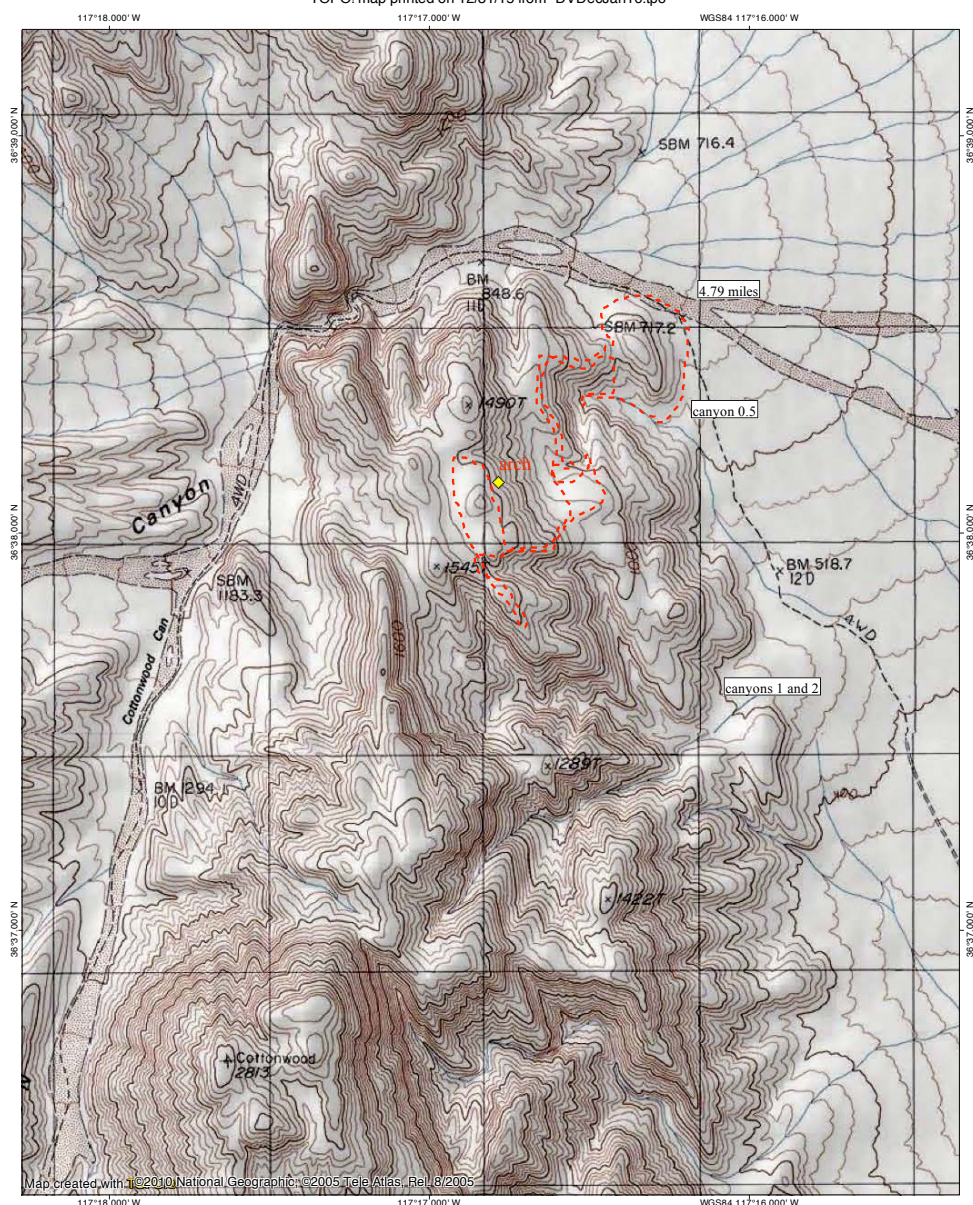


CANYON "ONE-HALF", COTTONWOOD ARCH, AND VIEW INTO UPPER CANYON ONE

TOPO map for this hike:

TOPOI map printed on 12/31/15 from "DVDecJan16.tpo"



Google Earth map for this hike:



We parked at the large parking area at the mouth of Cottonwood Canyon, and headed down towards the mouth of what I'm referring to as "Canyon 0.5":



We would later be hiking on the other side of this mound which is clearly visible from the parking area and forms the start of the ridge between Cottonwood Canyon and "Canyon 0.5":



We dropped into the canyon wash and began the walk up to the main part of the canyon:



The canyon wash soon forks, and we enter an unexpected section of narrows:



These narrows were surprisingly tall and narrow:



They continued for a short distance, around a bend in the canyon wash:



The canyon opened up briefly:



Then it narrowed down once more, before opening up again:



Around the corner and to the left you can see where the canyon enters the cliffs and almost certainly will encounter a dryfall:



The canyon starts to get really nice here:



Looking up at the ridge we would be hiking along later:



After going around another bend in the canyon, up ahead we can see the expected impasse:



Looking back out at the other side of the mound which we had been looking at from the parking area:



The impasse was more interesting than we'd expected to see:



The water comes down this chute, the entirety of which is probably a total of 50 feet tall, but the lower portion (seen here) is probably only about 12 feet tall:



After climbing the lowest portion of the fall, one encounters the next stage, about 6 or 7 feet tall with a chockstone at the top:



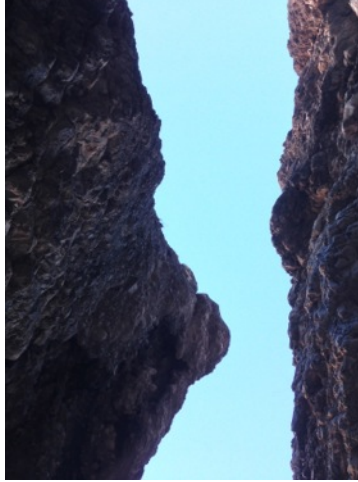
The third stage is a slanted dryfall and is only about 6 feet tall (I didn't get a photo of it), but the final part of the impasse is at least 25 feet tall and would be quite difficult to climb:



Looking out at the canyon from here; the point seen on the ridge in this photo is where some of the photos seen later in this report were taken:



Looking up from here to show how deep and narrow this part of the impasse is:



From here, we headed back down canyon to attain the ridge between this canyon and Cottonwood Canyon:



The ridge on the other side of this canyon appeared to be climbable as well, but this side looked easier:



We are now starting to get a view into the middle part of this "Canyon 0.5", above the impasse:



Looking across at the ridge we could have ascended, and the impasse far below:



Looking down at where the wash of "Canyon 0.5" meets the Cottonwood Canyon Road:



We continued up the ridge from here, with the plan to circle around to get to the top of this section of the canyon:



Looking back at where we have just come from, and out towards the Mesquite Sand Dunes:



From the highest point on this ridge we could see the Cottonwood Canyon mouth (far left):



It would probably be a bit easier to hike to what I'm calling "Cottonwood Arch" from somewhere in Cottonwood Canyon:



Looking across this flat area towards the middle section of Canyon 0.5:



View down into Canyon 0.5; we didn't have time to hike down here, as once we spotted the arch we chose to hike up to it instead:



Panorama of the cliffs above this flat area; the "tributaries" of Canyon 0.5 come down off this cliff, though the main canyon itself cuts through the deepest notch, seen to the right in this photo:



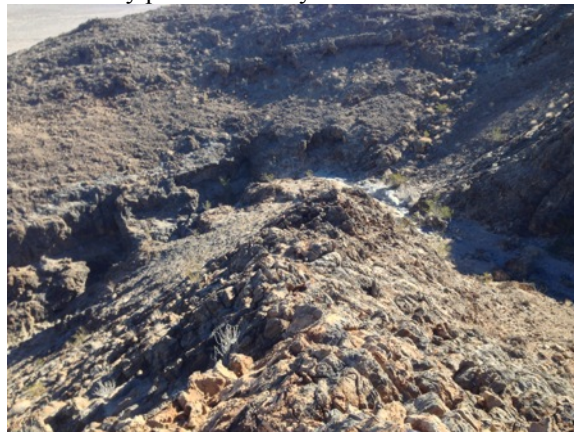
It was from here that we spotted the arch, high above us on the cliff. Note that there are only a few small stretches of the hike on which we could see the arch, just as there is only one small stretch of the Cottonwood Canyon Road from which the arch can be seen:



Another view looking down into Canyon 0.5:



The canyon makes a sharp bend here; this is the only part of the canyon we hiked down into:



Looking at where the canyon comes down from this flat area:



We circled around the canyon, then dropped in here to see a spot which wasn't viewable from the ridge:



We quickly encountered a dryfall, which was too tall to downclimb but appears to be bypassable; however, we chose instead to hike up to the arch:



Zooming in on the arch from back up on the lower ridge; it certainly looked to be an impressive arch from here:



Although not visible from earlier along the ridge, there is a notch in the cliff face that one can hike through (and a nice bighorn trail to follow that makes hiking a lot easier), rather than head straight for the arch:



Panorama looking into Canyon 1 (right fork) from this route up:



The hiking was surprisingly straightforward through here:



Upon reaching the top, we got a great view into the upper part of Canyon 1; and we were surprised at how flat the terrain was above the cliff:



This area can probably (?) be more easily reached from further up the Cottonwood Canyon Road, and is definitely worth more exploration:



We then followed the top of the cliff for a short distance to reach the arch, which is about 20 feet tall in my estimation, and (in my opinion) more impressive from below:



Panorama of the valley from here:



Notice how Canyon 0.5 makes a big U-turn below us; it comes down from the ridge to our left, and we would check out its upper reaches shortly:



But first, we walked through the arch, noting how steep the terrain is through here:



Looking over at the arch from the cliffs beside it:



It would be very steep to try to hike up to the arch from below:

