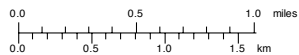
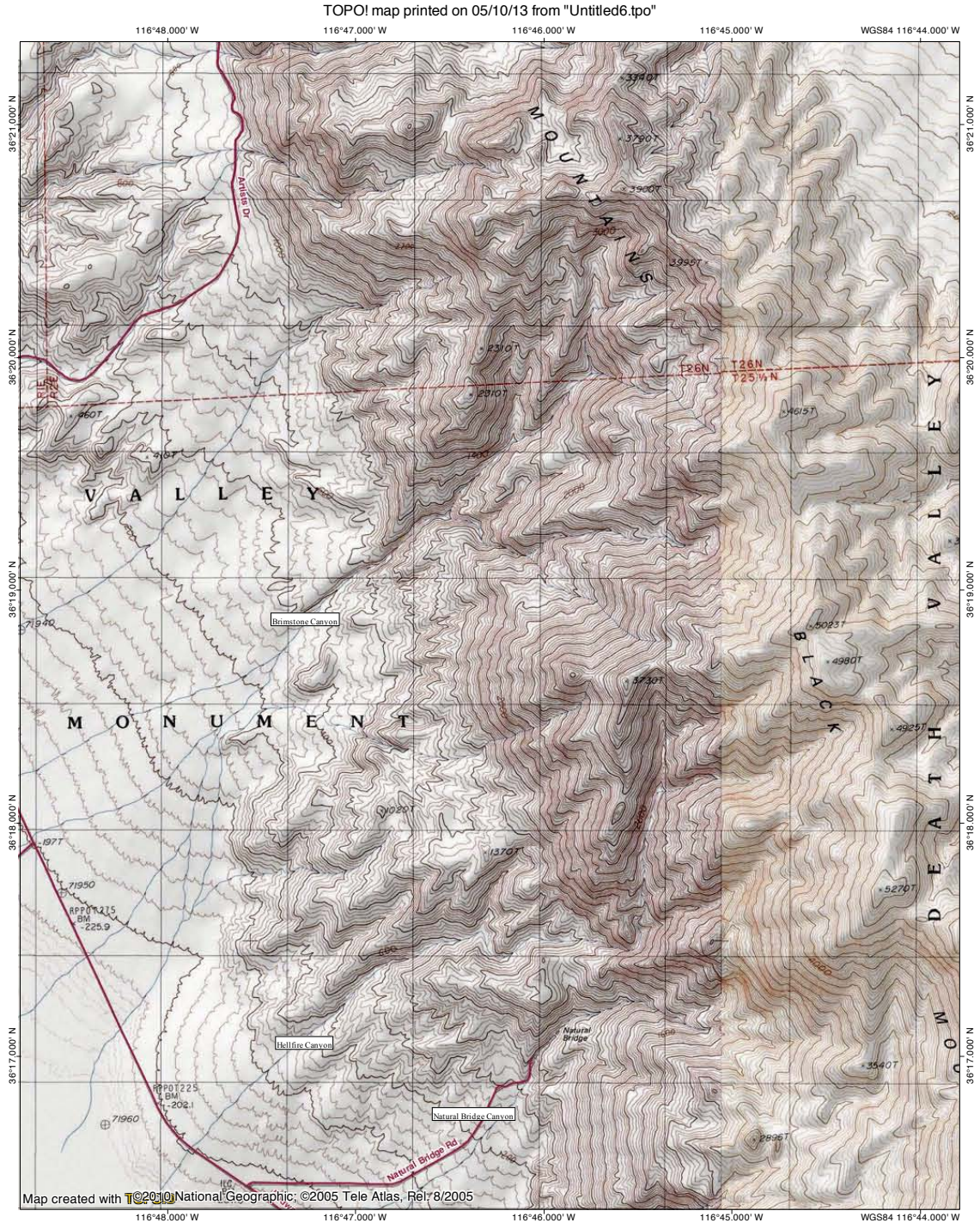


BRIMSTONE CANYON

Brimstone Canyon is the canyon two washes north of Natural Bridge Canyon, with Hellfire Canyon the canyon in between. This canyon appears to be popular with canyoneers, as are many canyons in this area; however, the lower portion of this canyon, as far as is accessible by hikers, is a very nice place to check out for a short day-hike.

TOPO map of this canyon:



TN + MN
12.5°
05/10/13

The mouth of Brimstone Canyon is shown by an arrow:



Looking towards the Panamint Mountains after having just explored the first set of narrows. There were a few easy (around 6 feet, slanted) falls to be climbed in the narrows:



The canyon looks very interesting as we continue; very soon after we went around the corner shown in this picture, we reached a fork, and we chose to explore the left fork first:



Looking back down canyon as the canyon starts to get narrow, near where the canyon forks:



This is a typical fall in the north fork of Brimstone Canyon—very easy, and so short that it can barely be called a fall:



Interesting cracked mud in this canyon:



After a few more turns and a few more short falls, we reached the impasse that stopped our progress in the left fork—a 15 foot wedge-shaped chute that we decided not to attempt to climb—so we decided to explore the right fork.



This picture was taken looking back after we had rounded a corner on the left fork, just past where the right and left forks of the canyon split:



This is the end (for us) of the right fork—a fall that is almost 200 feet in height:



Looking towards Telescope Peak on our way back out of Brimstone Canyon:

