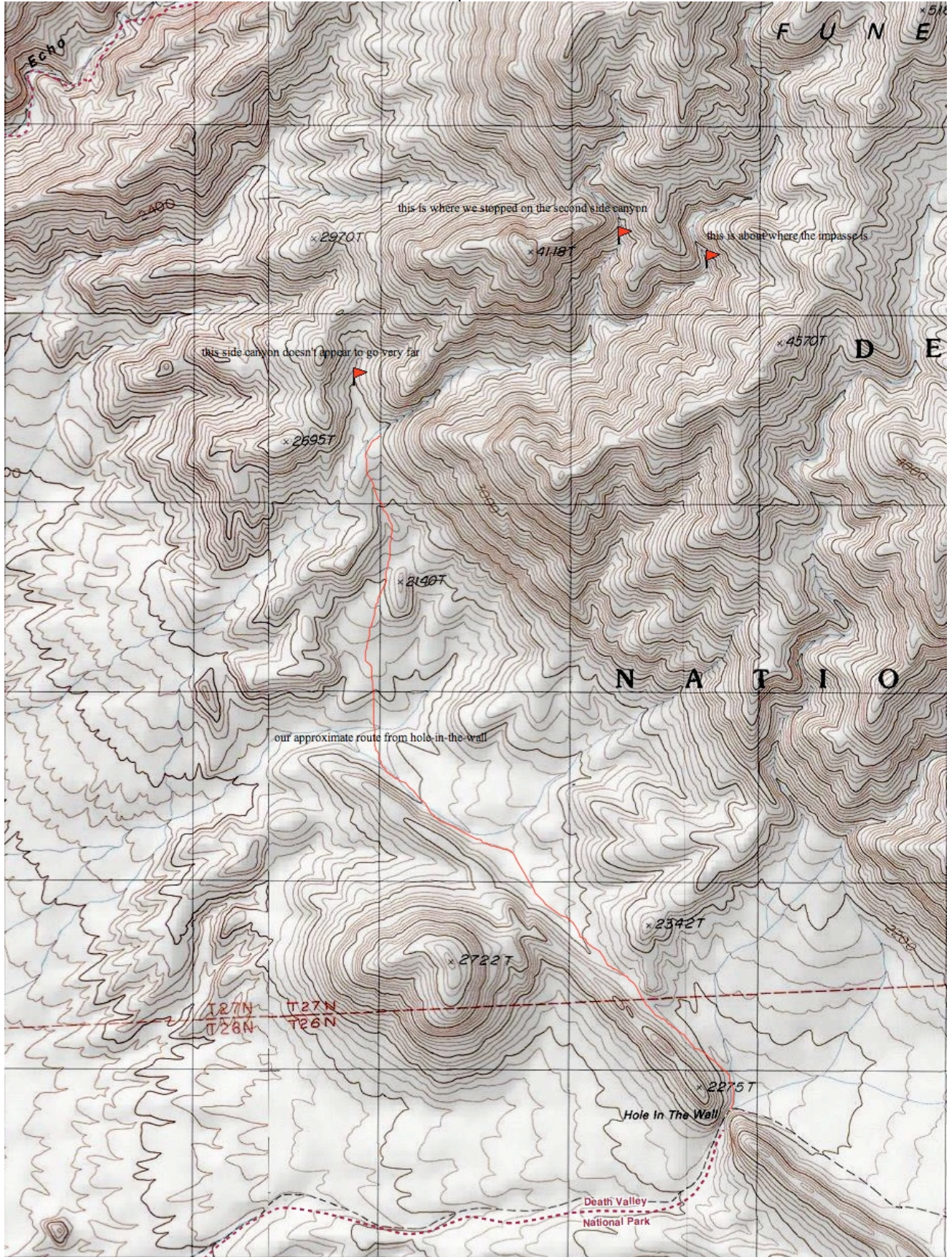


The Canyon Between Echo and Slit

TOPO map for this hike:





alluvial fan of
canyon between
Echo and Slit ↓

The beginning of the main alluvial fan for this canyon:



Approaching the canyon mouth:



The wash continues on to the left, but it appears from GoogleEarth and TOPO that this side canyon does not go very far:



The canyon starts out somewhat narrow, with short walls, but it opens up more after a few turns:



This is the typical view of the canyon for quite a while; as we hiked this canyon in January 2011, there was quite a bit of snow in the canyon for Death Valley:



Continuing up-canyon, we encounter the fork and take the right, more major, fork first:



Soon after the fork, we encounter the major obstacle:



The first part of the boulder jam is easy to scramble over, but we were unable to climb over the last part, which is over 15 feet tall, nor were we able to find any sort of bypass:



We headed back down-canyon and checked out the side canyon we had just passed:



The side canyon quickly gets steep and boulder-choked:



Continuing up the side canyon, it gets a little narrower but even steeper, so from here we turn around and head back to Hole-in-the-Wall:

