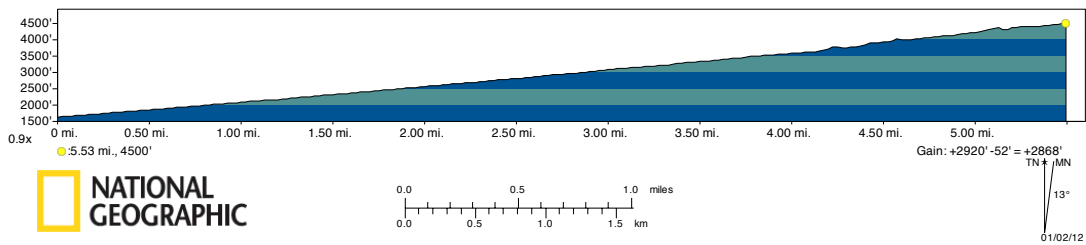
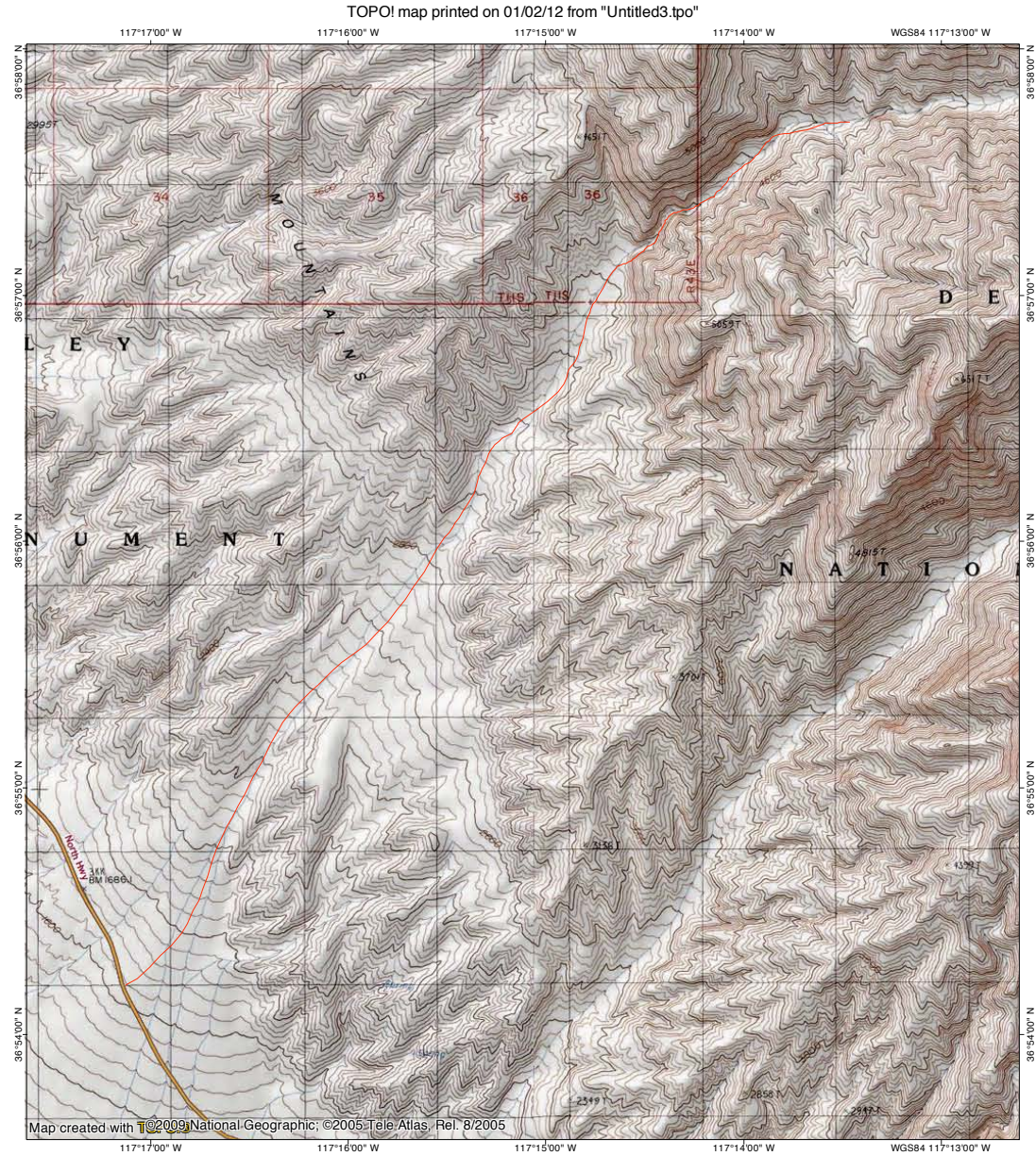


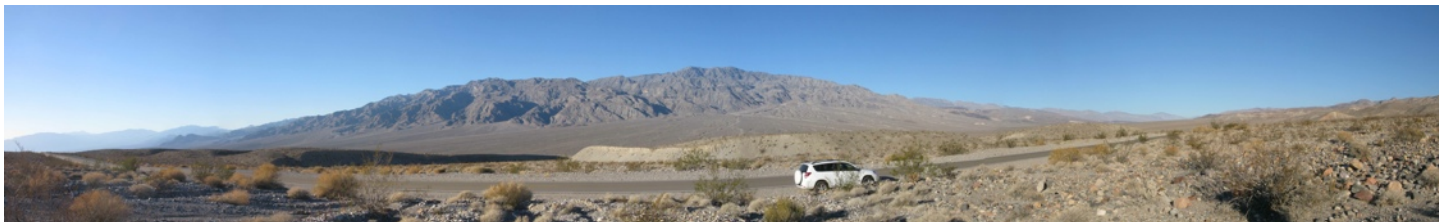
BACKTHRUST ("NORTH MOONLIGHT") CANYON

This canyon is the canyon one wash north of Moonlight Canyon, in the Grapevine Mountains; because of its location, it is often called North Moonlight Canyon, but the correct name is Backthrust Canyon because of a geological feature that exists in the canyon.

Topographical map of the canyon:



Panorama photograph looking towards Tin Mountain from where we parked for this hike:



Looking up towards the canyon “mouth” from where we dropped into the wash. We parked a little to the north of where the wash meets the road because it is a shorter distance to the higher-walled portion of the wash, as well as having firmer ground for easier walking (not a loose, gravelly wash). I’m calling the point in the hike after we leave the wash with mud walls and enter the part of the canyon with rock walls the mouth of the canyon:



Getting closer to the canyon mouth:



Now we are about to enter what I'm calling the canyon mouth:



The next four photos show the narrows part of the canyon. As can be seen from TOPO maps and Google Earth, the canyon after this is a wide wash. The narrow section of the canyon was very interesting; however, I think that other canyons in this area have better, deeper, narrower, and longer narrows:







As we are leaving the narrows, the canyon begins to open up more:



After another bend in the canyon, we leave the narrows completely and enter the wider wash that is the rest of the canyon:



An interesting side canyon that cuts off from the main canyon near where we turned around:



Looking up canyon at the point where we turned around; because of the long hike to get here and the relatively short November day, it would be close to dark by the time we returned to the car:



The next two photos show Joshua Trees on the south wall of the canyon:





One of the members of our group climbed up to the ridge in the north side of the wash after we left the canyon “mouth” and found these interesting wind-carved caves:



Picture of the wind caves (at top of picture) taken from the canyon wash:

