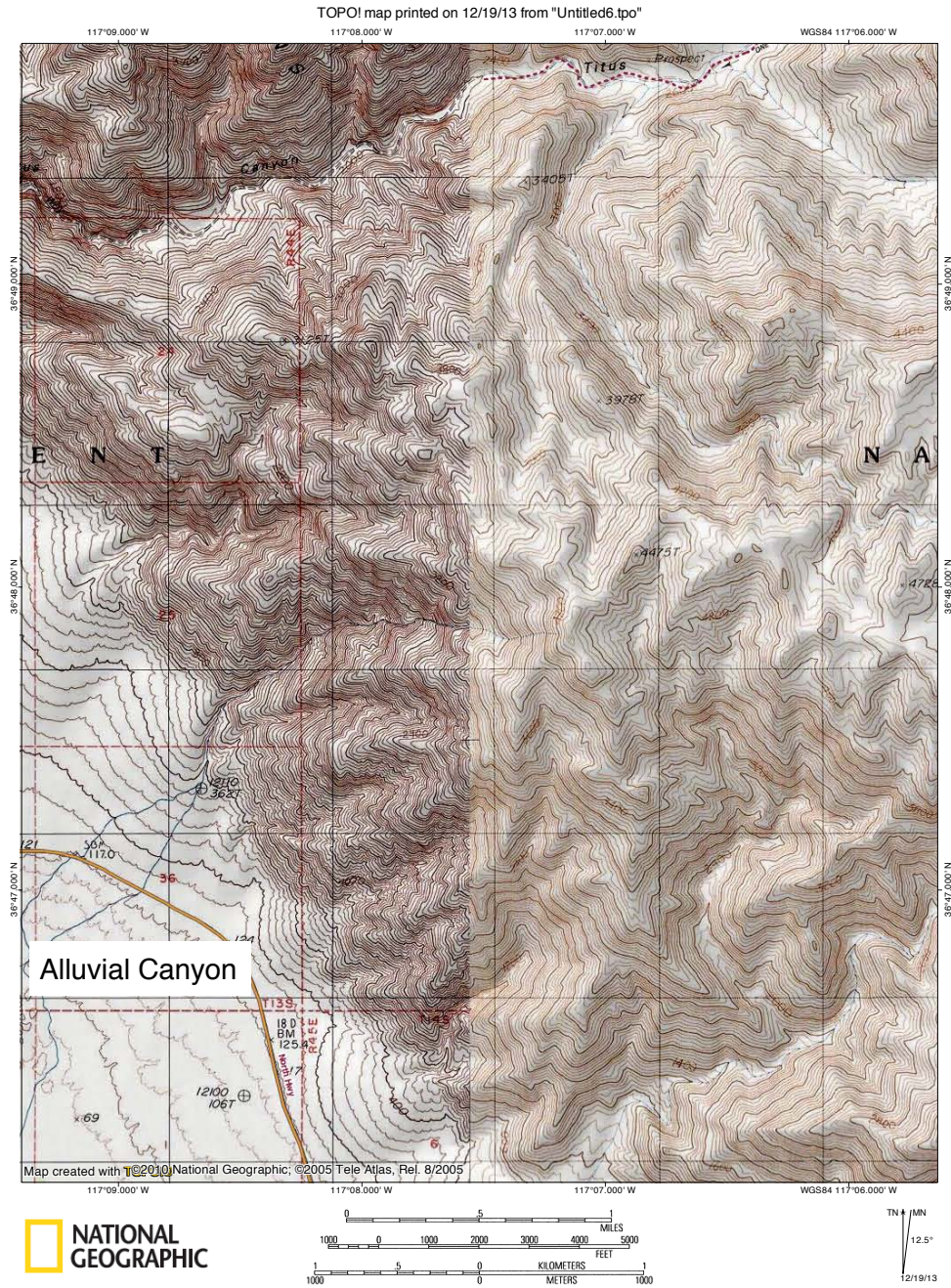


Alluvial Canyon and the Canyon Just Below Titus Canyon

TOPO map of Alluvial Canyon; note that this is the canyon marked by the alluvial fan informative sign on the Scotty's Castle Road:



Google Earth map of Alluvial Canyon:



Looking up at this canyon from the road; the alluvial fan is quite steep; however, it is not as difficult to climb as it appears, especially if you choose a good route:



The next two photos show progress up this alluvial fan:



The canyon above the steep fan:



Looking out at the valley from here:



This canyon is surprisingly passable by hikers as it is one giant (but easily climbable) boulder pile. The next nineteen photos show our progress up this canyon:









At this point the canyon rounds a bend and we lose sight of the valley. Note how much higher up we are here than in the original photo of the valley from the top of the alluvial fan. We estimated that the height of the fan was about a quarter of the distance we climbed in total:



Around the corner, the canyon appears to hit a wall, but it instead goes around a corner to the right and gets even steeper:



Three more photos of progress up this canyon:



Finally, we reach the great impasse; beyond this small dry-fall is a fall (seen in the background in this photo) that is definitely way too tall for us to climb:



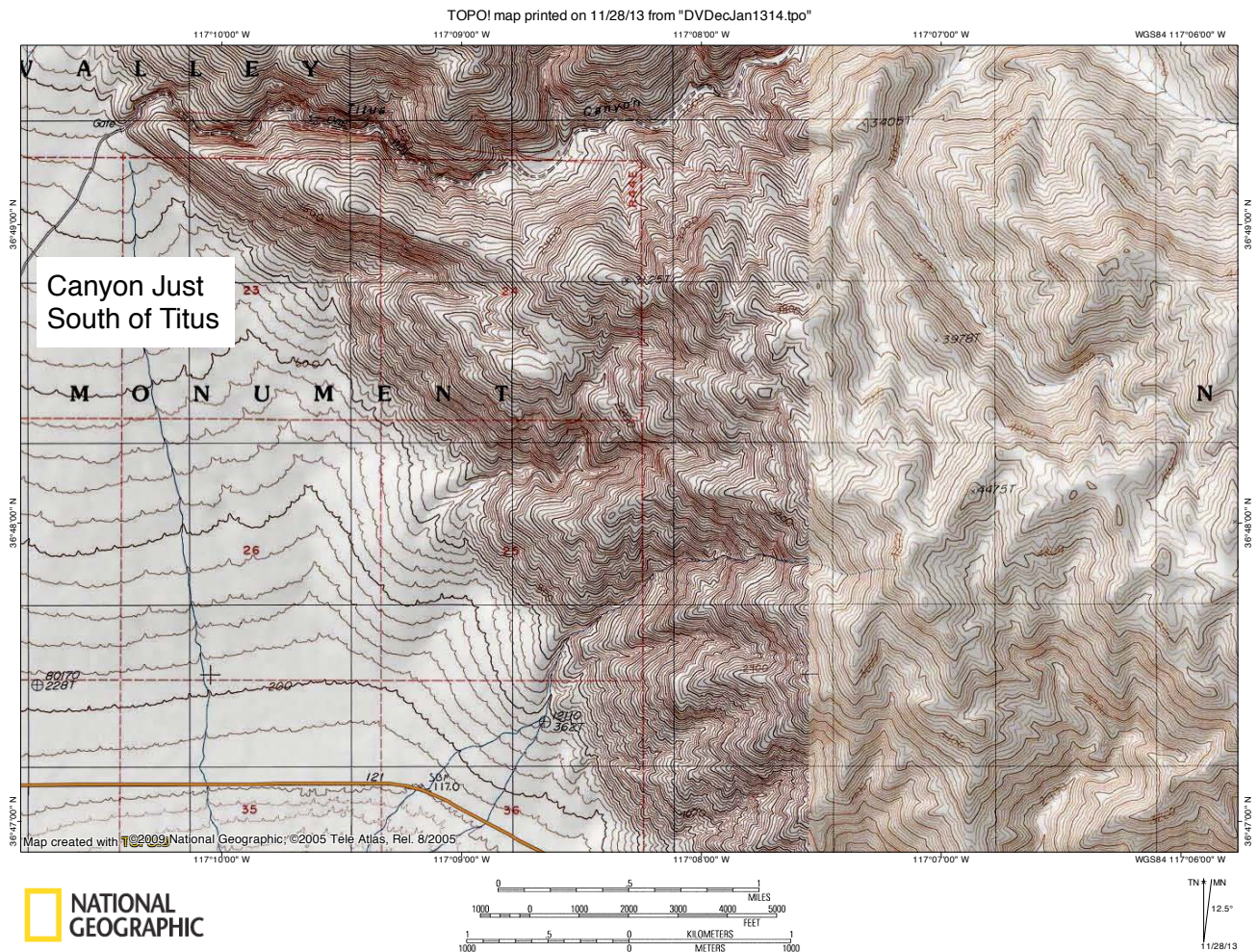
Looking back at where we went from the road; the arrow shows where we got to (note the lighter-colored rock is the great impasse):



Close-up photo of the great impasse from the road:



TOPO map of the canyon just below Titus:



Google Earth map of this canyon:



We parked at the mouth of Titus Canyon, as it would be shorter than walking from the main road, and headed south towards this canyon. The canyon mouth can be seen to the left in this picture:



As predicted by the maps, the canyon immediately encounters a non-climbable and non-bypassable impasse:



The best view up-canyon we could get:

